


Product datasheet

Anti-ATG9B antibody ab117591

★★★★★ [4 Abreviews](#) [4 References](#) [2 Images](#)

Overview

Product name	Anti-ATG9B antibody
Description	Rabbit polyclonal to ATG9B
Host species	Rabbit
Tested applications	Suitable for: IHC-P
Species reactivity	Reacts with: Human Predicted to work with: Mouse, Rat 
Immunogen	Synthetic peptide conjugated to KLH from the C-terminus of Human ATG9B
Positive control	Human placenta tissue, Human spleen tissue
General notes	<p>The Life Science industry has been in the grips of a reproducibility crisis for a number of years. Abcam is leading the way in addressing this with our range of recombinant monoclonal antibodies and knockout edited cell lines for gold-standard validation. Please check that this product meets your needs before purchasing.</p> <p>If you have any questions, special requirements or concerns, please send us an inquiry and/or contact our Support team ahead of purchase. Recommended alternatives for this product can be found below, along with publications, customer reviews and Q&As</p>

Properties

Form	Liquid
Storage instructions	Shipped at 4°C. Store at +4°C short term (1-2 weeks). Store at -20°C or -80°C. Avoid freeze / thaw cycle.
Storage buffer	pH: 7.4 Preservative: 0.02% Sodium azide Constituent: 99% PBS
Purity	Immunogen affinity purified
Clonality	Polyclonal
Isotype	IgG

Applications

The Abpromise guarantee

Our **Abpromise guarantee** covers the use of ab117591 in the following tested applications.

The application notes include recommended starting dilutions; optimal dilutions/concentrations should be determined by the end user.

Application	Abreviews	Notes
IHC-P		Use a concentration of 5 µg/ml.

Target

Function

Involved in autophagy and cytoplasm to vacuole transport (Cvt) vesicle formation. Plays a key role in the organization of the preautophagosomal structure/phagophore assembly site (PAS), the nucleating site for formation of the sequestering vesicle.

Tissue specificity

Highly expressed in placenta (trophoblast cells) and pituitary gland. Not expressed in vascular endothelial.

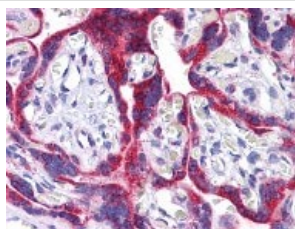
Sequence similarities

Belongs to the ATG9 family.

Cellular localization

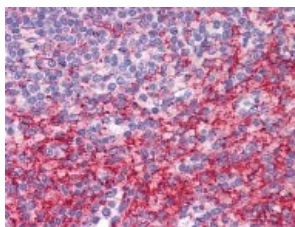
Cytoplasmic vesicle, autophagosome membrane. Under amino acid starvation or rapamycin treatment, redistributes from a juxtanuclear clustered pool to a dispersed peripheral cytosolic pool. The starvation-induced redistribution depends on ULK1 and ATG13.

Images



Immunohistochemistry (Formalin/PFA-fixed paraffin-embedded sections) - Anti-ATG9B antibody (ab117591)

Formalin fixed, paraffin embedded Human placenta tissue labelled with ab117591 at 5 µg/ml



Immunohistochemistry (Formalin/PFA-fixed paraffin-embedded sections) - Anti-ATG9B antibody (ab117591)

Formalin fixed, paraffin embedded Human spleen tissue labelled with ab117591 at 5 µg/ml

Please note: All products are "FOR RESEARCH USE ONLY. NOT FOR USE IN DIAGNOSTIC PROCEDURES"

Our Abpromise to you: Quality guaranteed and expert technical support

- Replacement or refund for products not performing as stated on the datasheet
- Valid for 12 months from date of delivery
- Response to your inquiry within 24 hours

- We provide support in Chinese, English, French, German, Japanese and Spanish
- Extensive multi-media technical resources to help you
- We investigate all quality concerns to ensure our products perform to the highest standards

If the product does not perform as described on this datasheet, we will offer a refund or replacement. For full details of the Abpromise, please visit <https://www.abcam.com/abpromise> or contact our technical team.

Terms and conditions

- Guarantee only valid for products bought direct from Abcam or one of our authorized distributors