


Product datasheet

Anti-ATOX1 antibody ab176993

[2 Images](#)

Overview

| | |
|----------------------------|---|
| Product name | Anti-ATOX1 antibody |
| Description | Rabbit polyclonal to ATOX1 |
| Host species | Rabbit |
| Tested applications | Suitable for: IHC-P, WB |
| Species reactivity | Reacts with: Human Predicted to work with: Mouse, Rat  |
| Immunogen | Recombinant full length protein corresponding to Human ATOX1 aa 2-68. (BC112248) Sequence: PKHEFSVDM TCGGCAEAVS RVLNKLGGVK YDIDLPNKKV CIESEHSMDT LLATLKKTGK TVSYLGLE Database link: O00244 Run BLAST with Run BLAST with |
| Positive control | 7721 and jurkat cell lysate. Liver cancer tissue. |
| General notes | <p>The Life Science industry has been in the grips of a reproducibility crisis for a number of years. Abcam is leading the way in addressing this with our range of recombinant monoclonal antibodies and knockout edited cell lines for gold-standard validation. Please check that this product meets your needs before purchasing.</p> <p>If you have any questions, special requirements or concerns, please send us an inquiry and/or contact our Support team ahead of purchase. Recommended alternatives for this product can be found below, along with publications, customer reviews and Q&As</p> |

Properties

| | |
|-----------------------------|---|
| Form | Lyophilized:200 ul sterile water |
| Storage instructions | Shipped at 4°C. Store at +4°C short term (1-2 weeks). Upon delivery aliquot. Store at -20°C long term. Avoid freeze / thaw cycle. |
| Storage buffer | pH: 7.20 Preservative: 0.02% Sodium azide Constituents: 98% PBS, 1% BSA |
| Purity | Immunogen affinity purified |

| | |
|------------------|------------|
| Clonality | Polyclonal |
| Isotype | IgG |

Applications

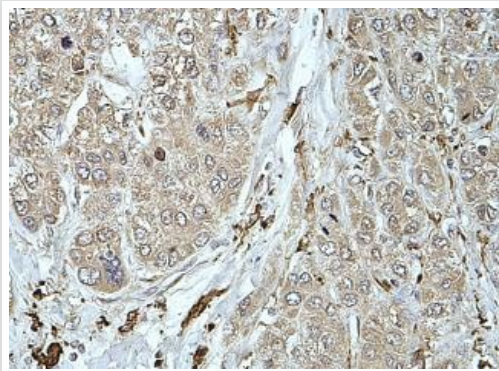
The Abpromise guarantee Our **Abpromise guarantee** covers the use of ab176993 in the following tested applications. The application notes include recommended starting dilutions; optimal dilutions/concentrations should be determined by the end user.

| Application | Abreviews | Notes |
|-------------|-----------|--|
| IHC-P | | 1/100 - 1/500. |
| WB | | 1/200 - 1/1000. Predicted molecular weight: 7 kDa. |

Target

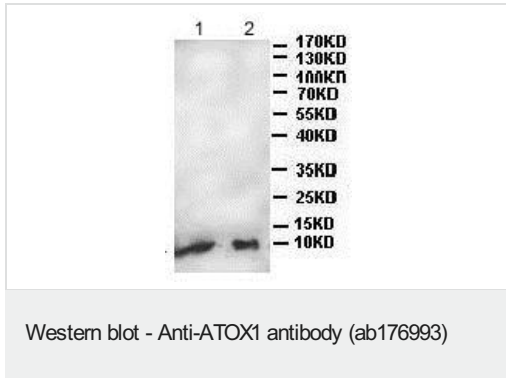
| | |
|------------------------------|--|
| Function | Could bind and deliver cytosolic copper to the copper ATPase proteins. May be important in cellular antioxidant defense. |
| Tissue specificity | Ubiquitous. |
| Sequence similarities | Belongs to the ATX1 family. Contains 1 HMA domain. |

Images



Immunohistochemical staining of formalin-fixed paraffin-embedded Human liver carcinoma tissue labeling ATOX1 with ab176993 at 1/100 dilution showing cytoplasmic staining

Immunohistochemistry (Formalin/PFA-fixed paraffin-embedded sections) - Anti-ATOX1 antibody (ab176993)



All lanes : Anti-ATOX1 antibody (ab176993) at 1/500 dilution

Lane 1 : 7721 cell lysate

Lane 2 : Jurkat cell lysate

Predicted band size: 7 kDa

Please note: All products are "FOR RESEARCH USE ONLY. NOT FOR USE IN DIAGNOSTIC PROCEDURES"

Our Abpromise to you: Quality guaranteed and expert technical support

- Replacement or refund for products not performing as stated on the datasheet
- Valid for 12 months from date of delivery
- Response to your inquiry within 24 hours
- We provide support in Chinese, English, French, German, Japanese and Spanish
- Extensive multi-media technical resources to help you
- We investigate all quality concerns to ensure our products perform to the highest standards

If the product does not perform as described on this datasheet, we will offer a refund or replacement. For full details of the Abpromise, please visit <https://www.abcam.com/abpromise> or contact our technical team.

Terms and conditions

- Guarantee only valid for products bought direct from Abcam or one of our authorized distributors