


### Anti-ATP1B1 antibody [464.8] ab8344

★★★★★ 1 Abreviews 12 References 2 Images

#### Overview

Product name	Anti-ATP1B1 antibody [464.8]
Description	Mouse monoclonal [464.8] to ATP1B1
Host species	Mouse
Tested applications	<b>Suitable for:</b> WB, Flow Cyt (Intra)
Species reactivity	<b>Reacts with:</b> Human <b>Predicted to work with:</b> Rat, Cow, Dog, Pig 
Immunogen	Full length native protein (purified). This information is proprietary to Abcam and/or its suppliers.
Positive control	WB: Human kidney tissue lysates Flow Cyt (Intra): HepG2 cells.
General notes	<p>This antibody clone is manufactured by Abcam. If you require a custom buffer formulation or conjugation for your experiments, please contact <a href="mailto:orders@abcam.com">orders@abcam.com</a>.</p> <p>The Life Science industry has been in the grips of a reproducibility crisis for a number of years. Abcam is leading the way in addressing this with our range of recombinant monoclonal antibodies and knockout edited cell lines for gold-standard validation. Please check that this product meets your needs before purchasing.</p> <p>If you have any questions, special requirements or concerns, please send us an inquiry and/or contact our Support team ahead of purchase. Recommended alternatives for this product can be found below, along with publications, customer reviews and Q&amp;As</p>

#### Properties

Form	Liquid
Storage instructions	Shipped at 4°C. Upon delivery aliquot. Store at -20°C or -80°C. Avoid freeze / thaw cycle.
Storage buffer	pH: 7.40 Preservative: 0.02% Sodium azide Constituent: PBS  Contains 0.4M arginine
Purity	Protein G purified
Clonality	Monoclonal
Clone number	464.8

<b>Isotype</b>	IgG2a
<b>Light chain type</b>	kappa

## Applications

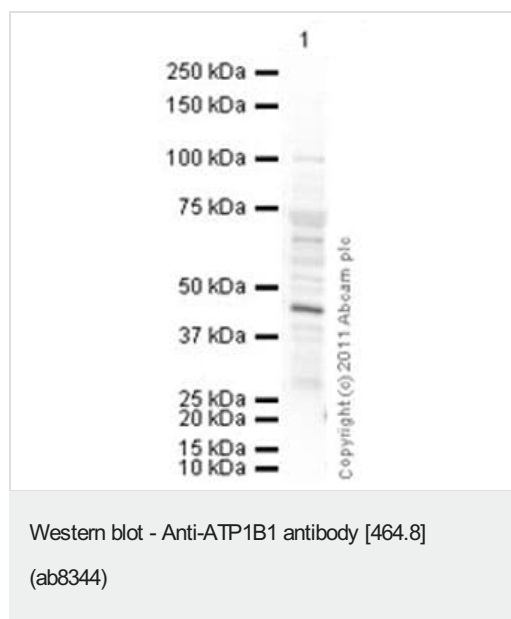
**The Abpromise guarantee** Our **Abpromise guarantee** covers the use of ab8344 in the following tested applications. The application notes include recommended starting dilutions; optimal dilutions/concentrations should be determined by the end user.

Application	Abreviews	Notes
<b>WB</b>	★★★★★ (1)	1/500. Detects a band of approximately 45 kDa (predicted molecular weight: 35 kDa).
<b>Flow Cyt (Intra)</b>		Use 1µg for 10 <sup>6</sup> cells. <b>ab170191</b> - Mouse monoclonal IgG2a, is suitable for use as an isotype control with this antibody.

## Target

<b>Function</b>	This is the non-catalytic component of the active enzyme, which catalyzes the hydrolysis of ATP coupled with the exchange of Na(+) and K(+) ions across the plasma membrane. The beta subunit regulates, through assembly of alpha/beta heterodimers, the number of sodium pumps transported to the plasma membrane.
<b>Tissue specificity</b>	Found in most tissues.
<b>Sequence similarities</b>	Belongs to the X(+)/potassium ATPases subunit beta family.
<b>Cellular localization</b>	Membrane.

## Images



Anti-ATP1B1 antibody [464.8] (ab8344) at 1/500 dilution + Human kidney tissue lysate - total protein (**ab30203**) at 20 µg

### Secondary

Granzyme B overexpression 293T lysate (whole cell) (**ab94040**) at 1/10000 dilution

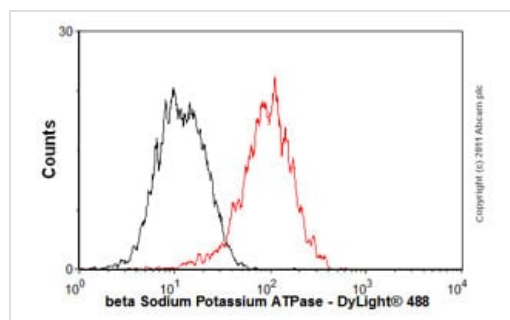
Developed using the ECL technique.

Performed under reducing conditions.

**Predicted band size:** 35 kDa

**Additional bands at:** 45 kDa. We are unsure as to the identity of these extra bands.

**Exposure time:** 4 minutes



Flow Cytometry (Intracellular) - Anti-ATP1B1 antibody [464.8] (ab8344)

Overlay histogram showing HepG2 cells stained with ab8344 (red line). The cells were fixed with 80% methanol (5 min) and then permeabilized with 0.1% PBS-Tween for 20 min. The cells were then incubated in 1x PBS / 10% normal goat serum / 0.3M glycine to block non-specific protein-protein interactions followed by the antibody (ab8344, 1/100 dilution) for 30 min at 22°C. The secondary antibody used was DyLight® 488 goat anti-mouse IgG (H+L) ([ab96879](#)) at 1/500 dilution for 30 min at 22°C. Isotype control antibody (black line) was mouse IgG2a [ICIGG2A] ([ab91361](#), 1µg/1x10<sup>6</sup> cells) used under the same conditions. Acquisition of >5,000 events was performed.

**Please note:** All products are "FOR RESEARCH USE ONLY. NOT FOR USE IN DIAGNOSTIC PROCEDURES"

### Our Abpromise to you: Quality guaranteed and expert technical support

---

- Replacement or refund for products not performing as stated on the datasheet
- Valid for 12 months from date of delivery
- Response to your inquiry within 24 hours
- We provide support in Chinese, English, French, German, Japanese and Spanish
- Extensive multi-media technical resources to help you
- We investigate all quality concerns to ensure our products perform to the highest standards

If the product does not perform as described on this datasheet, we will offer a refund or replacement. For full details of the Abpromise, please visit <https://www.abcam.com/abpromise> or contact our technical team.

### Terms and conditions

---

- Guarantee only valid for products bought direct from Abcam or one of our authorized distributors