




Product datasheet

Anti-ATP5O antibody ab230325

5 Images

Overview

Product name	Anti-ATP5O antibody
Description	Rabbit polyclonal to ATP5O
Host species	Rabbit
Tested applications	Suitable for: Flow Cyt (Intra), WB, IHC-P
Species reactivity	Reacts with: Human Predicted to work with: Cow, Pig, Orangutan 
Immunogen	Synthetic peptide corresponding to Human ATP5O aa 1-100. Database link: P48047  Run BLAST with  Run BLAST with
Positive control	IHC-P: Human skeletal muscle tissue. WB: HEK-293 cell lysate. Flow: HEK-293 cells.
General notes	<p>The Life Science industry has been in the grips of a reproducibility crisis for a number of years. Abcam is leading the way in addressing this with our range of recombinant monoclonal antibodies and knockout edited cell lines for gold-standard validation. Please check that this product meets your needs before purchasing.</p> <p>If you have any questions, special requirements or concerns, please send us an inquiry and/or contact our Support team ahead of purchase. Recommended alternatives for this product can be found below, along with publications, customer reviews and Q&As</p>

Properties

Form	Liquid
Storage instructions	Shipped at 4°C. Store at +4°C short term (1-2 weeks). Upon delivery aliquot. Store at -20°C long term. Avoid freeze / thaw cycle.
Storage buffer	pH: 7.4 Preservative: 0.09% Sodium azide Constituent: PBS
Purity	Protein A purified
Clonality	Polyclonal
Isotype	IgG

Applications

The Abpromise guarantee

Our **Abpromise guarantee** covers the use of ab230325 in the following tested applications.

The application notes include recommended starting dilutions; optimal dilutions/concentrations should be determined by the end user.

Application	Abreviews	Notes
Flow Cyt (Intra)		1/10 - 1/50.
WB		1/1000. Predicted molecular weight: 23 kDa.
IHC-P		Use a concentration of 5 µg/ml. Perform heat mediated antigen retrieval before commencing with IHC staining protocol.

Target

Function

Mitochondrial membrane ATP synthase (F(1)F(0) ATP synthase or Complex V) produces ATP from ADP in the presence of a proton gradient across the membrane which is generated by electron transport complexes of the respiratory chain. F-type ATPases consist of two structural domains, F(1) - containing the extramembraneous catalytic core and F(0) - containing the membrane proton channel, linked together by a central stalk and a peripheral stalk. During catalysis, ATP synthesis in the catalytic domain of F(1) is coupled via a rotary mechanism of the central stalk subunits to proton translocation. Part of the complex F(0) domain and the peripheric stalk, which acts as a stator to hold the catalytic alpha(3)beta(3) subcomplex and subunit a/ATP6 static relative to the rotary elements.

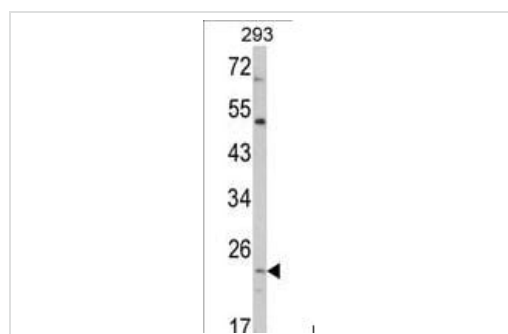
Sequence similarities

Belongs to the ATPase delta chain family.

Cellular localization

Mitochondrion. Mitochondrion inner membrane.

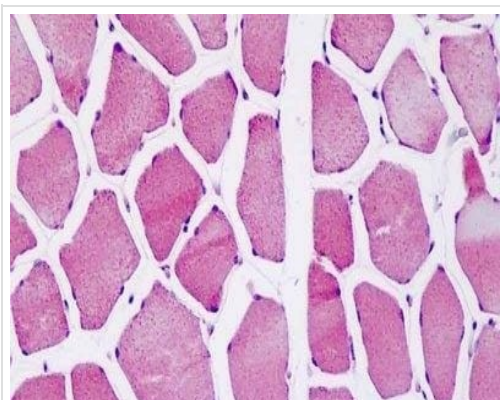
Images



Western blot - Anti-ATP5O antibody (ab230325)

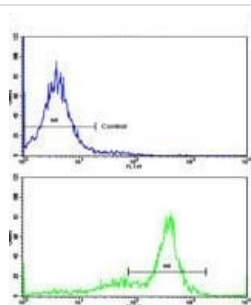
Anti-ATP5O antibody (ab230325) at 1/1000 dilution + HEK-293 (human epithelial cell line from embryonic kidney) whole cell lysate at 35 µg

Predicted band size: 23 kDa



Immunohistochemistry (Formalin/PFA-fixed paraffin-embedded sections) - Anti-ATP5O antibody (ab230325)

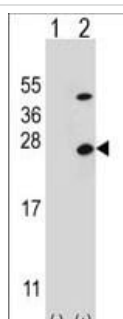
Formalin-fixed, paraffin-embedded human skeletal muscle tissue stained for ATP5O using ab230325 (5 µg/ml) in immunohistochemical analysis.



Flow Cytometry (Intracellular) - Anti-ATP5O antibody (ab230325)

Intracellular flow cytometric analysis of HEK-293 (human epithelial cell line from embryonic kidney) cells labeling ATP5O with ab230325 at 1/10 dilution (green) compared with a negative control (blue).

FITC-conjugated goat-anti-rabbit secondary antibodies were used for the analysis.



Western blot - Anti-ATP5O antibody (ab230325)

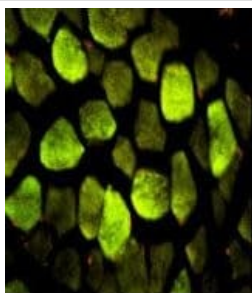
All lanes : Anti-ATP5O antibody (ab230325) at 1/1000 dilution

Lane 1 : Non-transfected HEK-293 (human epithelial cell line from embryonic kidney) whole cell lysate

Lane 2 : ATP5O-transfected HEK-293 (human epithelial cell line from embryonic kidney) whole cell lysate

Lysates/proteins at 2 µg per lane.

Predicted band size: 23 kDa



Immunohistochemistry (Formalin/PFA-fixed paraffin-embedded sections) - Anti-ATP5O antibody (ab230325)

Paraffin-embedded human skeletal muscle stained for ATP5O (green) using ab230325 (0.05 mg/ml) in immunohistochemical analysis.

FITC-conjugated goat anti-rabbit IgG was used as the secondary antibody. Counterstained with Propidium Iodide (red).

Please note: All products are "FOR RESEARCH USE ONLY. NOT FOR USE IN DIAGNOSTIC PROCEDURES"

Our Abpromise to you: Quality guaranteed and expert technical support

- Replacement or refund for products not performing as stated on the datasheet
- Valid for 12 months from date of delivery
- Response to your inquiry within 24 hours
- We provide support in Chinese, English, French, German, Japanese and Spanish
- Extensive multi-media technical resources to help you
- We investigate all quality concerns to ensure our products perform to the highest standards

If the product does not perform as described on this datasheet, we will offer a refund or replacement. For full details of the Abpromise, please visit <https://www.abcam.com/abpromise> or contact our technical team.

Terms and conditions

- Guarantee only valid for products bought direct from Abcam or one of our authorized distributors