


# Anti-ATP6V0A2 antibody ab96803

[5 References](#) [2 Images](#)

### Overview

<b>Product name</b>	Anti-ATP6V0A2 antibody
<b>Description</b>	Rabbit polyclonal to ATP6V0A2
<b>Host species</b>	Rabbit
<b>Tested applications</b>	<b>Suitable for:</b> WB, IHC-P
<b>Species reactivity</b>	<b>Reacts with:</b> Human <b>Predicted to work with:</b> Mouse, Rat, Cow 
<b>Immunogen</b>	Recombinant fragment corresponding to a region within amino acids 156-404 of Human ATP6V0A2 (NP_036595).
<b>Positive control</b>	293T, A431 and H1299 whole cell lysates; DLD1 xenograft; HeLa, HepG2, MOLT4 and Raji cell lysates
<b>General notes</b>	<p>The Life Science industry has been in the grips of a reproducibility crisis for a number of years. Abcam is leading the way in addressing this with our range of recombinant monoclonal antibodies and knockout edited cell lines for gold-standard validation. Please check that this product meets your needs before purchasing.</p> <p>If you have any questions, special requirements or concerns, please send us an inquiry and/or contact our Support team ahead of purchase. Recommended alternatives for this product can be found below, along with publications, customer reviews and Q&amp;As</p>

### Properties

<b>Form</b>	Liquid
<b>Storage instructions</b>	Shipped at 4°C. Upon delivery aliquot. Store at -20°C or -80°C. Avoid freeze / thaw cycle.
<b>Storage buffer</b>	pH: 7.00 Preservative: 0.01% Thimerosal (merthiolate) Constituents: 79.99% PBS, 20% Glycerol (glycerin, glycerine)
<b>Purity</b>	Immunogen affinity purified
<b>Clonality</b>	Polyclonal
<b>Isotype</b>	IgG

### Applications

## The Abpromise guarantee

Our **Abpromise guarantee** covers the use of ab96803 in the following tested applications.

The application notes include recommended starting dilutions; optimal dilutions/concentrations should be determined by the end user.

Application	Abreviews	Notes
WB		1/500 - 1/3000. Predicted molecular weight: 98 kDa.
IHC-P		1/100 - 1/500.

## Target

### Function

Part of the proton channel of V-ATPases. Essential component of the endosomal pH-sensing machinery. May play a role in maintaining the Golgi functions, such as glycosylation maturation, by controlling the Golgi pH.

### Involvement in disease

Defects in ATP6V0A2 are the cause of cutis laxa autosomal recessive type 2A (ARCL2A) [MIM:219200]. An autosomal recessive disorder characterized by an excessive congenital skin wrinkling, a large fontanelle with delayed closure, a typical facial appearance with downslanting palpebral fissures, a general connective tissue weakness, and varying degrees of growth and developmental delay and neurological abnormalities. Some affected individuals develop seizures and mental deterioration later in life, whereas the skin phenotype tends to become milder with age. At the molecular level, an abnormal glycosylation of serum proteins is observed in many cases.

Defects in ATP6V0A2 are a cause of wrinkly skin syndrome (WSS) [MIM:278250]. WSS is rare autosomal recessive disorder characterized by wrinkling of the skin of the dorsum of the hands and feet, an increased number of palmar and plantar creases, wrinkled abdominal skin, multiple musculoskeletal abnormalities, microcephaly, growth failure and developmental delay.

### Sequence similarities

Belongs to the V-ATPase 116 kDa subunit family.

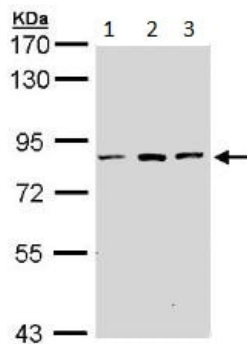
### Post-translational modifications

Phosphorylated upon DNA damage, probably by ATM or ATR.

### Cellular localization

Cell membrane. Endosome membrane. In kidney proximal tubules, also detected in subapical vesicles.

## Images



Western blot - Anti-ATP6V0A2 antibody (ab96803)

**All lanes :** Anti-ATP6V0A2 antibody (ab96803) at 1/10000 dilution

**Lane 1 :** 293T whole cell lysate

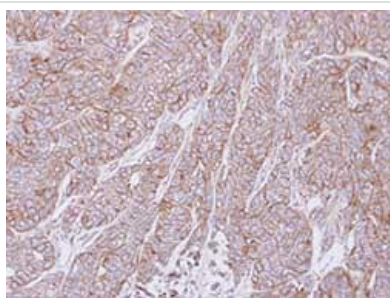
**Lane 2 :** A431 whole cell lysate

**Lane 3 :** H1299 whole cell lysate

Lysates/proteins at 30 µg per lane.

**Predicted band size:** 98 kDa

7.5% SDS PAGE



Immunohistochemistry (Formalin/PFA-fixed paraffin-embedded sections) - Anti-ATP6V0A2 antibody (ab96803)

ab96803, at 1/500 dilution, staining ATP6V0A2 in paraffin-embedded DLD1 xenograft by Immunohistochemistry.

**Please note:** All products are "FOR RESEARCH USE ONLY. NOT FOR USE IN DIAGNOSTIC PROCEDURES"

### Our Abpromise to you: Quality guaranteed and expert technical support

- Replacement or refund for products not performing as stated on the datasheet
- Valid for 12 months from date of delivery
- Response to your inquiry within 24 hours
- We provide support in Chinese, English, French, German, Japanese and Spanish
- Extensive multi-media technical resources to help you
- We investigate all quality concerns to ensure our products perform to the highest standards

If the product does not perform as described on this datasheet, we will offer a refund or replacement. For full details of the Abpromise, please visit <https://www.abcam.com/abpromise> or contact our technical team.

### Terms and conditions

- Guarantee only valid for products bought direct from Abcam or one of our authorized distributors