


### Anti-ATPAF2 antibody ab74235

1 Image

#### Overview

|                            |   |
|----------------------------|---|
| <b>Product name</b>        | Anti-ATPAF2 antibody  |
| <b>Description</b>         | Rabbit polyclonal to ATPAF2   |
| <b>Host species</b>        | Rabbit  |
| <b>Tested applications</b> | <b>Suitable for:</b> WB   |
| <b>Species reactivity</b>  | <b>Reacts with:</b> Human<br><b>Predicted to work with:</b> Mouse    |
| <b>Immunogen</b>           | A synthesized peptide derived from the internal region of human ATPAF2.   |
| <b>Positive control</b>    | Extracts from Jurkat cells.   |
| <b>General notes</b>       | <p>The Life Science industry has been in the grips of a reproducibility crisis for a number of years. Abcam is leading the way in addressing this with our range of recombinant monoclonal antibodies and knockout edited cell lines for gold-standard validation. Please check that this product meets your needs before purchasing.</p> <p>If you have any questions, special requirements or concerns, please send us an inquiry and/or contact our Support team ahead of purchase. Recommended alternatives for this product can be found below, along with publications, customer reviews and Q&amp;As</p> |

#### Properties

|                             |  |
|-----------------------------|--|
| <b>Form</b>                 | Liquid   |
| <b>Storage instructions</b> | Shipped at 4°C. Upon delivery aliquot and store at -20°C. Avoid freeze / thaw cycles.  |
| <b>Storage buffer</b>       | pH: 7.40<br>Preservative: 0.02% Sodium azide<br>Constituents: 50% Glycerol (glycerin, glycerine), 0.87% Sodium chloride, PBS |
| <b>Purity</b>               | Immunogen affinity purified  |
| <b>Clonality</b>            | Polyclonal   |
| <b>Isotype</b>              | IgG  |

#### Applications

The **Abpromise guarantee** Our **Abpromise guarantee** covers the use of ab74235 in the following tested applications.

The application notes include recommended starting dilutions; optimal dilutions/concentrations should be determined by the end user.

| Application | Abreviews | Notes  |
|-------------|-----------|--|
| WB          |           | 1/500 - 1/1000. Detects a band of approximately 33 kDa (predicted molecular weight: 33 kDa). |

## Target

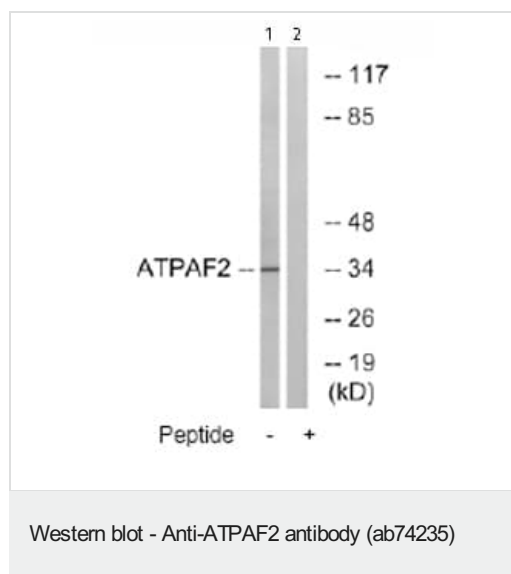
### Relevance

ATPAF2 belongs to the ATP12 family. It may play a role in the assembly of the F1 component of the mitochondrial ATP synthase (ATPase). Defects in ATPAF2 are the cause of complex V mitochondrial respiratory chain ATPAF2 subunit deficiency (ATPAF2 deficiency) [MIM:604273]; also called ATP synthase deficiency or ATPase deficiency. ATPAF2 deficiency seems to be an early presenting disease in which lactic acidosis, dysmorphic features, and methyl glutaconic aciduria can be major clues in the diagnosis. Dysmorphic features include a large mouth, prominent nasal bridge, micrognathia, rocker-bottom feet and flexion contractures of the limbs associated with camptodactyly. Patients are hypertonic and have an enlarged liver, hypoplastic kidneys and elevated lactate levels in urine, plasma and cerebro spinal fluid (CSF).

### Cellular localization

Mitochondrion

## Images



**All lanes :** Anti-ATPAF2 antibody (ab74235) at 1/500 dilution

**Lane 1 :** Extracts from Jurkat cells

**Lane 2 :** Extracts from Jurkat cells plus 5µg immunizing peptide

Lysates/proteins at 5 µg per lane.

**Predicted band size:** 33 kDa

**Observed band size:** 33 kDa

**Please note:** All products are "FOR RESEARCH USE ONLY. NOT FOR USE IN DIAGNOSTIC PROCEDURES"

## Our Abpromise to you: Quality guaranteed and expert technical support

- Replacement or refund for products not performing as stated on the datasheet
- Valid for 12 months from date of delivery
- Response to your inquiry within 24 hours
- We provide support in Chinese, English, French, German, Japanese and Spanish

- Extensive multi-media technical resources to help you
- We investigate all quality concerns to ensure our products perform to the highest standards

If the product does not perform as described on this datasheet, we will offer a refund or replacement. For full details of the Abpromise, please visit <https://www.abcam.com/abpromise> or contact our technical team.

#### **Terms and conditions**

---

- Guarantee only valid for products bought direct from Abcam or one of our authorized distributors