

## Product datasheet

# Anti-AUTS2 antibody ab96326

★★★★★ [1 Abreviews](#) [4 References](#) [2 Images](#)

### Overview

---

<b>Product name</b>	Anti-AUTS2 antibody
<b>Description</b>	Rabbit polyclonal to AUTS2
<b>Host species</b>	Rabbit
<b>Tested applications</b>	<b>Suitable for:</b> WB
<b>Species reactivity</b>	<b>Reacts with:</b> Mouse, Human
<b>Immunogen</b>	Recombinant protein fragment contain a sequence corresponding to a region within amino acids 524 and 770 of AUTS2
<b>Positive control</b>	Raji whole cell lysate ( <a href="#">ab30124</a> ) can be used as a positive control in WB. 293T and NIH-3T3 cell lysate
<b>General notes</b>	<p>The Life Science industry has been in the grips of a reproducibility crisis for a number of years. Abcam is leading the way in addressing this with our range of recombinant monoclonal antibodies and knockout edited cell lines for gold-standard validation. Please check that this product meets your needs before purchasing.</p> <p>If you have any questions, special requirements or concerns, please send us an inquiry and/or contact our Support team ahead of purchase. Recommended alternatives for this product can be found below, along with publications, customer reviews and Q&amp;As</p>

### Properties

---

<b>Form</b>	Liquid
<b>Storage instructions</b>	Shipped at 4°C. Upon delivery aliquot and store at -20°C or -80°C. Avoid repeated freeze / thaw cycles.
<b>Storage buffer</b>	pH: 7.00 Preservative: 0.025% Proclin 300 Constituents: 79% PBS, 20% Glycerol (glycerin, glycerine)
<b>Purity</b>	Immunogen affinity purified
<b>Clonality</b>	Polyclonal
<b>Isotype</b>	IgG

### Applications

---

## The Abpromise guarantee

Our **Abpromise guarantee** covers the use of ab96326 in the following tested applications.

The application notes include recommended starting dilutions; optimal dilutions/concentrations should be determined by the end user.

Application	Abreviews	Notes
WB	★★★★★ (1)	1/500 - 1/3000. Predicted molecular weight: 139 kDa.

## Target

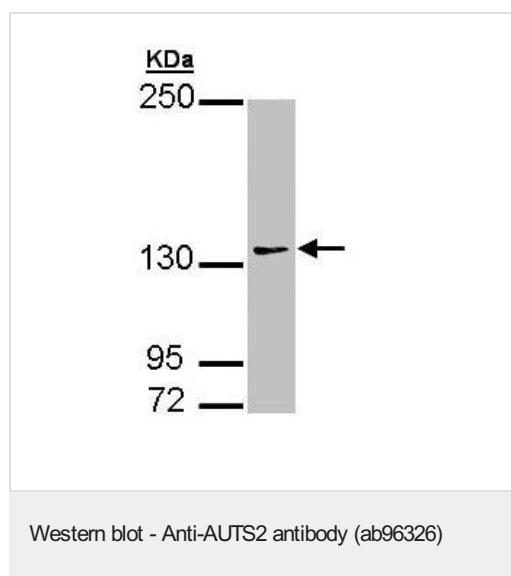
### Tissue specificity

Strongly expressed in brain, skeletal muscle and kidney. Also expressed in placenta, lung and leukocytes.

### Sequence similarities

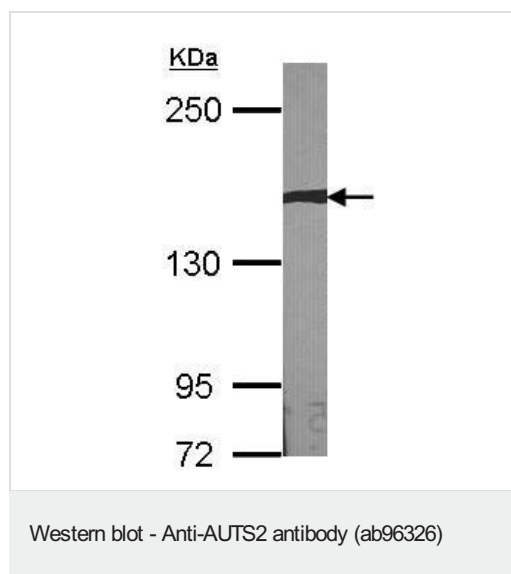
Belongs to the AUTS2 family.

## Images



Anti-AUTS2 antibody (ab96326) at 1/1000 dilution + 293T cell lysate at 30  $\mu$ g

**Predicted band size:** 139 kDa



Anti-AUTS2 antibody (ab96326) at 1/1000 dilution + NIH3T3 cell lysate at 30  $\mu$ g

**Predicted band size:** 139 kDa

**Please note:** All products are "FOR RESEARCH USE ONLY. NOT FOR USE IN DIAGNOSTIC PROCEDURES"

### **Our Abpromise to you: Quality guaranteed and expert technical support**

---

- Replacement or refund for products not performing as stated on the datasheet
- Valid for 12 months from date of delivery
- Response to your inquiry within 24 hours
  
- We provide support in Chinese, English, French, German, Japanese and Spanish
- Extensive multi-media technical resources to help you
- We investigate all quality concerns to ensure our products perform to the highest standards

If the product does not perform as described on this datasheet, we will offer a refund or replacement. For full details of the Abpromise, please visit <https://www.abcam.com/abpromise> or contact our technical team.

### **Terms and conditions**

---

- Guarantee only valid for products bought direct from Abcam or one of our authorized distributors