

Product datasheet

Anti-B7H4 antibody [188] ab135262

[1 Image](#)

Overview

Product name	Anti-B7H4 antibody [188]
Description	Rat monoclonal [188] to B7H4
Host species	Rat
Tested applications	Suitable for: Flow Cyt
Species reactivity	Reacts with: Mouse
Immunogen	Full length native protein (purified) corresponding to B7H4.
Positive control	Mouse B7H4 transfected L5178Y cells
General notes	<p>The Life Science industry has been in the grips of a reproducibility crisis for a number of years. Abcam is leading the way in addressing this with our range of recombinant monoclonal antibodies and knockout edited cell lines for gold-standard validation. Please check that this product meets your needs before purchasing.</p> <p>If you have any questions, special requirements or concerns, please send us an inquiry and/or contact our Support team ahead of purchase. Recommended alternatives for this product can be found below, along with publications, customer reviews and Q&As</p>

Properties

Form	Liquid
Storage instructions	Shipped at 4°C. Store at +4°C short term (1-2 weeks). Store at -20°C or -80°C. Avoid freeze / thaw cycle.
Storage buffer	pH: 7.2 Preservative: 0.09% Sodium azide Aqueous buffer may contain carrier protein/stabilizer
Purity	Protein A purified
Clonality	Monoclonal
Clone number	188
Isotype	IgG2b
Light chain type	kappa

Applications

The Abpromise guarantee

Our **Abpromise guarantee** covers the use of ab135262 in the following tested applications.

The application notes include recommended starting dilutions; optimal dilutions/concentrations should be determined by the end user.

Application	Abreviews	Notes
Flow Cyt		Use 0.5µg for 10 ⁵⁻⁸ cells. In a final volume of 100 µl. ab18536 - Rat monoclonal IgG2b, is suitable for use as an isotype control with this antibody.

Target

Function

Negatively regulates T-cell-mediated immune response by inhibiting T-cell activation, proliferation, cytokine production and development of cytotoxicity. When expressed on the cell surface of tumor macrophages, plays an important role, together with regulatory T-cells (Treg), in the suppression of tumor-associated antigen-specific T-cell immunity. Involved in promoting epithelial cell transformation.

Tissue specificity

Overexpressed in breast, ovarian, endometrial, renal cell (RCC) and non-small-cell lung cancers (NSCLC). Expressed on activated T- and B-cells, monocytes and dendritic cells, but not expressed in most normal tissues (at protein level). Widely expressed, including in kidney, liver, lung, ovary, placenta, spleen and testis.

Sequence similarities

Belongs to the immunoglobulin superfamily. BTN/MOG family.
Contains 2 Ig-like V-type (immunoglobulin-like) domains.

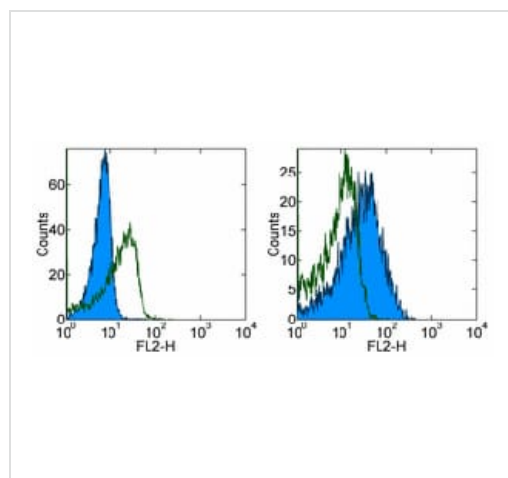
Post-translational modifications

N-glycosylated.

Cellular localization

Cell membrane. Expressed at the cell surface. A soluble form has also been detected.

Images



Staining of non-transfected (left) and mouse B7H4 transfected (right) L5178Y cells with 0.25 µg of rat IgG2b kappa Isotype Control Purified (open histogram) or 0.25 µg of ab135262 (filled histogram), followed by Anti-rat IgG Biotin and Streptavidin PE. Total viable cells were used for analysis.

Flow Cytometry - Anti-B7H4 antibody [188]

(ab135262)

Please note: All products are "FOR RESEARCH USE ONLY. NOT FOR USE IN DIAGNOSTIC PROCEDURES"

Our Abpromise to you: Quality guaranteed and expert technical support

- Replacement or refund for products not performing as stated on the datasheet
- Valid for 12 months from date of delivery
- Response to your inquiry within 24 hours

- We provide support in Chinese, English, French, German, Japanese and Spanish
- Extensive multi-media technical resources to help you
- We investigate all quality concerns to ensure our products perform to the highest standards

If the product does not perform as described on this datasheet, we will offer a refund or replacement. For full details of the Abpromise, please visit <https://www.abcam.com/abpromise> or contact our technical team.

Terms and conditions

- Guarantee only valid for products bought direct from Abcam or one of our authorized distributors