

## Product datasheet

# Anti-BAF57/SMARCE1 antibody ab70540

[20 References](#) [4 Images](#)

### Overview

---

<b>Product name</b>	Anti-BAF57/SMARCE1 antibody
<b>Description</b>	Rabbit polyclonal to BAF57/SMARCE1
<b>Host species</b>	Rabbit
<b>Tested applications</b>	<b>Suitable for:</b> WB, IP, IHC-P
<b>Species reactivity</b>	<b>Reacts with:</b> Mouse, Human <b>Predicted to work with:</b> Rabbit, Horse, Chimpanzee, Rhesus monkey, Gorilla, Orangutan, Bat



<b>Immunogen</b>	Synthetic peptide. This information is proprietary to Abcam and/or its suppliers.
<b>Positive control</b>	Whole cell lysate from HeLa, 293T or NIH3T3 cells
<b>General notes</b>	<p>The Life Science industry has been in the grips of a reproducibility crisis for a number of years. Abcam is leading the way in addressing this with our range of recombinant monoclonal antibodies and knockout edited cell lines for gold-standard validation. Please check that this product meets your needs before purchasing.</p> <p>If you have any questions, special requirements or concerns, please send us an inquiry and/or contact our Support team ahead of purchase. Recommended alternatives for this product can be found below, along with publications, customer reviews and Q&amp;As</p>

### Properties

---

<b>Form</b>	Liquid
<b>Storage instructions</b>	Shipped at 4°C. Upon delivery aliquot and store at -20°C. Avoid freeze / thaw cycles.
<b>Storage buffer</b>	pH: 7 Preservative: 0.09% Sodium azide Constituents: 1.815% Tris, 1.764% Sodium citrate, 0.021% PBS
<b>Purity</b>	Immunogen affinity purified
<b>Clonality</b>	Polyclonal
<b>Isotype</b>	IgG

### Applications

---

## The Abpromise guarantee

Our **Abpromise guarantee** covers the use of ab70540 in the following tested applications.

The application notes include recommended starting dilutions; optimal dilutions/concentrations should be determined by the end user.

Application	Abreviews	Notes
WB		1/2000 - 1/10000. Detects a band of approximately 55 kDa (predicted molecular weight: 47 kDa).
IP		Use at 2-5 µg/mg of lysate.
IHC-P		Use a concentration of 1 µg/ml. Perform heat mediated antigen retrieval with citrate buffer pH 6 before commencing with IHC staining protocol.

## Target

### Function

Involved in transcriptional activation and repression of select genes by chromatin remodeling (alteration of DNA-nucleosome topology). Belongs to the neural progenitors-specific chromatin remodeling complex (npBAF complex) and the neuron-specific chromatin remodeling complex (nBAF complex). During neural development a switch from a stem/progenitor to a post-mitotic chromatin remodeling mechanism occurs as neurons exit the cell cycle and become committed to their adult state. The transition from proliferating neural stem/progenitor cells to post-mitotic neurons requires a switch in subunit composition of the npBAF and nBAF complexes. As neural progenitors exit mitosis and differentiate into neurons, npBAF complexes which contain ACTL6A/BAF53A and PHF10/BAF45A, are exchanged for homologous alternative ACTL6B/BAF53B and DPF1/BAF45B or DPF3/BAF45C subunits in neuron-specific complexes (nBAF). The npBAF complex is essential for the self-renewal/proliferative capacity of the multipotent neural stem cells. The nBAF complex along with CREST plays a role regulating the activity of genes essential for dendrite growth (By similarity). Required for the coactivation of estrogen responsive promoters by Swi/Snf complexes and the SRC/p160 family of histone acetyltransferases (HATs). Also specifically interacts with the CoREST corepressor resulting in repression of neuronal specific gene promoters in non-neuronal cells. Also involved in vitamin D-coupled transcription regulation via its association with the WINAC complex, a chromatin-remodeling complex recruited by vitamin D receptor (VDR), which is required for the ligand-bound VDR-mediated transrepression of the CYP27B1 gene.

### Sequence similarities

Contains 1 HMG box DNA-binding domain.

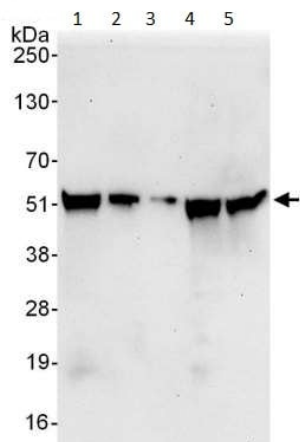
### Domain

The HMG domain is essential for CD4 silencing and CD8 activation; mutation of this domain blocks thymus development.

### Cellular localization

Nucleus.

## Images



Western blot - Anti-BAF57/SMARCE1 antibody (ab70540)

**All lanes** : Anti-BAF57/SMARCE1 antibody (ab70540) at 0.1 µg/ml

**Lane 1** : HeLa whole cell lysate at 5 µg

**Lane 2** : HeLa whole cell lysate at 15 µg

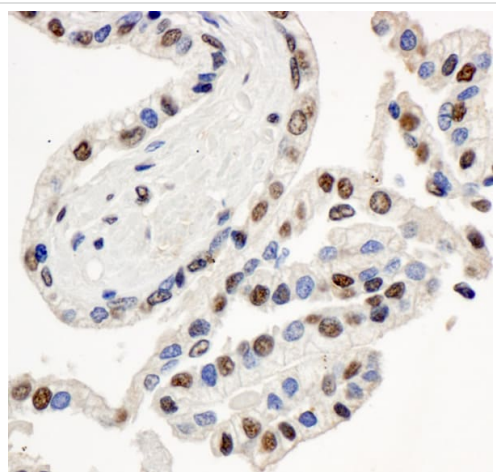
**Lane 3** : HeLa whole cell lysate at 50 µg

**Lane 4** : 293T cells at 50 µg

**Lane 5** : NIH3T3 cells at 50 µg

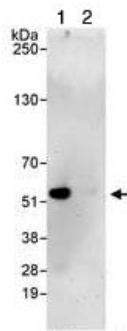
**Predicted band size:** 47 kDa

**Exposure time:** 30 seconds



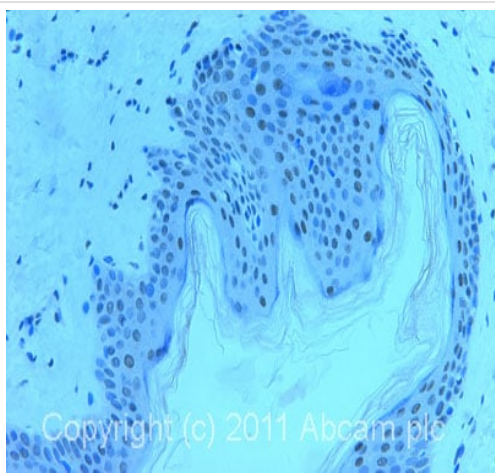
Immunohistochemistry (Formalin/PFA-fixed paraffin-embedded sections) - Anti-BAF57/SMARCE1 antibody (ab70540)

Immunohistochemistry (Formalin/PFA-fixed paraffin-embedded sections) analysis of human prostate carcinoma tissue labelling BAF57/SMARCE1 with ab70540 at 1/1000 (1 µg/ml). Detection: DAB.



Immunoprecipitation - Anti-BAF57/SMARCE1 antibody (ab70540)

1mg of lysate from HeLa cells was immunoprecipitated using ab70540 at 3ug/mg of lysate (lane 1 or a control rabbit IgG (lane 2)). For the subsequent western blot, 20% of immunoprecipitate was loaded per lane, and ab70540 was used at 1ug/ml.



Immunohistochemistry (Formalin/PFA-fixed paraffin-embedded sections) - Anti-BAF57/SMARCE1 antibody (ab70540)

IHC image of ab70540 staining in normal human skin formalin fixed paraffin embedded tissue section, performed on a Leica Bond™ system using the standard protocol F. The section was pre-treated using heat mediated antigen retrieval with sodium citrate buffer (pH6, epitope retrieval solution 1) for 20 mins. The section was then incubated with ab70540, 1µg/ml, for 15 mins at room temperature and detected using an HRP conjugated compact polymer system. DAB was used as the chromogen. The section was then counterstained with haematoxylin and mounted with DPX.

For other IHC staining systems (automated and non-automated) customers should optimize variable parameters such as antigen retrieval conditions, primary antibody concentration and antibody incubation times.

**Please note:** All products are "FOR RESEARCH USE ONLY. NOT FOR USE IN DIAGNOSTIC PROCEDURES"

### Our Abpromise to you: Quality guaranteed and expert technical support

- Replacement or refund for products not performing as stated on the datasheet
- Valid for 12 months from date of delivery
- Response to your inquiry within 24 hours
- We provide support in Chinese, English, French, German, Japanese and Spanish
- Extensive multi-media technical resources to help you
- We investigate all quality concerns to ensure our products perform to the highest standards

If the product does not perform as described on this datasheet, we will offer a refund or replacement. For full details of the Abpromise, please visit <https://www.abcam.com/abpromise> or contact our technical team.

### Terms and conditions

- Guarantee only valid for products bought direct from Abcam or one of our authorized distributors