

## Product datasheet

# Anti-BARD1 antibody ab226854

[4 References](#) [4 Images](#)

### Overview

---

<b>Product name</b>	Anti-BARD1 antibody
<b>Description</b>	Rabbit polyclonal to BARD1
<b>Host species</b>	Rabbit
<b>Tested applications</b>	<b>Suitable for:</b> WB, IHC-P, ICC/IF
<b>Species reactivity</b>	<b>Reacts with:</b> Mouse, Rat, Human
<b>Immunogen</b>	Recombinant fragment within Human BARD1 (internal sequence). The exact sequence is proprietary. Database link: <a href="#">Q99728</a>
<b>Positive control</b>	WB: A431 whole cell and nuclear extracts. IHC-P: Mouse and rat brain tissues. ICC/IF: A431 cells.
<b>General notes</b>	<p>The Life Science industry has been in the grips of a reproducibility crisis for a number of years. Abcam is leading the way in addressing this with our range of recombinant monoclonal antibodies and knockout edited cell lines for gold-standard validation. Please check that this product meets your needs before purchasing.</p> <p>If you have any questions, special requirements or concerns, please send us an inquiry and/or contact our Support team ahead of purchase. Recommended alternatives for this product can be found below, along with publications, customer reviews and Q&amp;As</p>

### Properties

---

<b>Form</b>	Liquid
<b>Storage instructions</b>	Shipped at 4°C. Store at +4°C short term (1-2 weeks). Upon delivery aliquot. Store at -20°C long term. Avoid freeze / thaw cycle.
<b>Storage buffer</b>	pH: 7.00 Preservative: 0.025% Proclin 300 Constituents: 79% PBS, 20% Glycerol (glycerin, glycerine)
<b>Purity</b>	Immunogen affinity purified
<b>Clonality</b>	Polyclonal
<b>Isotype</b>	IgG

### Applications

---

## The Abpromise guarantee

Our **Abpromise guarantee** covers the use of ab226854 in the following tested applications.

The application notes include recommended starting dilutions; optimal dilutions/concentrations should be determined by the end user.

Application	Abreviews	Notes
WB		1/500 - 1/3000. Predicted molecular weight: 87 kDa.
IHC-P		1/100 - 1/1000.
ICC/IF		1/100 - 1/1000.

## Target

### Function

Probable E3 ubiquitin-protein ligase. The BRCA1-BARD1 heterodimer specifically mediates the formation of 'Lys-6'-linked polyubiquitin chains and coordinates a diverse range of cellular pathways such as DNA damage repair, ubiquitination and transcriptional regulation to maintain genomic stability. Plays a central role in the control of the cell cycle in response to DNA damage. Acts by mediating ubiquitin E3 ligase activity that is required for its tumor suppressor function. Also forms a heterodimer with CSTF1/CSTF-50 to modulate mRNA processing and RNAP II stability by inhibiting pre-mRNA 3' cleavage.

### Pathway

Protein modification; protein ubiquitination.

### Sequence similarities

Contains 4 ANK repeats.  
Contains 2 BRCT domains.  
Contains 1 RING-type zinc finger.

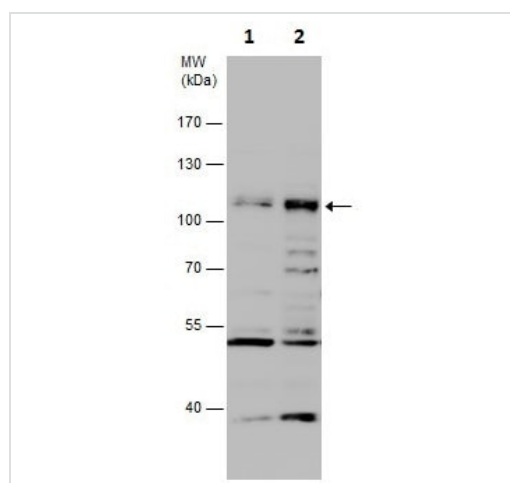
### Post-translational modifications

Processed during apoptosis. The homodimer is more susceptible to proteolytic cleavage than the BARD1/BRCA1 heterodimer.

### Cellular localization

Nucleus. During S phase of the cell cycle, colocalizes with BRCA1 into discrete subnuclear foci. Can translocate to the cytoplasm. Localizes at sites of DNA damage at double-strand breaks (DSBs); recruitment to DNA damage sites is mediated by the BRCA1-A complex.

## Images



Western blot - Anti-BARD1 antibody (ab226854)

**All lanes** : Anti-BARD1 antibody (ab226854) at 1/1000 dilution

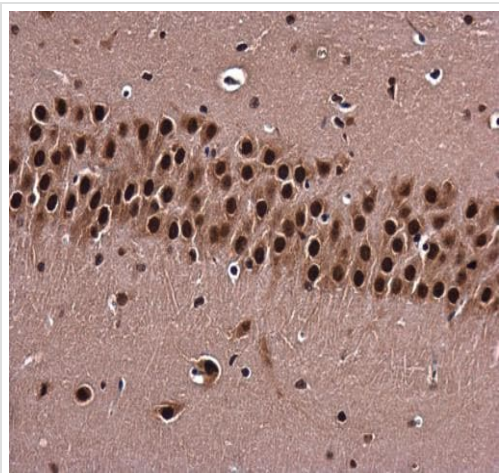
**Lane 1** : A431 (human epidermoid carcinoma cell line) whole cell extract

**Lane 2** : A431 nuclear extract

Lysates/proteins at 30 µg per lane.

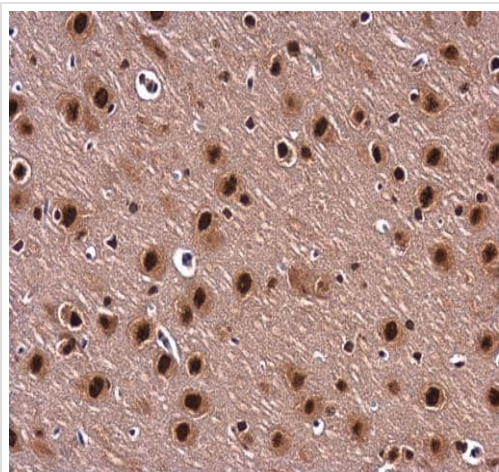
**Predicted band size:** 87 kDa

7.5% SDS-PAGE gel.



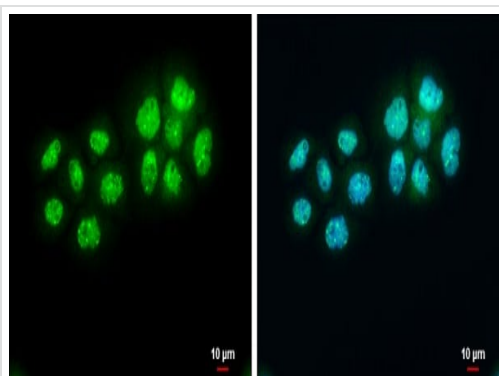
Paraffin-embedded mouse brain tissue stained for BARD1 with ab226854 at 1/400 dilution in immunohistochemical analysis

Immunohistochemistry (Formalin/PFA-fixed paraffin-embedded sections) - Anti-BARD1 antibody (ab226854)



Paraffin-embedded rat brain tissue stained for BARD1 with ab226854 at 1/400 dilution in immunohistochemical analysis

Immunohistochemistry (Formalin/PFA-fixed paraffin-embedded sections) - Anti-BARD1 antibody (ab226854)



4% paraformaldehyde-fixed A431 (human epidermoid carcinoma cell line) cells stained for BARD1 (green) using ab226854 at 1/500 dilution in ICC/IF.

Blue: Hoechst 33342 staining.

Immunocytochemistry/ Immunofluorescence - Anti-BARD1 antibody (ab226854)

**Please note:** All products are "FOR RESEARCH USE ONLY. NOT FOR USE IN DIAGNOSTIC PROCEDURES"

### **Our Abpromise to you: Quality guaranteed and expert technical support**

---

- Replacement or refund for products not performing as stated on the datasheet
- Valid for 12 months from date of delivery
- Response to your inquiry within 24 hours
  
- We provide support in Chinese, English, French, German, Japanese and Spanish
- Extensive multi-media technical resources to help you
- We investigate all quality concerns to ensure our products perform to the highest standards

If the product does not perform as described on this datasheet, we will offer a refund or replacement. For full details of the Abpromise, please visit <https://www.abcam.com/abpromise> or contact our technical team.

### **Terms and conditions**

---

- Guarantee only valid for products bought direct from Abcam or one of our authorized distributors