


Product datasheet

Anti-BCAS3 antibody ab71162

[1 Abreviews](#) [3 Images](#)

Overview

Product name	Anti-BCAS3 antibody
Description	Rabbit polyclonal to BCAS3
Host species	Rabbit
Tested applications	Suitable for: WB, IP, IHC-P
Species reactivity	Reacts with: Human Predicted to work with: Mouse, Rhesus monkey, Orangutan 
Immunogen	A synthetic peptide corresponding to a region between residue 870 and the C terminus (residue 928) of human Breast carcinoma amplified sequence 3 (BAB15156.1)
Positive control	Whole cell lysate from MCF7 cells.
General notes	<p>The Life Science industry has been in the grips of a reproducibility crisis for a number of years. Abcam is leading the way in addressing this with our range of recombinant monoclonal antibodies and knockout edited cell lines for gold-standard validation. Please check that this product meets your needs before purchasing.</p> <p>If you have any questions, special requirements or concerns, please send us an inquiry and/or contact our Support team ahead of purchase. Recommended alternatives for this product can be found below, along with publications, customer reviews and Q&As</p>

Properties

Form	Liquid
Storage instructions	Shipped at 4°C. Upon delivery aliquot and store at -20°C. Avoid freeze / thaw cycles.
Storage buffer	pH: 6.8 Preservative: 0.09% Sodium azide Constituents: 0.1% BSA, Tris buffered saline
Purity	Immunogen affinity purified
Clonality	Polyclonal
Isotype	IgG

Applications

The Abpromise guarantee

Our **Abpromise guarantee** covers the use of ab71162 in the following tested applications.

The application notes include recommended starting dilutions; optimal dilutions/concentrations should be determined by the end user.

Application	Abreviews	Notes
WB		1/2000 - 1/10000. Detects a band of approximately 117 kDa (predicted molecular weight: 101 kDa).
IP		Use at 2-5 µg/mg of lysate.
IHC-P		1/100 - 1/500. Perform heat mediated antigen retrieval before commencing with IHC staining protocol.

Target

Tissue specificity

Expressed in stomach, liver, lung, kidney, prostate, testis, thyroid gland, adrenal gland, brain, heart, skeletal muscle, colon, spleen, small intestine, placenta, blood leukocyte and mammary epithelial cells. Overexpressed in most breast cancer cell lines.

Involvement in disease

Note=A chromosomal aberration involving BCAS3 has been found in some breast carcinoma cell lines. Translocation t(17;20)(q23;q13) with BCAS4.

Sequence similarities

Belongs to the WD repeat BCAS3 family.
Contains 3 WD repeats.

Developmental stage

Fetal.

Cellular localization

Nucleus.

Images



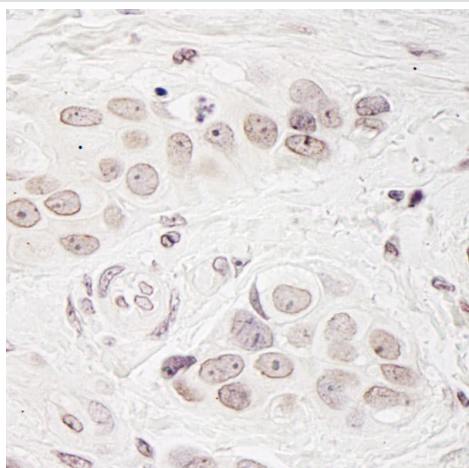
Immunoprecipitation/ Western Blot of Breast carcinoma amplified sequence 3.

Lane 1: ab71162 at 3µg/mg whole cell lysate.

Lane 2: Control IgG.

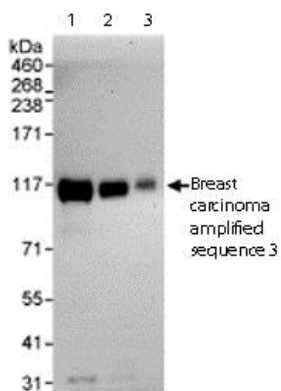
All lanes: Whole cell lysate from MCF7 cells at 1mg for IP, 20% of IP loaded.

Detection: Chemiluminescence with an exposure time of 1 second.



Immunohistochemistry (Formalin/PFA-fixed paraffin-embedded sections) - Anti-BCAS3 antibody (ab71162)

Immunohistochemistry (Formalin/PFA-fixed paraffin-embedded sections) analysis of human breast carcinoma tissue labelling BCAS3 with ab71162 at 1/200 (1µg/ml). Detection: DAB.



Western blot - Anti-BCAS3 antibody (ab71162)

All lanes : Anti-BCAS3 antibody (ab71162) at 0.04 µg/ml

Lane 1 : Whole cell lysate from MCF7 cells at 50 µg

Lane 2 : Whole cell lysate from MCF7 cells at 15 µg

Lane 3 : Whole cell lysate from MCF7 cells at 5 µg

Developed using the ECL technique.

Predicted band size: 101 kDa

Observed band size: 117 kDa

Exposure time: 1 minute

Please note: All products are "FOR RESEARCH USE ONLY. NOT FOR USE IN DIAGNOSTIC PROCEDURES"

Our Promise to you: Quality guaranteed and expert technical support

- Replacement or refund for products not performing as stated on the datasheet
- Valid for 12 months from date of delivery
- Response to your inquiry within 24 hours
- We provide support in Chinese, English, French, German, Japanese and Spanish
- Extensive multi-media technical resources to help you
- We investigate all quality concerns to ensure our products perform to the highest standards

If the product does not perform as described on this datasheet, we will offer a refund or replacement. For full details of the Abpromise, please visit <https://www.abcam.com/abpromise> or contact our technical team.

Terms and conditions

- Guarantee only valid for products bought direct from Abcam or one of our authorized distributors