



## Product datasheet

### Anti-BCAT1 antibody ab232706

7 Images

#### Overview

<b>Product name</b>	Anti-BCAT1 antibody
<b>Description</b>	Rabbit polyclonal to BCAT1
<b>Host species</b>	Rabbit
<b>Tested applications</b>	<b>Suitable for:</b> IHC-P, WB
<b>Species reactivity</b>	<b>Reacts with:</b> Mouse, Rat
<b>Immunogen</b>	Recombinant fragment (His-T7-tag) corresponding to Rat BCAT1 aa 150 to the C-terminus. Two N-terminal tags, (Expressed in E.coli). Database link: <a href="#">P54690</a>
	 <a href="#">Run BLAST with</a>  <a href="#">Run BLAST with</a>
<b>Positive control</b>	WB: Mouse heart and cerebrum lysate; Rat cerebrum lysate; Recombinant rat BCAT1 protein. IHC-P: Rat testis, heart and brain tissue.
<b>General notes</b>	<p>The Life Science industry has been in the grips of a reproducibility crisis for a number of years. Abcam is leading the way in addressing this with our range of recombinant monoclonal antibodies and knockout edited cell lines for gold-standard validation. Please check that this product meets your needs before purchasing.</p> <p>If you have any questions, special requirements or concerns, please send us an inquiry and/or contact our Support team ahead of purchase. Recommended alternatives for this product can be found below, along with publications, customer reviews and Q&amp;As</p>

#### Properties

<b>Form</b>	Liquid
<b>Storage instructions</b>	Shipped at 4°C. Store at +4°C short term (1-2 weeks). Upon delivery aliquot. Store at -20°C long term. Avoid freeze / thaw cycle.
<b>Storage buffer</b>	pH: 7.40 Preservative: 0.011% Proclin 300 Constituents: 55.77% Glycerol (glycerin, glycerine), 44.219% PBS
<b>Purity</b>	Immunogen affinity purified
<b>Purification notes</b>	Antigen-specific affinity chromatography followed by Protein A affinity chromatography.
<b>Clonality</b>	Polyclonal
<b>Isotype</b>	IgG

## Applications

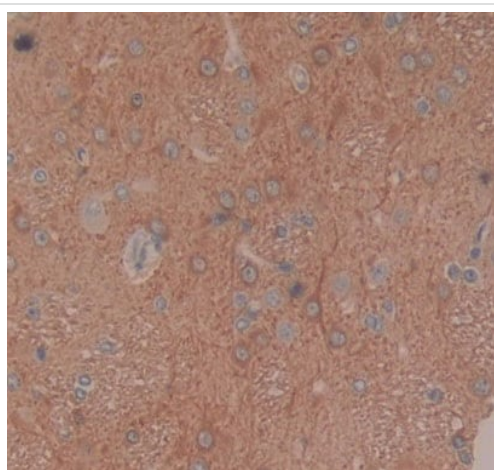
**The Abpromise guarantee** Our **Abpromise guarantee** covers the use of ab232706 in the following tested applications. The application notes include recommended starting dilutions; optimal dilutions/concentrations should be determined by the end user.

Application	Abreviews	Notes
IHC-P		Use a concentration of 5 - 20 µg/ml.
WB		Use a concentration of 0.2 - 2 µg/ml.

## Target

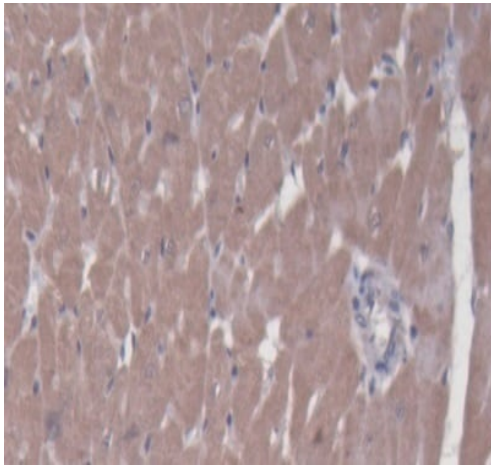
<b>Function</b>	Catalyzes the first reaction in the catabolism of the essential branched chain amino acids leucine, isoleucine, and valine.
<b>Tissue specificity</b>	During embryogenesis, expressed in the brain and kidney. Overexpressed in MYC-induced tumors such as Burkitt's lymphoma.
<b>Sequence similarities</b>	Belongs to the class-IV pyridoxal-phosphate-dependent aminotransferase family.
<b>Cellular localization</b>	Cytoplasm.

## Images



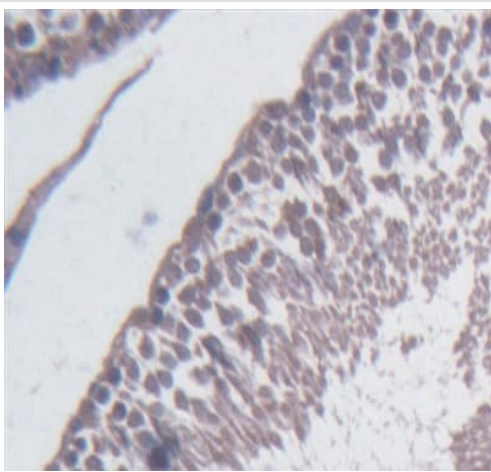
Formalin-fixed, paraffin-embedded rat brain tissue stained for BCAT1 using ab232706 at 20 µg/ml in immunohistochemical analysis. DAB staining.

Immunohistochemistry (Formalin/PFA-fixed paraffin-embedded sections) - Anti-BCAT1 antibody (ab232706)



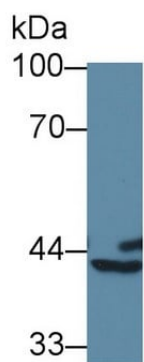
Immunohistochemistry (Formalin/PFA-fixed paraffin-embedded sections) - Anti-BCAT1 antibody (ab232706)

Formalin-fixed, paraffin-embedded rat heart tissue stained for BCAT1 using ab232706 at 20 µg/ml in immunohistochemical analysis. DAB staining.



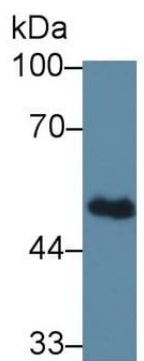
Immunohistochemistry (Formalin/PFA-fixed paraffin-embedded sections) - Anti-BCAT1 antibody (ab232706)

Formalin-fixed, paraffin-embedded rat testis tissue stained for BCAT1 using ab232706 at 20 µg/ml in immunohistochemical analysis. DAB staining.



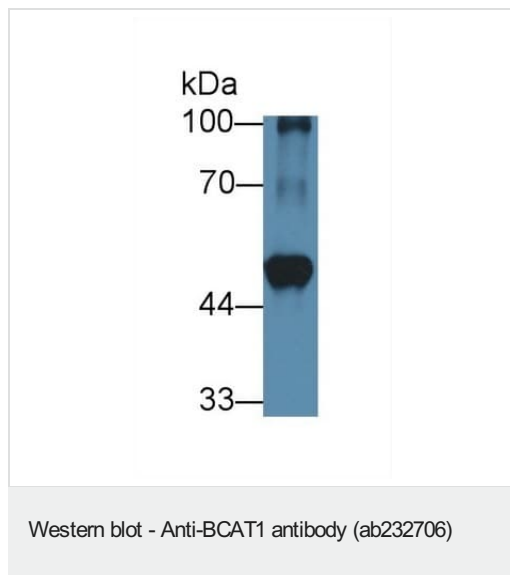
Anti-BCAT1 antibody (ab232706) at 1  $\mu$ g/ml + Mouse cerebrum lysate

Western blot - Anti-BCAT1 antibody (ab232706)

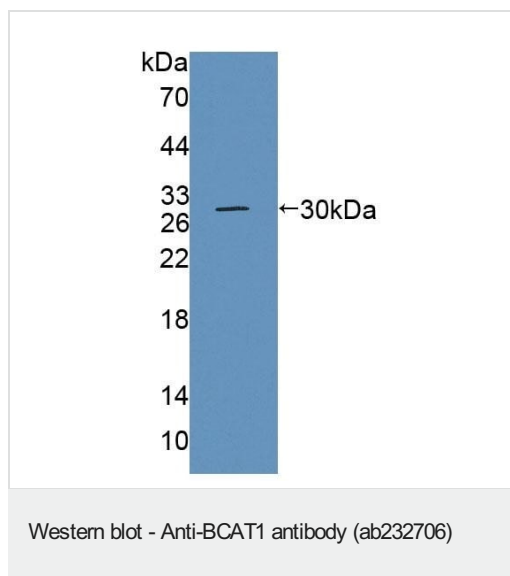


Anti-BCAT1 antibody (ab232706) at 1  $\mu$ g/ml + Rat cerebrum lysate

Western blot - Anti-BCAT1 antibody (ab232706)



Anti-BCAT1 antibody (ab232706) at 1 µg/ml + Mouse heart lysate



Anti-Calcium-independent Phospholipase A2/PLA2G6 antibody (**ab23706**) at 1 µg/ml + Recombinant rat BCAT1 protein

**Please note:** All products are "FOR RESEARCH USE ONLY. NOT FOR USE IN DIAGNOSTIC PROCEDURES"

#### Our Abpromise to you: Quality guaranteed and expert technical support

- Replacement or refund for products not performing as stated on the datasheet
- Valid for 12 months from date of delivery
- Response to your inquiry within 24 hours

- We provide support in Chinese, English, French, German, Japanese and Spanish
- Extensive multi-media technical resources to help you
- We investigate all quality concerns to ensure our products perform to the highest standards

If the product does not perform as described on this datasheet, we will offer a refund or replacement. For full details of the Abpromise, please visit <https://www.abcam.com/abpromise> or contact our technical team.

#### **Terms and conditions**

---

- Guarantee only valid for products bought direct from Abcam or one of our authorized distributors