


Product datasheet

Anti-Bcl10 antibody ab227156

3 Images

Overview

Product name	Anti-Bcl10 antibody
Description	Rabbit polyclonal to Bcl10
Host species	Rabbit
Tested applications	Suitable for: IHC-P, WB
Species reactivity	Reacts with: Mouse, Human Predicted to work with: Rat, Cow, Pig, Rhesus monkey 
Immunogen	Recombinant fragment within Human Bcl10 (internal sequence). The exact sequence is proprietary. Database link: O95999
Positive control	WB: Jurkat, Neuro-2a, GL261 and C8D30 whole cell lysate. IHC-P: Human breast cancer tissue.
General notes	<p>The Life Science industry has been in the grips of a reproducibility crisis for a number of years. Abcam is leading the way in addressing this with our range of recombinant monoclonal antibodies and knockout edited cell lines for gold-standard validation. Please check that this product meets your needs before purchasing.</p> <p>If you have any questions, special requirements or concerns, please send us an inquiry and/or contact our Support team ahead of purchase. Recommended alternatives for this product can be found below, along with publications, customer reviews and Q&As</p>

Properties

Form	Liquid
Storage instructions	Shipped at 4°C. Store at +4°C short term (1-2 weeks). Upon delivery aliquot. Store at -20°C long term. Avoid freeze / thaw cycle.
Storage buffer	pH: 7.00 Preservative: 0.01% Thimerosal (merthiolate) Constituents: 78.99% PBS, 1% BSA, 20% Glycerol (glycerin, glycerine)
Purity	Immunogen affinity purified
Clonality	Polyclonal
Isotype	IgG

Applications

The Abpromise guarantee

Our **Abpromise guarantee** covers the use of ab227156 in the following tested applications.

The application notes include recommended starting dilutions; optimal dilutions/concentrations should be determined by the end user.

Application	Abreviews	Notes
IHC-P		1/100 - 1/1000.
WB		1/500 - 1/3000. Predicted molecular weight: 26 kDa.

Target

Function

Promotes apoptosis, pro-caspase-9 maturation and activation of NF-kappa-B via NIK and IKK. May be an adapter protein between upstream TNFR1-TRADD-RIP complex and the downstream NIK-IKK-IKAP complex. Is a substrate for MALT1.

Tissue specificity

Ubiquitous.

Involvement in disease

Note=A chromosomal aberration involving BCL10 is recurrent in low-grade mucosa-associated lymphoid tissue (MALT lymphoma). Translocation t(1;14)(p22;q32). Although the BCL10/IgH translocation leaves the coding region of BCL10 intact, frequent BCL10 mutations could be attributed to the Ig somatic hypermutation mechanism resulting in nucleotide transitions.
Note=Defects in BCL10 are involved in various types of cancer.

Sequence similarities

Contains 1 CARD domain.

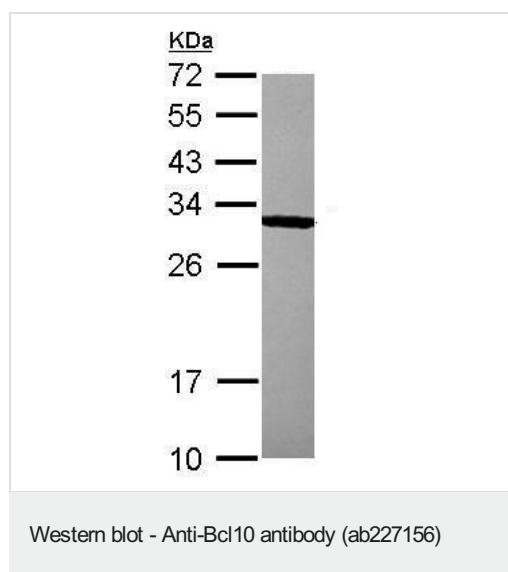
Post-translational modifications

Phosphorylated. Phosphorylation results in dissociation from TRAF2 and binding to BIRC2/c-IAP2.

Cellular localization

Cytoplasm > perinuclear region. Membrane raft. Appears to have a perinuclear, compact and filamentous pattern of expression. Also found in the nucleus of several types of tumor cells. Colocalized with DPP4 in membrane rafts.

Images

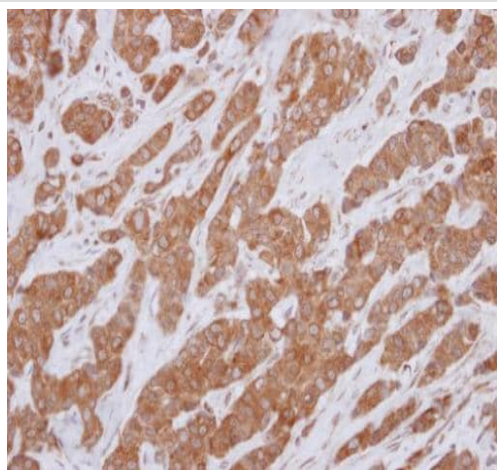


Anti-Bcl10 antibody (ab227156) at 1/1000 dilution + Jurkat (human T cell leukemia cell line from peripheral blood) whole cell lysate at 30 µg

Developed using the ECL technique.

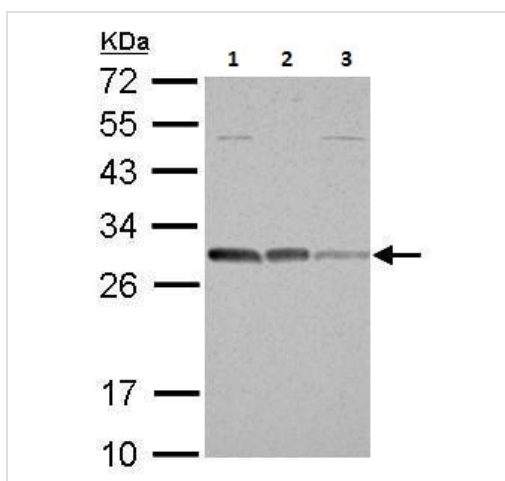
Predicted band size: 26 kDa

12% SDS PAGE



Immunohistochemistry (Formalin/PFA-fixed paraffin-embedded sections) - Anti-Bcl10 antibody (ab227156)

Paraffin-embedded human breast cancer tissue stained for Bcl10 with ab227156 at 1/250 dilution in immunohistochemical analysis.



Western blot - Anti-Bcl10 antibody (ab227156)

All lanes : Anti-Bcl10 antibody (ab227156) at 1/1000 dilution

Lane 1 : Neuro-2A (mouse neuroblastoma cell line) whole cell lysate

Lane 2 : GL261 whole cell lysate

Lane 3 : C8D30 whole cell lysate

Lysates/proteins at 30 µg per lane.

Developed using the ECL technique.

Predicted band size: 26 kDa

12 % SDS-PAGE

Please note: All products are "FOR RESEARCH USE ONLY. NOT FOR USE IN DIAGNOSTIC PROCEDURES"

Our Abpromise to you: Quality guaranteed and expert technical support

- Replacement or refund for products not performing as stated on the datasheet
- Valid for 12 months from date of delivery
- Response to your inquiry within 24 hours
- We provide support in Chinese, English, French, German, Japanese and Spanish
- Extensive multi-media technical resources to help you
- We investigate all quality concerns to ensure our products perform to the highest standards

If the product does not perform as described on this datasheet, we will offer a refund or replacement. For full details of the Abpromise, please visit <https://www.abcam.com/abpromise> or contact our technical team.

Terms and conditions

- Guarantee only valid for products bought direct from Abcam or one of our authorized distributors