

## Product datasheet

# Anti-Bcl10 antibody [EPR3175] ab108328

Recombinant RabMAb

[3 References](#) [3 Images](#)

### Overview

<b>Product name</b>	Anti-Bcl10 antibody [EPR3175]
<b>Description</b>	Rabbit monoclonal [EPR3175] to Bcl10
<b>Host species</b>	Rabbit
<b>Tested applications</b>	<b>Suitable for:</b> ICC/IF, WB <b>Unsuitable for:</b> Flow Cyt or IHC-P
<b>Species reactivity</b>	<b>Reacts with:</b> Human
<b>Immunogen</b>	Synthetic peptide. This information is proprietary to Abcam and/or its suppliers.
<b>Positive control</b>	Daudi, Raji, HeLa, and HuT-78 cell lysates; HeLa cells
<b>General notes</b>	<p>This product is a recombinant monoclonal antibody, which offers several advantages including:</p> <ul style="list-style-type: none"><li>- High batch-to-batch consistency and reproducibility</li><li>- Improved sensitivity and specificity</li><li>- Long-term security of supply</li><li>- Animal-free production</li></ul> <p>For more information <a href="#">see here</a>.</p> <p>Our RabMAb<sup>®</sup> technology is a patented hybridoma-based technology for making rabbit monoclonal antibodies. For details on our patents, please refer to <a href="#">RabMAb<sup>®</sup> patents</a>.</p> <p>Mouse, Rat: We have preliminary internal testing data to indicate this antibody may not react with these species. Please contact us for more information.</p>

### Properties

<b>Form</b>	Liquid
<b>Storage instructions</b>	Shipped at 4°C. Store at -20°C. Stable for 12 months at -20°C.
<b>Storage buffer</b>	pH: 7.20 Preservative: 0.05% Sodium azide Constituents: 0.1% BSA, 40% Glycerol (glycerin, glycerine), 9.85% Tris glycine, 50% Tissue culture supernatant
<b>Purity</b>	Tissue culture supernatant
<b>Clonality</b>	Monoclonal

**Clone number**                      EPR3175  
**Isotype**                                IgG

## Applications

---

**The Abpromise guarantee**        Our **Abpromise guarantee** covers the use of ab108328 in the following tested applications. The application notes include recommended starting dilutions; optimal dilutions/concentrations should be determined by the end user.

Application	Abreviews	Notes
ICC/IF		1/100 - 1/250.
WB		1/1000 - 1/10000. Detects a band of approximately 32 kDa (predicted molecular weight: 26 kDa).

**Application notes**                      Is unsuitable for Flow Cyt or IHC-P.

## Target

---

**Function**                                Promotes apoptosis, pro-caspase-9 maturation and activation of NF-kappa-B via NIK and IKK. May be an adapter protein between upstream TNFR1-TRADD-RIP complex and the downstream NIK-IKK-IKAP complex. Is a substrate for MALT1.

**Tissue specificity**                      Ubiquitous.

**Involvement in disease**                Note=A chromosomal aberration involving BCL10 is recurrent in low-grade mucosa-associated lymphoid tissue (MALT lymphoma). Translocation t(1;14)(p22;q32). Although the BCL10/IgH translocation leaves the coding region of BCL10 intact, frequent BCL10 mutations could be attributed to the Ig somatic hypermutation mechanism resulting in nucleotide transitions.  
Note=Defects in BCL10 are involved in various types of cancer.

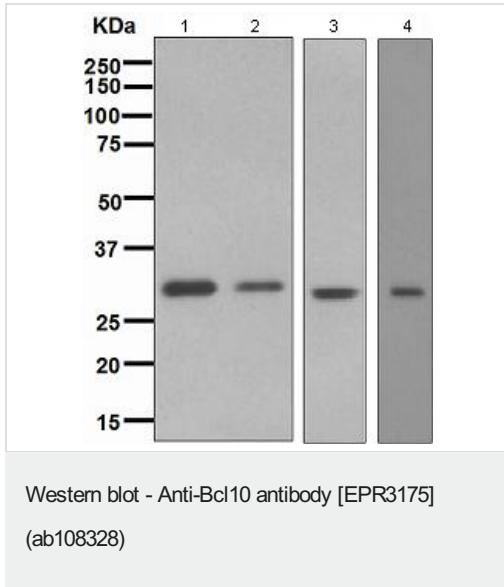
**Sequence similarities**                      Contains 1 CARD domain.

**Post-translational modifications**        Phosphorylated. Phosphorylation results in dissociation from TRAF2 and binding to BIRC2/c-IAP2.

**Cellular localization**                      Cytoplasm > perinuclear region. Membrane raft. Appears to have a perinuclear, compact and filamentous pattern of expression. Also found in the nucleus of several types of tumor cells. Colocalized with DPP4 in membrane rafts.

## Images

---



**All lanes :** Anti-Bcl10 antibody [EPR3175] (ab108328) at 1/1000 dilution

**Lane 1 :** Daudi cell lysate

**Lane 2 :** Raji cell lysate

**Lane 3 :** HeLa cell lysate

**Lane 4 :** HuT-78 cell lysate

Lysates/proteins at 10  $\mu$ g per lane.

**Predicted band size:** 26 kDa



ab108328, at 1/100 dilution, staining Bcl10 in HeLa cells by Immunofluorescence.

Why choose a recombinant antibody?



**Research with confidence**  
Consistent and reproducible results

**Long-term and scalable supply**  
Recombinant technology

**Success from the first experiment**  
Confirmed specificity

**Ethical standards compliant**  
Animal-free production

Anti-Bcl10 antibody [EPR3175] (ab108328)

**Please note:** All products are "FOR RESEARCH USE ONLY. NOT FOR USE IN DIAGNOSTIC PROCEDURES"

### Our Abpromise to you: Quality guaranteed and expert technical support

---

- Replacement or refund for products not performing as stated on the datasheet
- Valid for 12 months from date of delivery
- Response to your inquiry within 24 hours
- We provide support in Chinese, English, French, German, Japanese and Spanish
- Extensive multi-media technical resources to help you
- We investigate all quality concerns to ensure our products perform to the highest standards

If the product does not perform as described on this datasheet, we will offer a refund or replacement. For full details of the Abpromise, please visit <https://www.abcam.com/abpromise> or contact our technical team.

### Terms and conditions

---

- Guarantee only valid for products bought direct from Abcam or one of our authorized distributors