



# Anti-Beclin 1 antibody ab217179

[11 References](#) [7 Images](#)

## Overview

<b>Product name</b>	Anti-Beclin 1 antibody
<b>Description</b>	Rabbit polyclonal to Beclin 1
<b>Host species</b>	Rabbit
<b>Tested applications</b>	<b>Suitable for:</b> WB, IHC-P, ICC/IF
<b>Species reactivity</b>	<b>Reacts with:</b> Mouse, Rat, Human
<b>Immunogen</b>	Synthetic peptide within Human Beclin 1 aa 200-300 conjugated to keyhole limpet haemocyanin. The exact immunogen sequence used to generate this antibody is proprietary information. If additional detail on the immunogen is needed to determine the suitability of the antibody for your needs, please <a href="#">contact</a> our Scientific Support team to discuss your requirements. Database link: <a href="#">Q14457</a>
	 <a href="#">Run BLAST with</a>  <a href="#">Run BLAST with</a>
<b>Positive control</b>	Mouse intestine lysates; rat kidney, rat brain and rat stomach tissues; 293T lysates; U138 and SMMC7721 cells.
<b>General notes</b>	<p>The Life Science industry has been in the grips of a reproducibility crisis for a number of years. Abcam is leading the way in addressing this with our range of recombinant monoclonal antibodies and knockout edited cell lines for gold-standard validation. Please check that this product meets your needs before purchasing.</p> <p>If you have any questions, special requirements or concerns, please send us an inquiry and/or contact our Support team ahead of purchase. Recommended alternatives for this product can be found below, along with publications, customer reviews and Q&amp;As</p>

## Properties

<b>Form</b>	Liquid
<b>Storage instructions</b>	Shipped at 4°C. Store at +4°C short term (1-2 weeks). Upon delivery aliquot. Store at -20°C long term. Avoid freeze / thaw cycle.
<b>Storage buffer</b>	pH: 7.40 Preservative: 0.02% Proclin 300 Constituents: 50% Glycerol (glycerin, glycerine), 1% BSA, 48.98% TBS, 1X
	Aqueous buffered solution
<b>Purity</b>	Protein A purified

<b>Clonality</b>	Polyclonal
<b>Isotype</b>	IgG

## Applications

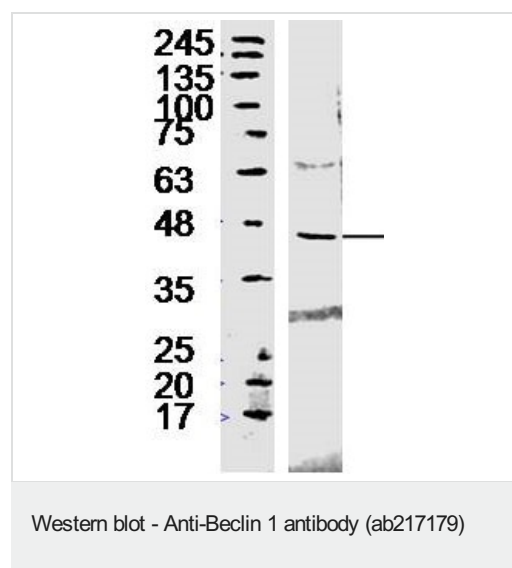
**The Abpromise guarantee** Our **Abpromise guarantee** covers the use of ab217179 in the following tested applications. The application notes include recommended starting dilutions; optimal dilutions/concentrations should be determined by the end user.

Application	Abreviews	Notes
<b>WB</b>		1/100 - 1/1000. Predicted molecular weight: 52 kDa.
<b>IHC-P</b>		1/100 - 1/500. When using a fluorescent probe the recommended dilution is 1/50 – 1/200.
<b>ICC/IF</b>		1/50 - 1/200.

## Target

<b>Function</b>	Plays a central role in autophagy (By similarity). May play a role in antiviral host defense. Protects against infection by a neurovirulent strain of Sindbis virus.
<b>Tissue specificity</b>	Ubiquitous.
<b>Sequence similarities</b>	Belongs to the beclin family.
<b>Cellular localization</b>	Golgi apparatus > trans-Golgi network membrane. Interaction with ATG14 promotes translocation to autophagosomes. Expressed in dendrites and cell bodies of cerebellar Purkinje cells.

## Images

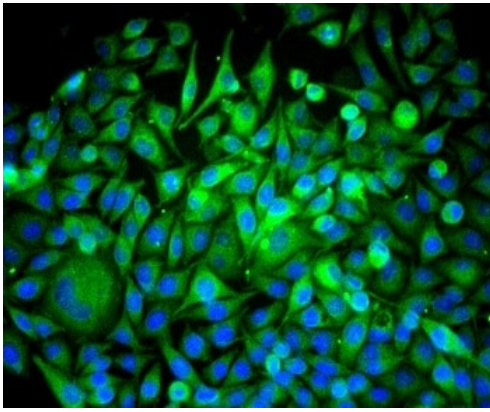


Anti-Beclin 1 antibody (ab217179) at 1/300 dilution + 293T lysate

### Secondary

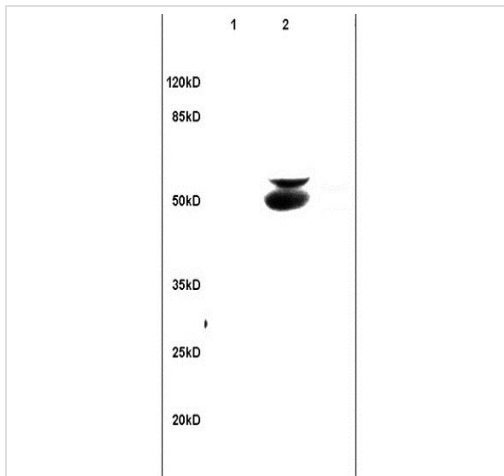
Goat Anti-Rabbit IgG Antibody (H+L), HRP at 1/5000 dilution

**Predicted band size:** 52 kDa



Immunocytochemistry/ Immunofluorescence - Anti-Beclin 1 antibody (ab217179)

Immunofluorescent analysis of SMMC7721 cells labeling Beclin 1 with ab217179 at 1/50 dilution followed by Goat Anti-Rabbit IgG (H+L) Alexa Fluor 488 Conjugated secondary antibody.



Western blot - Anti-Beclin 1 antibody (ab217179)

**All lanes :** Anti-Beclin 1 antibody (ab217179) at 1/200 dilution

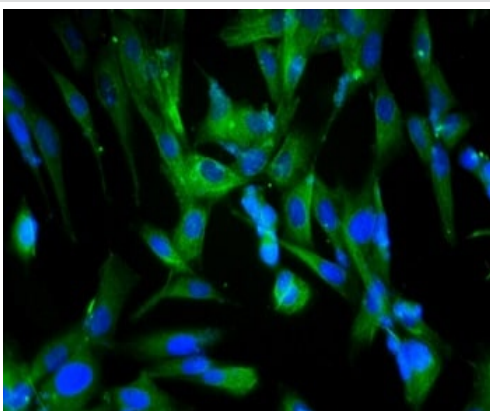
**Lane 1 :** mouse brain lysates

**Lane 2 :** mouse intestine lysates

#### Secondary

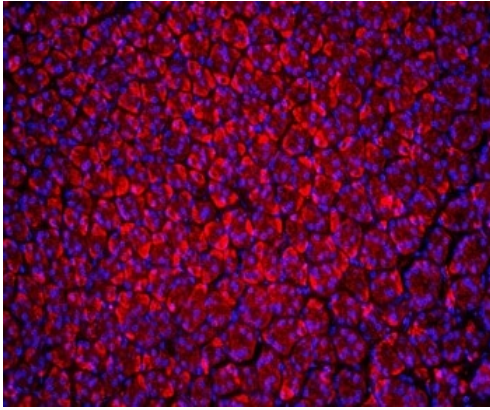
**All lanes :** Goat Anti-Rabbit IgG Antibody (H+L), HRP at 1/3000 dilution

**Predicted band size:** 52 kDa



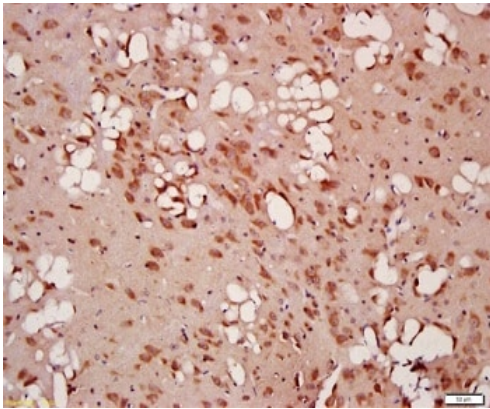
Immunocytochemistry/ Immunofluorescence - Anti-Beclin 1 antibody (ab217179)

Immunofluorescent analysis of U138 cells labeling Beclin 1 with ab217179 at 1/100 dilution followed by Goat Anti-Rabbit IgG (H+L) Alexa Fluor 488 Conjugated secondary antibody.



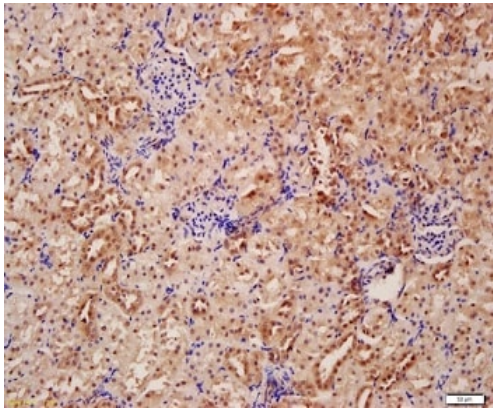
Immunohistochemistry (Formalin/PFA-fixed paraffin-embedded sections) - Anti-Beclin 1 antibody (ab217179)

Immunohistochemical analysis of formalin-fixed and paraffin-embedded rat stomach tissue labeling Beclin 1 with ab217179 at 1/200 dilution, followed by conjugation to the secondary antibody (Goat Anti-Rabbit IgG, Cy3 conjugated) at 1/200 dilution.



Immunohistochemistry (Formalin/PFA-fixed paraffin-embedded sections) - Anti-Beclin 1 antibody (ab217179)

Immunohistochemical analysis of formalin-fixed and paraffin-embedded rat brain tissue labeling Beclin 1 with ab217179 at 1/200 dilution, followed by conjugation to the secondary antibody and DAB staining.



Immunohistochemistry (Formalin/PFA-fixed paraffin-embedded sections) - Anti-Beclin 1 antibody (ab217179)

Immunohistochemical analysis of formalin-fixed and paraffin-embedded rat kidney tissue labeling Beclin 1 with ab217179 at 1/200 dilution, followed by conjugation to the secondary antibody and DAB staining.

**Please note:** All products are "FOR RESEARCH USE ONLY. NOT FOR USE IN DIAGNOSTIC PROCEDURES"

### Our Abpromise to you: Quality guaranteed and expert technical support

---

- Replacement or refund for products not performing as stated on the datasheet
- Valid for 12 months from date of delivery
- Response to your inquiry within 24 hours
- We provide support in Chinese, English, French, German, Japanese and Spanish
- Extensive multi-media technical resources to help you
- We investigate all quality concerns to ensure our products perform to the highest standards

If the product does not perform as described on this datasheet, we will offer a refund or replacement. For full details of the Abpromise, please visit <https://www.abcam.com/abpromise> or contact our technical team.

### Terms and conditions

---

- Guarantee only valid for products bought direct from Abcam or one of our authorized distributors