

Product datasheet

Anti-Beclin 1 antibody [EPR19662] ab207612

Recombinant RabMAb

★★★★★ **10 Abreviews** **217 References** **6 Images**

Overview

Product name	Anti-Beclin 1 antibody [EPR19662]
Description	Rabbit monoclonal [EPR19662] to Beclin 1
Host species	Rabbit
Tested applications	Suitable for: WB, IP
Species reactivity	Reacts with: Mouse, Rat, Human
Immunogen	Recombinant fragment. This information is proprietary to Abcam and/or its suppliers.
Positive control	WB: Human fetal brain, fetal heart and fetal kidney lysates; HeLa, HepG2, HEK-293, MCF7, Jurkat, Raji, C6, RAW264.7, PC-12, NIH/3T3, A20 and C2C12 whole cell lysates; rat brain, kidney and spleen lysates; mouse brain, heart and spleen lysates. IP: HeLa whole cell lysate.
General notes	<p>This product is a recombinant monoclonal antibody, which offers several advantages including:</p> <ul style="list-style-type: none"> - High batch-to-batch consistency and reproducibility - Improved sensitivity and specificity - Long-term security of supply - Animal-free production <p>For more information see here.</p> <p>Our RabMAb[®] technology is a patented hybridoma-based technology for making rabbit monoclonal antibodies. For details on our patents, please refer to RabMAb[®] patents.</p>

Properties

Form	Liquid
Storage instructions	Shipped at 4°C. Store at +4°C short term (1-2 weeks). Upon delivery aliquot. Store at -20°C long term. Avoid freeze / thaw cycle.
Storage buffer	<p>pH: 7.2</p> <p>Preservative: 0.01% Sodium azide</p> <p>Constituents: 59% PBS, 40% Glycerol, 0.05% BSA</p>
Purity	Protein A purified
Clonality	Monoclonal
Clone number	EPR19662

Isotype

IgG

Applications

The Abpromise guarantee

Our **Abpromise guarantee** covers the use of ab207612 in the following tested applications.

The application notes include recommended starting dilutions; optimal dilutions/concentrations should be determined by the end user.

Application	Abreviews	Notes
WB	★★★★★ (6)	1/2000. Detects a band of approximately 52 kDa (predicted molecular weight: 52 kDa).
IP	★★★★★ (1)	1/30.

Target

Function

Plays a central role in autophagy (By similarity). May play a role in antiviral host defense. Protects against infection by a neurovirulent strain of Sindbis virus.

Tissue specificity

Ubiquitous.

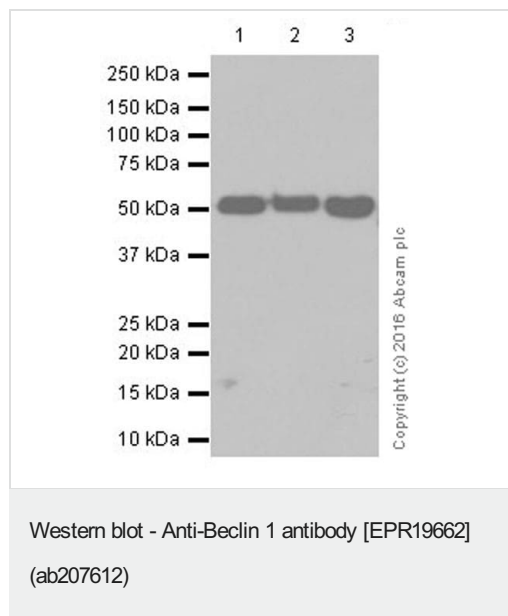
Sequence similarities

Belongs to the beclin family.

Cellular localization

Golgi apparatus > trans-Golgi network membrane. Interaction with ATG14 promotes translocation to autophagosomes. Expressed in dendrites and cell bodies of cerebellar Purkinje cells.

Images



All lanes : Anti-Beclin 1 antibody [EPR19662] (ab207612) at 1/2000 dilution

Lane 1 : Human fetal brain lysate

Lane 2 : Human fetal heart lysate

Lane 3 : Human fetal kidney lysate

Lysates/proteins at 10 µg per lane.

Secondary

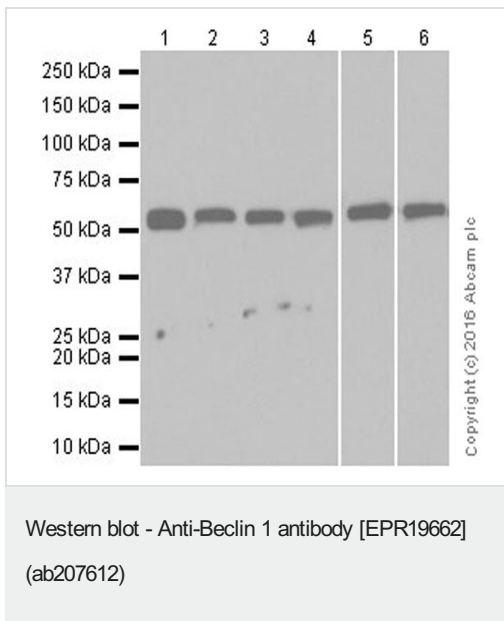
All lanes : Goat Anti-Rabbit IgG Peroxidase Conjugate, specific to the non-reduced form of IgG at 1/10000 dilution

Predicted band size: 52 kDa

Observed band size: 52 kDa

Exposure time: 30 seconds

Blocking/Dilution buffer: 5% NFDM/TBST.



All lanes : Anti-Beclin 1 antibody [EPR19662] (ab207612) at 1/5000 dilution

Lane 1 : HeLa (Human epithelial cell line from cervix adenocarcinoma) whole cell lysate

Lane 2 : HepG2 (Human liver hepatocellular carcinoma cell line) whole cell lysate

Lane 3 : HEK-293 (Human epithelial cell line from embryonic kidney) whole cell lysate

Lane 4 : MCF7 (Human breast adenocarcinoma cell line) whole cell lysate

Lane 5 : Jurkat (Human T cell leukemia cell line from peripheral blood) whole cell lysate

Lane 6 : Raji (Human Burkitt's lymphoma cell line) whole cell lysate

Lysates/proteins at 10 µg per lane.

Secondary

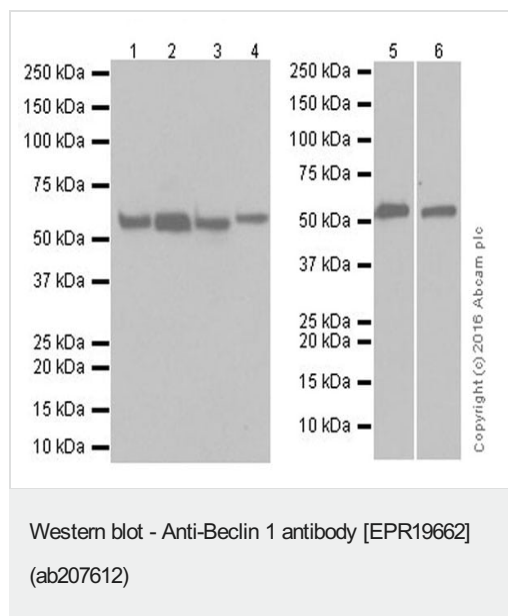
All lanes : Goat Anti-Rabbit IgG H&L (HRP) ([ab97051](#)) at 1/100000 dilution

Predicted band size: 52 kDa

Observed band size: 52 kDa

Blocking/Dilution buffer: 5% NFDM/TBST.

Exposure time: Lane 1-4: 30 seconds; Lane 5: 15 seconds; Lane 6: 15 seconds.



Lanes 1-4 : Anti-Beclin 1 antibody [EPR19662] (ab207612) at 1/2000 dilution

Lanes 5-6 : Anti-Beclin 1 antibody [EPR19662] (ab207612) at 1/5000 dilution

Lane 1 : C6 (Rat glial tumor cell line) whole cell lysate

Lane 2 : RAW 264.7 (Mouse macrophage cell line transformed with Abelson murine leukemia virus) whole cell lysate

Lane 3 : PC-12 (Rat adrenal gland pheochromocytoma cell line) whole cell lysate

Lane 4 : NIH/3T3 (Mouse embryonic fibroblast cell line) whole cell lysate

Lane 5 : A20 (Mouse reticulum sarcoma cell line) whole cell lysate

Lane 6 : C2C12 (Mouse myoblast cell line) whole cell lysate

Lysates/proteins at 10 µg per lane.

Secondary

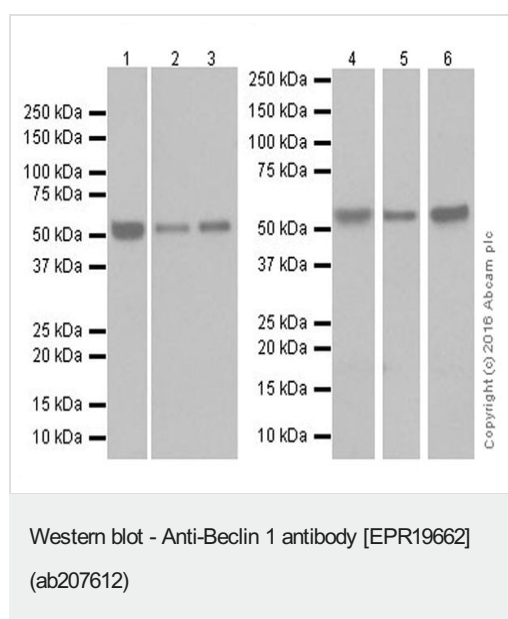
All lanes : Goat Anti-Rabbit IgG, (H+L), Peroxidase at 1/100000 dilution

Predicted band size: 52 kDa

Observed band size: 52 kDa

Blocking/Dilution buffer: 5% NFDM/TBST.

Exposure time: Lane 1-4: 5 seconds; Lane 5: 10 seconds; Lane 6: 30 seconds.



All lanes : Anti-Beclin 1 antibody [EPR19662] (ab207612) at 1/2000 dilution

Lane 1 : Rat brain lysate

Lane 2 : Rat kidney lysate

Lane 3 : Rat spleen lysate

Lane 4 : Mouse brain lysate

Lane 5 : Mouse heart lysate

Lane 6 : Mouse spleen lysate

Lysates/proteins at 10 µg per lane.

Secondary

All lanes : Goat Anti-Rabbit IgG H&L (HRP) (**ab97051**) at

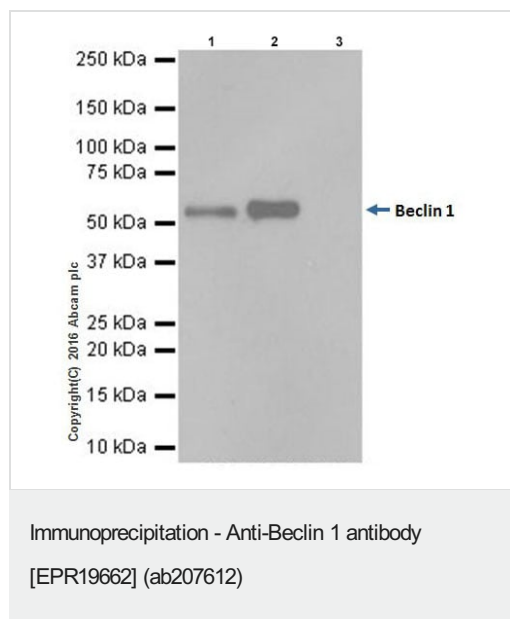
1/100000 dilution

Predicted band size: 52 kDa

Observed band size: 52 kDa

Blocking/Dilution buffer: 5% NFDM/TBST.

Exposure time: Lane 1/6: 5 seconds; Lane 2/3: 15 seconds; Lane 4: 3 seconds; Lane 5: 10 seconds.



Beclin 1 was immunoprecipitated from 0.35 mg of HeLa (Human epithelial cell line from cervix adenocarcinoma) whole cell lysate with ab207612 at 1/30 dilution.

Western blot was performed from the immunoprecipitate using ab207612 at 1/1000 dilution.

VeriBlot for IP Detection Reagent (HRP) ([ab131366](#)), was used for detection at 1/10000 dilution.

Lane 1: HeLa whole cell lysate 10µg (Input).

Lane 2: ab207612 IP in HeLa whole cell lysate.

Lane 3: Rabbit monoclonal IgG ([ab172730](#)) instead of ab207612 in HeLa whole cell lysate.

Blocking and dilution buffer and concentration: 5% NFDM/TBST.

Exposure time: 30 seconds.

Why choose a recombinant antibody?

 <p>Research with confidence Consistent and reproducible results</p>	 <p>Long-term and scalable supply Recombinant technology</p>
 <p>Success from the first experiment Confirmed specificity</p>	 <p>Ethical standards compliant Animal-free production</p>

Anti-Beclin 1 antibody [EPR19662] (ab207612)

Please note: All products are "FOR RESEARCH USE ONLY. NOT FOR USE IN DIAGNOSTIC PROCEDURES"

Our Abpromise to you: Quality guaranteed and expert technical support

- Replacement or refund for products not performing as stated on the datasheet
- Valid for 12 months from date of delivery
- Response to your inquiry within 24 hours

- We provide support in Chinese, English, French, German, Japanese and Spanish
- Extensive multi-media technical resources to help you
- We investigate all quality concerns to ensure our products perform to the highest standards

If the product does not perform as described on this datasheet, we will offer a refund or replacement. For full details of the Abpromise, please visit <https://www.abcam.com/abpromise> or contact our technical team.

Terms and conditions

- Guarantee only valid for products bought direct from Abcam or one of our authorized distributors