


Product datasheet

Anti-Beclin 1 (phospho S295) antibody ab183313

[3 References](#) [1 Image](#)

Overview

Product name	Anti-Beclin 1 (phospho S295) antibody
Description	Rabbit polyclonal to Beclin 1 (phospho S295)
Host species	Rabbit
Specificity	ab183313 only detects Beclin 1 when phosphorylated at serine 295. Immunolabeling of the Beclin 1 band is eliminated in the Beclin 1 alanine substitution mutant. Additional bands may be observed in non-immunoprecipitated lysates.
Tested applications	Suitable for: WB
Species reactivity	Reacts with: Human Predicted to work with: Mouse, Sheep, Chicken, Cow, Dog, Xenopus laevis, Non human primates, Zebrafish 
Immunogen	Synthetic peptide corresponding to Human Beclin 1 (phospho S295). Database link: Q14457
Positive control	DDDDK Beclin 1 WT immunoprecipitates expressed in 293T cells.
General notes	<p>The Life Science industry has been in the grips of a reproducibility crisis for a number of years. Abcam is leading the way in addressing this with our range of recombinant monoclonal antibodies and knockout edited cell lines for gold-standard validation. Please check that this product meets your needs before purchasing.</p> <p>If you have any questions, special requirements or concerns, please send us an inquiry and/or contact our Support team ahead of purchase. Recommended alternatives for this product can be found below, along with publications, customer reviews and Q&As</p>

Properties

Form	Liquid
Storage instructions	Shipped at 4°C. Store at +4°C short term (1-2 weeks). Upon delivery aliquot. Store at -20°C long term. Avoid freeze / thaw cycle.
Storage buffer	pH: 7.50 Constituents: 0.24% HEPES, 0.88% Sodium chloride, 50% Glycerol, 0.01% BSA
Purity	Immunogen affinity purified
Purification notes	ab183313 was prepared from rabbit serum by affinity purification via sequential chromatography on phospho- and dephosphopeptide affinity columns

Clonality Polyclonal

Isotype IgG

Applications

The Abpromise guarantee Our **Abpromise guarantee** covers the use of ab183313 in the following tested applications. The application notes include recommended starting dilutions; optimal dilutions/concentrations should be determined by the end user.

Application	Abreviews	Notes
WB		1/250. Predicted molecular weight: 52 kDa.

Target

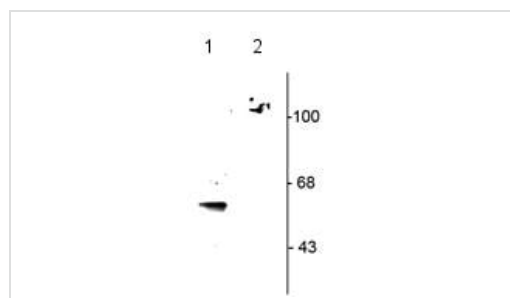
Function Plays a central role in autophagy (By similarity). May play a role in antiviral host defense. Protects against infection by a neurovirulent strain of Sindbis virus.

Tissue specificity Ubiquitous.

Sequence similarities Belongs to the beclin family.

Cellular localization Golgi apparatus > trans-Golgi network membrane. Interaction with ATG14 promotes translocation to autophagosomes. Expressed in dendrites and cell bodies of cerebellar Purkinje cells.

Images



Western blot - Anti-Beclin 1 (phospho S295) antibody (ab183313)

All lanes : Anti-Beclin 1 (phospho S295) antibody (ab183313) at 1/250 dilution

Lane 1 : DDDDK Beclin 1 WT immunoprecipitates expressed in 293T cells

Lane 2 : DDDDK Beclin 1 alanine-substitution mutant (S295A) immunoprecipitates expressed in 293T cells

Predicted band size: 52 kDa

Please note: All products are "FOR RESEARCH USE ONLY. NOT FOR USE IN DIAGNOSTIC PROCEDURES"

Our Abpromise to you: Quality guaranteed and expert technical support

- Replacement or refund for products not performing as stated on the datasheet
- Valid for 12 months from date of delivery
- Response to your inquiry within 24 hours

- We provide support in Chinese, English, French, German, Japanese and Spanish
- Extensive multi-media technical resources to help you
- We investigate all quality concerns to ensure our products perform to the highest standards

If the product does not perform as described on this datasheet, we will offer a refund or replacement. For full details of the Abpromise, please visit <https://www.abcam.com/abpromise> or contact our technical team.

Terms and conditions

- Guarantee only valid for products bought direct from Abcam or one of our authorized distributors