


Product datasheet

Anti-beta 1 Adrenergic Receptor antibody ab85037

★★★★☆ [4 Abreviews](#) [4 References](#) [2 Images](#)

Overview

Product name	Anti-beta 1 Adrenergic Receptor antibody
Description	Rabbit polyclonal to beta 1 Adrenergic Receptor
Host species	Rabbit
Specificity	From Jan 2024, QC testing of replenishment batches of this polyclonal changed. All tested and expected application and reactive species combinations are still covered by our Abcam product promise. However, we no longer test all applications. For more information on a specific batch, please contact our Scientific Support who will be happy to help.
Tested applications	Suitable for: ICC/IF, WB
Species reactivity	Reacts with: Mouse, Human Predicted to work with: Sheep, Cow, Cat, Pig 
Immunogen	Synthetic peptide corresponding to Mouse beta 1 Adrenergic Receptor aa 150-250 conjugated to keyhole limpet haemocyanin. (Peptide available as ab97424)
Positive control	This antibody gave a positive signal in Mouse Spinal cord tissue lysate. ICC/IF: THP-1 cells
General notes	<p>The Life Science industry has been in the grips of a reproducibility crisis for a number of years. Abcam is leading the way in addressing this with our range of recombinant monoclonal antibodies and knockout edited cell lines for gold-standard validation. Please check that this product meets your needs before purchasing.</p> <p>If you have any questions, special requirements or concerns, please send us an inquiry and/or contact our Support team ahead of purchase. Recommended alternatives for this product can be found below, along with publications, customer reviews and Q&As</p>

Properties

Form	Liquid
Storage instructions	Shipped at 4°C. Store at +4°C short term (1-2 weeks). Upon delivery aliquot. Store at -20°C or -80°C. Avoid freeze / thaw cycle.
Storage buffer	pH: 7.40 Preservative: 0.02% Sodium azide Constituent: PBS

Batches of this product that have a concentration < 1mg/ml may have BSA added as a stabilising agent. If you would like information about the formulation of a specific lot, please contact our scientific support team who will be happy to help.

Purity	Immunogen affinity purified
Clonality	Polyclonal
Isotype	IgG

Applications

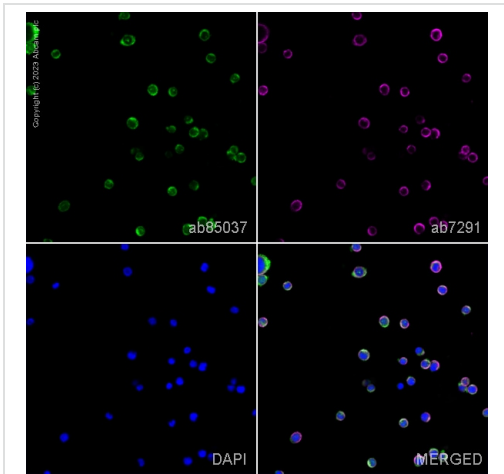
The Abpromise guarantee Our **Abpromise guarantee** covers the use of ab85037 in the following tested applications. The application notes include recommended starting dilutions; optimal dilutions/concentrations should be determined by the end user.

Application	Abreviews	Notes
ICC/IF	★★★★☆ (1)	Use a concentration of 5 µg/ml.
WB	★★★★☆ (2)	Use a concentration of 1 µg/ml. Detects a band of approximately 55 kDa (predicted molecular weight: 51 kDa).

Target

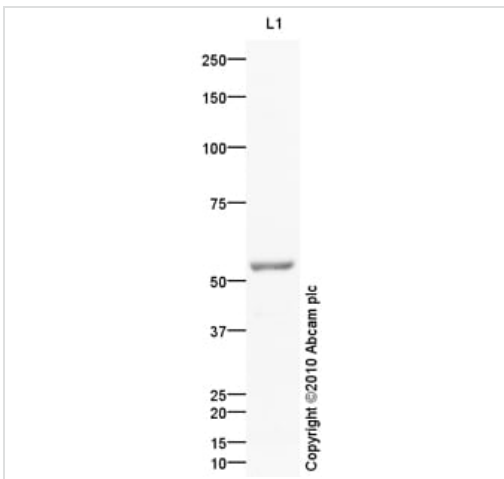
Function	Beta-adrenergic receptors mediate the catecholamine-induced activation of adenylate cyclase through the action of G proteins. This receptor binds epinephrine and norepinephrine with approximately equal affinity.
Sequence similarities	Belongs to the G-protein coupled receptor 1 family. Adrenergic receptor subfamily. ADRB1 subfamily.
Domain	The PDZ domain-binding motif mediates competitive interactions with GOPC, MAGI3 and DLG4 and plays a role in subcellular location of the receptor.
Post-translational modifications	Homologous desensitization of the receptor is mediated by its phosphorylation by beta-adrenergic receptor kinase.
Cellular localization	Cell membrane. Localized at the plasma membrane. Found in the Golgi upon GOPC overexpression.

Images



Immunocytochemistry/ Immunofluorescence - Anti-beta 1 Adrenergic Receptor antibody (ab85037)

ab85037 staining beta 1 Adrenergic Receptor in THP-1 cells. The cells were fixed with 100% methanol (5 min), permeabilized with 0.1% PBS-Tween for 5 minutes and then blocked with 1% BSA/10% normal goat serum/0.3M glycine in 0.1%PBS-Tween for 1h. The cells were then incubated overnight at 4°C with ab85037 at 5µg/ml and **ab7291**, Mouse monoclonal [DM1A] to alpha Tubulin - Loading Control. Cells were then incubated with **ab150081**, Goat polyclonal Secondary Antibody to Rabbit IgG - H&L (Alexa Fluor® 488), pre-adsorbed at 1/1000 dilution (shown in green) and **ab150120**, Goat polyclonal Secondary Antibody to Mouse IgG - H&L (Alexa Fluor® 594), pre-adsorbed at 1/1000 dilution (shown in pseudocolour magenta). Nuclear DNA was labelled with DAPI (shown in blue). Image was acquired with a confocal microscope (Leica-Microsystems TCS SP8) and a single confocal section is shown.



Western blot - Anti-beta 1 Adrenergic Receptor antibody (ab85037)

Anti-beta 1 Adrenergic Receptor antibody (ab85037) at 1 µg/ml + Spinal Cord (Mouse) Tissue Lysate at 10 µg

Secondary

Goat polyclonal to Rabbit IgG - H&L - Pre-Adsorbed at 1/3000 dilution

Developed using the ECL technique.

Performed under reducing conditions.

Predicted band size: 51 kDa

Observed band size: 55 kDa

Exposure time: 20 minutes

Mouse Beta-1 adrenergic receptor contains a potential

glycosylation site (SwissProt) which may explain its migration at a higher molecular weight than predicted.

Please note: All products are "FOR RESEARCH USE ONLY. NOT FOR USE IN DIAGNOSTIC PROCEDURES"

Our Abpromise to you: Quality guaranteed and expert technical support

- Replacement or refund for products not performing as stated on the datasheet
- Valid for 12 months from date of delivery
- Response to your inquiry within 24 hours

- We provide support in Chinese, English, French, German, Japanese and Spanish
- Extensive multi-media technical resources to help you
- We investigate all quality concerns to ensure our products perform to the highest standards

If the product does not perform as described on this datasheet, we will offer a refund or replacement. For full details of the Abpromise, please visit <https://www.abcam.com/abpromise> or contact our technical team.

Terms and conditions

- Guarantee only valid for products bought direct from Abcam or one of our authorized distributors