




## Product datasheet

# Anti-beta 2 Microglobulin antibody ab223571

1 Image

### Overview

<b>Product name</b>	Anti-beta 2 Microglobulin antibody
<b>Description</b>	Goat polyclonal to beta 2 Microglobulin
<b>Host species</b>	Goat
<b>Tested applications</b>	<b>Suitable for:</b> WB
<b>Species reactivity</b>	<b>Reacts with:</b> Human <b>Predicted to work with:</b> Cow, Chimpanzee, Cynomolgus monkey, Rhesus monkey, Gorilla 
<b>Immunogen</b>	Synthetic peptide corresponding to Human beta 2 Microglobulin aa 1-100 (N terminal) (Cysteine residue). (NP_004039.1). Database link: <a href="#">P61769</a>  <a href="#">Run BLAST with</a>  <a href="#">Run BLAST with</a>
<b>Positive control</b>	WB: Human duodenum lysate.
<b>General notes</b>	<p>The Life Science industry has been in the grips of a reproducibility crisis for a number of years. Abcam is leading the way in addressing this with our range of recombinant monoclonal antibodies and knockout edited cell lines for gold-standard validation. Please check that this product meets your needs before purchasing.</p> <p>If you have any questions, special requirements or concerns, please send us an inquiry and/or contact our Support team ahead of purchase. Recommended alternatives for this product can be found below, along with publications, customer reviews and Q&amp;As</p>

### Properties

<b>Form</b>	Liquid
<b>Storage instructions</b>	Shipped at 4°C. Store at +4°C short term (1-2 weeks). Upon delivery aliquot. Store at -20°C long term. Avoid freeze / thaw cycle.
<b>Storage buffer</b>	pH: 7.30 Preservative: 0.02% Sodium azide Constituents: 0.5% BSA, Tris buffered saline
<b>Purity</b>	Immunogen affinity purified
<b>Purification notes</b>	ab223571 was purified from goat serum by ammonium sulphate precipitation followed by antigen affinity chromatography using the immunizing peptide.

<b>Clonality</b>	Polyclonal
<b>Isotype</b>	IgG

## Applications

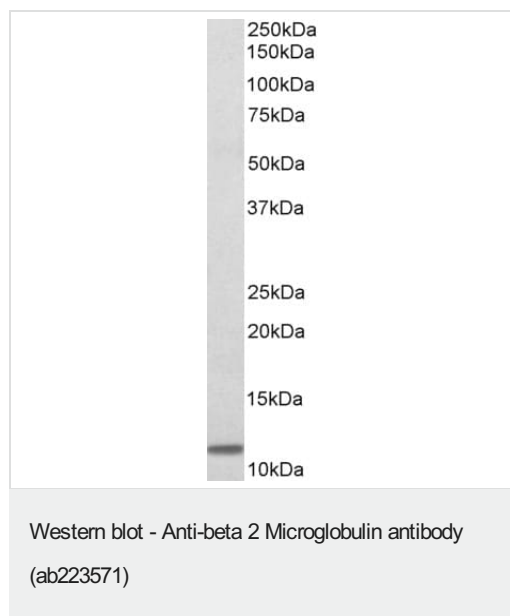
**The Abpromise guarantee** Our **Abpromise guarantee** covers the use of ab223571 in the following tested applications. The application notes include recommended starting dilutions; optimal dilutions/concentrations should be determined by the end user.

Application	Abreviews	Notes
<b>WB</b>		Use a concentration of 0.3 - 1 µg/ml. Detects a band of approximately 12 kDa (predicted molecular weight: 14 kDa). 1 hour primary incubation is recommended for this product.

## Target

<b>Function</b>	Component of the class I major histocompatibility complex (MHC). Involved in the presentation of peptide antigens to the immune system.
<b>Involvement in disease</b>	Defects in B2M are the cause of hypercatabolic hypoproteinemia (HYCATHYP) [MIM:241600]. Affected individuals show marked reduction in serum concentrations of immunoglobulin and albumin, probably due to rapid degradation. Note=Beta-2-microglobulin may adopt the fibrillar configuration of amyloid in certain pathologic states. The capacity to assemble into amyloid fibrils is concentration dependent. Persistently high beta(2)-microglobulin serum levels lead to amyloidosis in patients on long-term hemodialysis.
<b>Sequence similarities</b>	Belongs to the beta-2-microglobulin family. Contains 1 Ig-like C1-type (immunoglobulin-like) domain.
<b>Post-translational modifications</b>	Glycation of Ile-21 is observed in long-term hemodialysis patients.
<b>Cellular localization</b>	Secreted. Detected in serum and urine.

## Images



Anti-beta 2 Microglobulin antibody (ab223571) at 0.3 µg/ml + human duodenum lysate (in RIPA buffer) at 35 µg

Developed using the ECL technique.

**Predicted band size:** 14 kDa

**Observed band size:** 12 kDa

Primary incubation was 1 hour.

**Please note:** All products are "FOR RESEARCH USE ONLY. NOT FOR USE IN DIAGNOSTIC PROCEDURES"

### Our Abpromise to you: Quality guaranteed and expert technical support

---

- Replacement or refund for products not performing as stated on the datasheet
- Valid for 12 months from date of delivery
- Response to your inquiry within 24 hours
- We provide support in Chinese, English, French, German, Japanese and Spanish
- Extensive multi-media technical resources to help you
- We investigate all quality concerns to ensure our products perform to the highest standards

If the product does not perform as described on this datasheet, we will offer a refund or replacement. For full details of the Abpromise, please visit <https://www.abcam.com/abpromise> or contact our technical team.

### Terms and conditions

---

- Guarantee only valid for products bought direct from Abcam or one of our authorized distributors