

## Product datasheet

# Anti-beta Galactosidase antibody [DC1 4C7] ab116

[7 References](#) [1 Image](#)

### Overview

---

<b>Product name</b>	Anti-beta Galactosidase antibody [DC1 4C7]
<b>Description</b>	Mouse monoclonal [DC1 4C7] to beta Galactosidase
<b>Host species</b>	Mouse
<b>Tested applications</b>	<b>Suitable for:</b> WB, ELISA
<b>Species reactivity</b>	<b>Reacts with:</b> Escherichia coli
<b>Immunogen</b>	Full length protein. This information is proprietary to Abcam and/or its suppliers.
<b>General notes</b>	<p>This monoclonal is also known as clone HD4C7 or HD 447C.</p> <p>This antibody clone is manufactured by Abcam. If you require a custom buffer formulation or conjugation for your experiments, please contact <a href="mailto:orders@abcam.com">orders@abcam.com</a>.</p> <p>The Life Science industry has been in the grips of a reproducibility crisis for a number of years. Abcam is leading the way in addressing this with our range of recombinant monoclonal antibodies and knockout edited cell lines for gold-standard validation. Please check that this product meets your needs before purchasing.</p> <p>If you have any questions, special requirements or concerns, please send us an inquiry and/or contact our Support team ahead of purchase. Recommended alternatives for this product can be found below, along with publications, customer reviews and Q&amp;As</p>

### Properties

---

<b>Form</b>	Liquid
<b>Storage instructions</b>	Shipped at 4°C. Store at +4°C short term (1-2 weeks). Upon delivery aliquot. Store at -20°C or -80°C. Avoid freeze / thaw cycle.
<b>Storage buffer</b>	pH: 7.40 Preservative: 0.02% Sodium azide Constituents: PBS, 6.97% L-Arginine
<b>Purity</b>	Protein G purified
<b>Clonality</b>	Monoclonal
<b>Clone number</b>	DC1 4C7
<b>Myeloma</b>	P3-NS1/1-Ag4-1
<b>Isotype</b>	IgG1

Light chain type

kappa

## Applications

### The Abpromise guarantee

Our **Abpromise guarantee** covers the use of ab116 in the following tested applications.

The application notes include recommended starting dilutions; optimal dilutions/concentrations should be determined by the end user.

Application	Abreviews	Notes
WB		Use at an assay dependent concentration.
ELISA		Use at an assay dependent concentration.

## Target

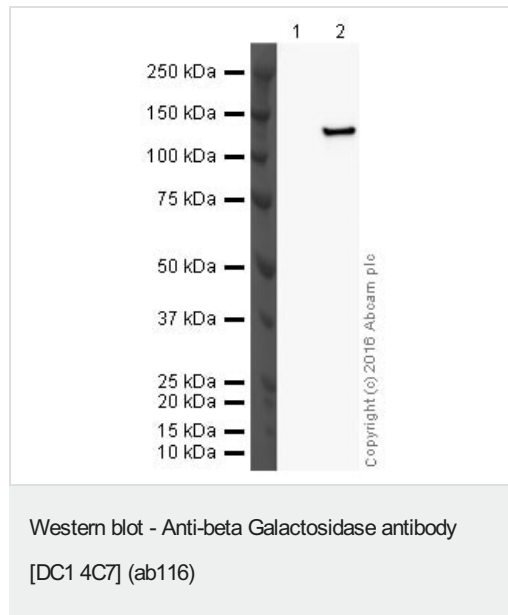
### Relevance

Beta galactosidase is coded by a gene (*lac z*) in the *lac* operon of *Escherichia coli*. It is a metalloenzyme that splits lactose into glucose and galactose. It hydrolyzes terminal, non-reducing beta-D-galactose residues in beta-D-galactosides. Activation by cations seems to be substrate dependent. K<sup>+</sup>, Na<sup>+</sup>, NH<sub>4</sub><sup>+</sup>, Rb<sup>+</sup>, Cs<sup>+</sup> and Mn<sup>++</sup> all activate enzyme activity based upon the substrate used.

### Cellular localization

Cytoplasmic

## Images



**All lanes** : Anti-beta Galactosidase antibody [DC1 4C7] (ab116) at 1 µg

**Lane 1** : Recombinant Human GLB1/Beta-galactosidase protein ([ab151890](#))

**Lane 2** : Native *E. coli* beta Galactosidase protein ([ab79449](#))

Lysates/proteins at 0.1 µg per lane.

### Secondary

**All lanes** : Goat polyclonal to Mouse IgG - H&L - Pre-Adsorbed (HRP) ([ab65485](#)) at 1/5000 dilution

Performed under reducing conditions.

**Exposure time:** 4 minutes

**Please note:** All products are "FOR RESEARCH USE ONLY. NOT FOR USE IN DIAGNOSTIC PROCEDURES"

## **Our Abpromise to you: Quality guaranteed and expert technical support**

---

- Replacement or refund for products not performing as stated on the datasheet
- Valid for 12 months from date of delivery
- Response to your inquiry within 24 hours
  
- We provide support in Chinese, English, French, German, Japanese and Spanish
- Extensive multi-media technical resources to help you
- We investigate all quality concerns to ensure our products perform to the highest standards

If the product does not perform as described on this datasheet, we will offer a refund or replacement. For full details of the Abpromise, please visit <https://www.abcam.com/abpromise> or contact our technical team.

## **Terms and conditions**

---

- Guarantee only valid for products bought direct from Abcam or one of our authorized distributors