


Product datasheet

Anti-BFL-1/GRS antibody ab106825

1 Image

Overview

Product name	Anti-BFL-1/GRS antibody
Description	Goat polyclonal to BFL-1/GRS
Host species	Goat
Specificity	ab106825 is expected to recognize both reported isoforms (NP_004040.1; NP_001108207.1).
Tested applications	Suitable for: WB
Species reactivity	Reacts with: Human Predicted to work with: Cow, Dog 
Immunogen	Synthetic peptide corresponding to Human BFL-1/GRS aa 60-69 (internal sequence). Sequence: C-NVVSVDTART

Database link: [NP_004040.1](#)

 [Run BLAST with](#)

 [Run BLAST with](#)

Positive control Human bone marrow lysate

General notes

The Life Science industry has been in the grips of a reproducibility crisis for a number of years. Abcam is leading the way in addressing this with our range of recombinant monoclonal antibodies and knockout edited cell lines for gold-standard validation. Please check that this product meets your needs before purchasing.

If you have any questions, special requirements or concerns, please send us an inquiry and/or contact our Support team ahead of purchase. Recommended alternatives for this product can be found below, along with publications, customer reviews and Q&As

Properties

Form	Liquid
Storage instructions	Shipped at 4°C. Upon delivery aliquot and store at -20°C. Avoid freeze / thaw cycles.
Storage buffer	pH: 7.30 Preservative: 0.02% Sodium azide Constituents: Tris buffered saline, 0.5% BSA
Purity	Immunogen affinity purified
Purification notes	ab106825 was purified from goat serum by ammonium sulphate precipitation followed by antigen

affinity chromatography using the immunizing peptide.

Clonality Polyclonal
Isotype IgG

Applications

The Abpromise guarantee Our **Abpromise guarantee** covers the use of ab106825 in the following tested applications. The application notes include recommended starting dilutions; optimal dilutions/concentrations should be determined by the end user.

Application	Abreviews	Notes
WB		Use a concentration of 0.1 - 0.3 µg/ml. Detects a band of approximately 20 kDa (predicted molecular weight: 20 kDa). 1 hour primary incubation is recommended for this product.

Target

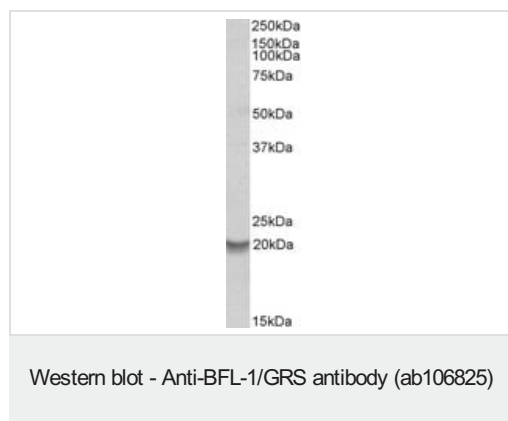
Function Retards apoptosis induced by IL-3 deprivation. May function in the response of hemopoietic cells to external signals and in maintaining endothelial survival during infection.

Tissue specificity Seems to be restricted to the hematopoietic compartment. Expressed in peripheral blood, spleen, and bone marrow, at moderate levels in lung, small intestine and testis, at a minimal levels in other tissues. Also found in vascular smooth muscle cells and hematopoietic malignancies.

Sequence similarities Belongs to the Bcl-2 family.

Cellular localization Cytoplasm.

Images



Anti-BFL-1/GRS antibody (ab106825) at 0.2 µg/ml + Human Bone Marrow lysate in RIPA buffer at 35 µg

Developed using the ECL technique.

Predicted band size: 20 kDa

Observed band size: 20 kDa

Primary incubation was 1 hour.

Please note: All products are "FOR RESEARCH USE ONLY. NOT FOR USE IN DIAGNOSTIC PROCEDURES"

Our Abpromise to you: Quality guaranteed and expert technical support

- Replacement or refund for products not performing as stated on the datasheet
- Valid for 12 months from date of delivery
- Response to your inquiry within 24 hours

- We provide support in Chinese, English, French, German, Japanese and Spanish
- Extensive multi-media technical resources to help you
- We investigate all quality concerns to ensure our products perform to the highest standards

If the product does not perform as described on this datasheet, we will offer a refund or replacement. For full details of the Abpromise, please visit <https://www.abcam.com/abpromise> or contact our technical team.

Terms and conditions

- Guarantee only valid for products bought direct from Abcam or one of our authorized distributors