

### Anti-BIN1 antibody ab27796

[2 References](#) [1 Image](#)

#### Overview

<b>Product name</b>	Anti-BIN1 antibody
<b>Description</b>	Rabbit polyclonal to BIN1
<b>Host species</b>	Rabbit
<b>Tested applications</b>	<b>Suitable for:</b> WB
<b>Species reactivity</b>	<b>Reacts with:</b> Human
<b>Immunogen</b>	Synthetic peptide corresponding to Mouse BIN1. Corresponding to region surrounding amino acid 578 Database link: <a href="#">O08539-1</a>
<b>Positive control</b>	Jurkat cells
<b>General notes</b>	<p>This product is manufactured by BioVision, an Abcam company and was previously called 3672 Bin1 Antibody. 3672-100 is the same size as the 100 µg size of ab27796.</p> <p>The Life Science industry has been in the grips of a reproducibility crisis for a number of years. Abcam is leading the way in addressing this with our range of recombinant monoclonal antibodies and knockout edited cell lines for gold-standard validation. Please check that this product meets your needs before purchasing.</p> <p>If you have any questions, special requirements or concerns, please send us an inquiry and/or contact our Support team ahead of purchase. Recommended alternatives for this product can be found below, along with publications, customer reviews and Q&amp;As</p>

#### Properties

<b>Form</b>	Liquid
<b>Storage instructions</b>	Shipped at 4°C. Store at +4°C short term (1-2 weeks). Upon delivery aliquot. Store at -20°C long term.
<b>Storage buffer</b>	Preservative: 0.02% Thimerosal (merthiolate) Constituents: PBS, 20% Glycerol (glycerin, glycerine), 0.1% BSA
<b>Purity</b>	Immunogen affinity purified
<b>Clonality</b>	Polyclonal
<b>Isotype</b>	IgG

## Applications

### The Abpromise guarantee

Our **Abpromise guarantee** covers the use of ab27796 in the following tested applications.

The application notes include recommended starting dilutions; optimal dilutions/concentrations should be determined by the end user.

Application	Abreviews	Notes
WB		

### Application notes

WB: Use at a concentration of 0.5 - 2.0 µg/ml. Predicted molecular weight: 65 kDa and a 45kDa fragment can be detected in apoptotic samples.

Not yet tested in other applications.

Optimal dilutions/concentrations should be determined by the end user.

## Target

### Function

May be involved in regulation of synaptic vesicle endocytosis. May act as a tumor suppressor and inhibits malignant cell transformation.

### Tissue specificity

Ubiquitous. Highest expression in the brain and muscle. Isoform IIA is expressed only in the brain where it is concentrated in axon initial segments and nodes of Ranvier. Isoform BIN1 is widely expressed with highest expression in skeletal muscle.

### Involvement in disease

Defects in BIN1 are the cause of centronuclear myopathy autosomal recessive (ARCNM) [MIM:255200]; also known as autosomal recessive myotubular myopathy. Centronuclear myopathies are congenital muscle disorders characterized by progressive muscular weakness and wasting involving mainly limb girdle, trunk, and neck muscles. It may also affect distal muscles. Weakness may be present during childhood or adolescence or may not become evident until the third decade of life. Ptosis is a frequent clinical feature. The most prominent histopathologic features include high frequency of centrally located nuclei in muscle fibers not secondary to regeneration, radial arrangement of sarcoplasmic strands around the central nuclei, and predominance and hypotrophy of type 1 fibers.

### Sequence similarities

Contains 1 BAR domain.

Contains 1 SH3 domain.

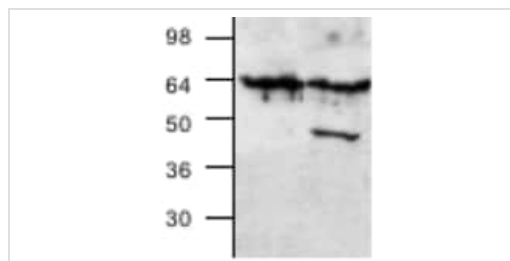
### Post-translational modifications

Phosphorylated by protein kinase C.

### Cellular localization

Cytoplasm and Nucleus.

## Images



Western blot - Anti-BIN1 antibody (ab27796)

**All lanes :** Anti-BIN1 antibody (ab27796) at 2 µg/ml

**Lane 1 :** Jurkat whole cell lysate (**ab7899**)

**Lane 2 :** Jurkat cells treated with camptothecin for 6 hours

**Predicted band size:** 65 kDa

**Observed band size:** 64 kDa

**Additional bands at:** 48 kDa (possible cleavage fragment)

**Please note:** All products are "FOR RESEARCH USE ONLY. NOT FOR USE IN DIAGNOSTIC PROCEDURES"

### Our Abpromise to you: Quality guaranteed and expert technical support

---

- Replacement or refund for products not performing as stated on the datasheet
- Valid for 12 months from date of delivery
- Response to your inquiry within 24 hours
- We provide support in Chinese, English, French, German, Japanese and Spanish
- Extensive multi-media technical resources to help you
- We investigate all quality concerns to ensure our products perform to the highest standards

If the product does not perform as described on this datasheet, we will offer a refund or replacement. For full details of the Abpromise, please visit <https://www.abcam.com/abpromise> or contact our technical team.

### Terms and conditions

---

- Guarantee only valid for products bought direct from Abcam or one of our authorized distributors