

Biotin Anti-beta Galactosidase antibody ab6645

[4 References](#) [1 Image](#)

Overview

Product name	Biotin Anti-beta Galactosidase antibody
Description	Biotin Rabbit polyclonal to beta Galactosidase
Host species	Rabbit
Conjugation	Biotin
Tested applications	Suitable for: Dot blot, ELISA, WB, IHC-P
Species reactivity	Reacts with: Escherichia coli
Immunogen	Full length native protein (purified) corresponding to Escherichia coli beta Galactosidase.
General notes	<p>Biotinamidocaproate N-Hydroxysuccinimide Ester (BAC) Biotin/Protein Ratio: 10-20 BAC molecules per rabbit IgG molecule.</p> <p>The Life Science industry has been in the grips of a reproducibility crisis for a number of years. Abcam is leading the way in addressing this with our range of recombinant monoclonal antibodies and knockout edited cell lines for gold-standard validation. Please check that this product meets your needs before purchasing.</p> <p>If you have any questions, special requirements or concerns, please send us an inquiry and/or contact our Support team ahead of purchase. Recommended alternatives for this product can be found below, along with publications, customer reviews and Q&As</p>

Properties

Form	Liquid
Storage instructions	Shipped at 4°C. Store at +4°C short term (1-2 weeks). Store at -20°C or -80°C. Avoid freeze / thaw cycle.
Storage buffer	<p>pH: 6.50</p> <p>Preservative: 0.01% Sodium azide</p> <p>Constituents: 0.42% Tripotassium orthophosphate, 0.87% Sodium chloride, 1% BSA</p>
Purity	IgG fraction
Purification notes	This product is an IgG fraction antibody purified from monospecific antiserum by a multi-step process which includes delipidation, salt fractionation and ion exchange chromatography followed by extensive dialysis against the buffer.
Clonality	Polyclonal

Isotype

IgG

Applications

The Abpromise guarantee

Our **Abpromise guarantee** covers the use of ab6645 in the following tested applications.

The application notes include recommended starting dilutions; optimal dilutions/concentrations should be determined by the end user.

Application	Abreviews	Notes
Dot blot		Use at an assay dependent concentration.
ELISA		1/10000 - 1/50000.
WB		1/2000 - 1/10000.
IHC-P		1/1000 - 1/5000.

Target

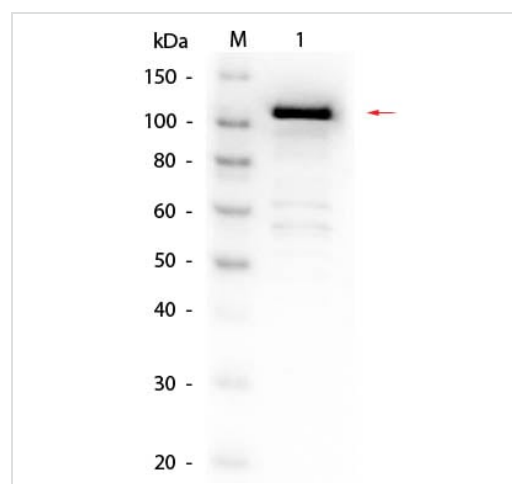
Relevance

Beta galactosidase is coded by a gene (lac z) in the lac operon of Escherichia coli. It is a metalloenzyme that splits lactose into glucose and galactose. It hydrolyzes terminal, non-reducing beta-D-galactose residues in beta-D-galactosides. Activation by cations seems to be substrate dependent. K⁺, Na⁺, NH₄⁺, Rb⁺, Cs⁺ and Mn⁺⁺ all activate enzyme activity based upon the substrate used.

Cellular localization

Cytoplasmic

Images



Western blot - Biotin Anti-beta Galactosidase antibody (ab6645)

Biotin Anti-beta Galactosidase antibody (ab6645) at 1/1000 dilution
+ Beta Galactosidase at 0.05 µg with Blocking buffer

Secondary

HRP streptavidin conjugate at 1/40000 dilution

Please note: All products are "FOR RESEARCH USE ONLY. NOT FOR USE IN DIAGNOSTIC PROCEDURES"

Our Abpromise to you: Quality guaranteed and expert technical support

- Replacement or refund for products not performing as stated on the datasheet
- Valid for 12 months from date of delivery
- Response to your inquiry within 24 hours

- We provide support in Chinese, English, French, German, Japanese and Spanish
- Extensive multi-media technical resources to help you
- We investigate all quality concerns to ensure our products perform to the highest standards

If the product does not perform as described on this datasheet, we will offer a refund or replacement. For full details of the Abpromise, please visit <https://www.abcam.com/abpromise> or contact our technical team.

Terms and conditions

- Guarantee only valid for products bought direct from Abcam or one of our authorized distributors