

Biotin Anti-CD34 antibody [4H11[APG]] ab21893

[1 Image](#)

Overview

Product name	Biotin Anti-CD34 antibody [4H11[APG]]
Description	Biotin Mouse monoclonal [4H11[APG]] to CD34
Host species	Mouse
Conjugation	Biotin
Specificity	The antibody 4H11[APG] completely blocks binding of Class II antibody QBEnd10 and Class III antibodies BIRMA K3 and 8G12 on KG1a cell line.
Tested applications	Suitable for: Flow Cyt
Species reactivity	Reacts with: Human
Immunogen	Tissue, cells or virus corresponding to CD34. Permanent human cell line derived from peripheral leucocytes of a patient suffering from chronic myeloid leukaemia
Epitope	Class III epitope on CD34 antigen.
Positive control	Flow Cyt: Human peripheral blood.
General notes	<p>The purified antibody is conjugated with Biotin-LC-NHS under optimum conditions. The reagent is free of unconjugated biotin.</p> <p>The Life Science industry has been in the grips of a reproducibility crisis for a number of years. Abcam is leading the way in addressing this with our range of recombinant monoclonal antibodies and knockout edited cell lines for gold-standard validation. Please check that this product meets your needs before purchasing.</p> <p>If you have any questions, special requirements or concerns, please send us an inquiry and/or contact our Support team ahead of purchase. Recommended alternatives for this product can be found below, along with publications, customer reviews and Q&As</p>

Properties

Form	Liquid
Storage instructions	Shipped at 4°C. Store at +4°C short term (1-2 weeks). Store at -20°C or -80°C. Avoid freeze / thaw cycle.
Storage buffer	<p>pH: 7.40</p> <p>Preservative: 0.097% Sodium azide</p> <p>Constituent: PBS</p>

Purity	Protein G purified
Clonality	Monoclonal
Clone number	4H11[APG]
Isotype	IgG1

Applications

The Abpromise guarantee Our **Abpromise guarantee** covers the use of ab21893 in the following tested applications.

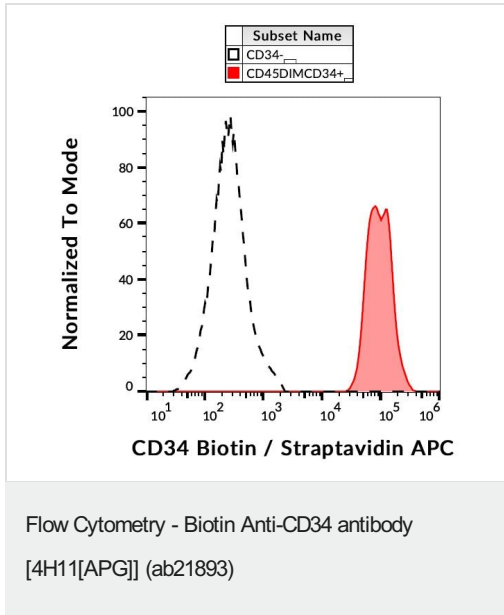
The application notes include recommended starting dilutions; optimal dilutions/concentrations should be determined by the end user.

Application	Abreviews	Notes
Flow Cyt		Use a concentration of 1 - 2 µg/ml.

Target

Function	Possible adhesion molecule with a role in early hematopoiesis by mediating the attachment of stem cells to the bone marrow extracellular matrix or directly to stromal cells. Could act as a scaffold for the attachment of lineage specific glycans, allowing stem cells to bind to lectins expressed by stromal cells or other marrow components. Presents carbohydrate ligands to selectins.
Tissue specificity	Selectively expressed on hematopoietic progenitor cells and the small vessel endothelium of a variety of tissues.
Sequence similarities	Belongs to the CD34 family.
Developmental stage	On early hematopoietic progenitor cells.
Post-translational modifications	Highly glycosylated. Phosphorylated on serine residues by PKC.
Cellular localization	Membrane.

Images



Flow Cytometry analysis of human peripheral blood labeling CD34 positive CD45dim stem cells with ab21893 (red-filled) from lymphocytes (black-dashed) and visualized with biotin / streptavidin-APC.

Please note: All products are "FOR RESEARCH USE ONLY. NOT FOR USE IN DIAGNOSTIC PROCEDURES"

Our Abpromise to you: Quality guaranteed and expert technical support

- Replacement or refund for products not performing as stated on the datasheet
- Valid for 12 months from date of delivery
- Response to your inquiry within 24 hours
- We provide support in Chinese, English, French, German, Japanese and Spanish
- Extensive multi-media technical resources to help you
- We investigate all quality concerns to ensure our products perform to the highest standards

If the product does not perform as described on this datasheet, we will offer a refund or replacement. For full details of the Abpromise, please visit <https://www.abcam.com/abpromise> or contact our technical team.

Terms and conditions

- Guarantee only valid for products bought direct from Abcam or one of our authorized distributors