

## Product datasheet

### Biotin Anti-CSF-1-R antibody [12-3A3-1B10] ab95730

[1 Image](#)

#### Overview

|                            |   |
|----------------------------|---|
| <b>Product name</b>        | Biotin Anti-CSF-1-R antibody [12-3A3-1B10]  |
| <b>Description</b>         | Biotin Rat monoclonal [12-3A3-1B10] to CSF-1-R  |
| <b>Host species</b>        | Rat   |
| <b>Conjugation</b>         | Biotin  |
| <b>Tested applications</b> | <b>Suitable for:</b> Flow Cyt   |
| <b>Species reactivity</b>  | <b>Reacts with:</b> Human   |
| <b>Immunogen</b>           | Tissue, cells or virus corresponding to Human CSF-1-R. Helper free retrovirus containing human c-fms gene.  |
| <b>Positive control</b>    | Flow Cyt: Normal human peripheral blood cells.  |
| <b>General notes</b>       | <p>The Life Science industry has been in the grips of a reproducibility crisis for a number of years. Abcam is leading the way in addressing this with our range of recombinant monoclonal antibodies and knockout edited cell lines for gold-standard validation. Please check that this product meets your needs before purchasing.</p> <p>If you have any questions, special requirements or concerns, please send us an inquiry and/or contact our Support team ahead of purchase. Recommended alternatives for this product can be found below, along with publications, customer reviews and Q&amp;As</p> |

#### Properties

|                             |   |
|-----------------------------|---|
| <b>Form</b>                 | Liquid  |
| <b>Storage instructions</b> | Shipped at 4°C. Store at +4°C short term (1-2 weeks). Store at -20°C or -80°C. Avoid freeze / thaw cycle. |
| <b>Storage buffer</b>       | <p>pH: 7.20</p> <p>Preservative: 0.09% Sodium azide</p> <p>Constituents: 0.87% Sodium chloride, PBS</p>   |
| <b>Purity</b>               | Protein G purified  |
| <b>Clonality</b>            | Monoclonal  |
| <b>Clone number</b>         | 12-3A3-1B10   |
| <b>Isotype</b>              | IgG1  |

## Applications

### The Abpromise guarantee

Our **Abpromise guarantee** covers the use of ab95730 in the following tested applications.

The application notes include recommended starting dilutions; optimal dilutions/concentrations should be determined by the end user.

| Application | Abreviews | Notes   |
|-------------|-----------|---|
| Flow Cyt    |           | Use 0.06µg for 10 <sup>5-8</sup> cells.<br>(based on a final test volume of 100 µl).<br><b>ab18403</b> - Rat monoclonal IgG1, is suitable for use as an isotype control with this antibody. |

## Target

### Function

Protein tyrosine-kinase transmembrane receptor for CSF1 and IL34.

### Tissue specificity

Expressed in bone marrow and in differentiated blood mononuclear cells.

### Sequence similarities

Belongs to the protein kinase superfamily. Tyr protein kinase family. CSF-1/PDGF receptor subfamily.

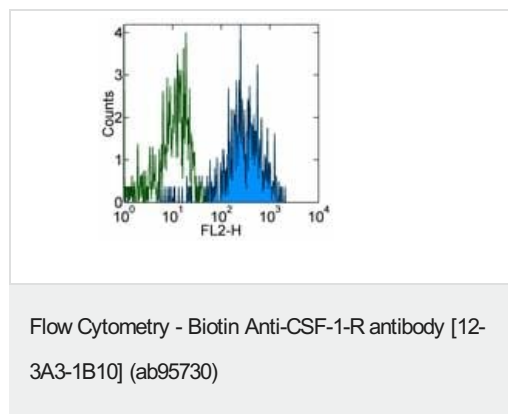
Contains 5 Ig-like C2-type (immunoglobulin-like) domains.

Contains 1 protein kinase domain.

### Cellular localization

Membrane.

## Images



Staining of normal human peripheral blood cells with 0.5 µg of Isotype Control Biotin (open histogram) or 0.5 µg of ab95730 (filled histogram).

**Please note:** All products are "FOR RESEARCH USE ONLY. NOT FOR USE IN DIAGNOSTIC PROCEDURES"

## Our Abpromise to you: Quality guaranteed and expert technical support

- Replacement or refund for products not performing as stated on the datasheet
- Valid for 12 months from date of delivery
- Response to your inquiry within 24 hours
- We provide support in Chinese, English, French, German, Japanese and Spanish
- Extensive multi-media technical resources to help you

- We investigate all quality concerns to ensure our products perform to the highest standards

If the product does not perform as described on this datasheet, we will offer a refund or replacement. For full details of the Abpromise, please visit <https://www.abcam.com/abpromise> or contact our technical team.

### **Terms and conditions**

---

- Guarantee only valid for products bought direct from Abcam or one of our authorized distributors