

Product datasheet

Biotin Anti-Human Ig light chain antibody [RM129] ab193185

Recombinant

3 Images

Overview

Product name	Biotin Anti-Human Ig light chain antibody [RM129]
Description	Biotin Rabbit monoclonal [RM129] to Human Ig light chain
Host species	Rabbit
Conjugation	Biotin
Tested applications	Suitable for: Sandwich ELISA, ELISA
Species reactivity	Reacts with: Human Does not react with: Mouse, Rat, Goat
Immunogen	Full length protein corresponding to Human Human Ig light chain. Purified Native Human IgG from Human Plasma

Properties

Form	Liquid
Storage instructions	Shipped at 4°C. Store at +4°C short term (1-2 weeks). Upon delivery aliquot. Store at -20°C long term. Avoid freeze / thaw cycle. Store In the Dark.
Storage buffer	Preservative: 0.09% Sodium azide Constituents: 48.91% PBS, 1% BSA, 50% Glycerol
Purity	Protein A purified
Purification notes	Protein A affinity purified from an animal origin-free culture supernatant.
Clonality	Monoclonal
Clone number	RM129
Isotype	IgG

Applications

The Abpromise guarantee Our **Abpromise guarantee** covers the use of ab193185 in the following tested applications. The application notes include recommended starting dilutions; optimal dilutions/concentrations should be determined by the end user.

Application	Abreviews	Notes
Sandwich ELISA		Use a concentration of 0.02 - 0.25 µg/ml. May be paired with <u>ab195574</u> .
ELISA		Use at an assay dependent concentration.

Target

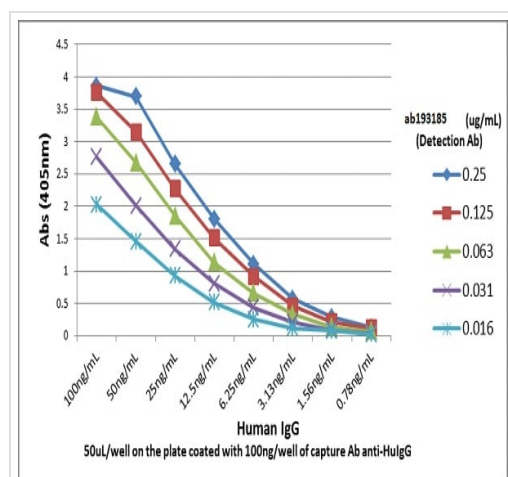
Relevance

There are only two types of light chain: kappa and lambda in mammals. Other types of light chains are found in lower vertebrates as the Ig-Light-Iota chain in Chondrichthyes and Teleostei. In each antibody, only one type is present and the two chains are identical. Each light chain has two successive domains: one constant and one variable domain. In humans 60% of light chains are kappa and 40% lambda, whereas in the mouse 95% of light chains are kappa. The amino acid sequences of lambda chains vary slightly at a few positions, allowing them to be classified into subtypes. The number of subtypes varies between species. Monoclonal immunoglobulin free light chains (FLC) are found in the serum and urine (Bence-Jones protein) of patients with a number of B-cell proliferative disorders, including multiple myeloma. Changes in serum FLC concentrations can provide a rapid and sensitive indication of response to treatment.

Cellular localization

Cell Membrane: single-pass type I membrane protein and Secreted

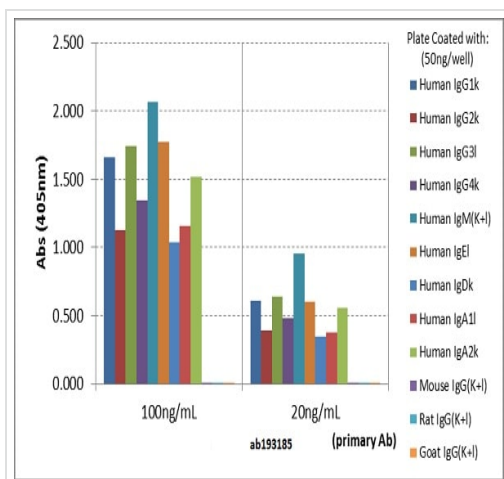
Images



Sandwich ELISA - Biotin Anti-Human Ig light chain antibody [RM129] (ab193185)

A titer Sandwich ELISA using ab193185 as the detection antibody.

The plate, coated with the capture antibody anti-human IgG, was loaded with different amounts of human IgG. A serial dilution of ab193185 was used as the detection antibody, followed with an alkaline phosphatase conjugated streptavidin.



ELISA of human immunoglobulins shows ab193185 reacts to both kappa and lambda light chains of human immunoglobulins. No cross reactivity with mouse, rat, or goat immunoglobulin light chain. The plate was coated with 50ng/well of different immunoglobulins. 100 ng/mL or 20 ng/mL was used as the primary antibody. An alkaline phosphatase conjugated anti-rabbit IgG as the secondary antibody.

ELISA - Biotin Anti-Human Ig light chain antibody
[RM129] (ab193185)

Why choose a recombinant antibody?



Research with confidence
Consistent and reproducible results



Long-term and scalable supply
Recombinant technology



Success from the first experiment
Confirmed specificity



Ethical standards compliant
Animal-free production

Biotin Anti-Human Ig light chain antibody [RM129]
(ab193185)

Please note: All products are "FOR RESEARCH USE ONLY. NOT FOR USE IN DIAGNOSTIC PROCEDURES"

Our Abpromise to you: Quality guaranteed and expert technical support

- Replacement or refund for products not performing as stated on the datasheet
- Valid for 12 months from date of delivery
- Response to your inquiry within 24 hours

- We provide support in Chinese, English, French, German, Japanese and Spanish
- Extensive multi-media technical resources to help you
- We investigate all quality concerns to ensure our products perform to the highest standards

If the product does not perform as described on this datasheet, we will offer a refund or replacement. For full details of the Abpromise, please visit <https://www.abcam.com/abpromise> or contact our technical team.

Terms and conditions

- Guarantee only valid for products bought direct from Abcam or one of our authorized distributors