

Product datasheet

Biotin Anti-Phosphoserine antibody ab9335

[3 References](#) [1 Image](#)

Overview

Product name	Biotin Anti-Phosphoserine antibody
Description	Biotin Rabbit polyclonal to Phosphoserine
Host species	Rabbit
Conjugation	Biotin
Specificity	Specifically recognizes both free-phosphoserine, serine-phosphorylated peptide and proteins. Does not cross-react with ATP, phosphotyrosine, peptidyl phosphothreonine and serine. Slight cross-reactivity with free phosphothreonine. Readily reacts to known phosphoproteins such as phosvitin and alpha casein.
Tested applications	Suitable for: WB, IP, ELISA
Species reactivity	Reacts with: Species independent
Immunogen	Chemical/ Small Molecule corresponding to Phosphoserine conjugated to keyhole limpet haemocyanin. BSA and KLH-phosphoserine conjugates.
Positive control	Use Mouse brain extract for Western Blotting or synthetic phosphopeptide or phosvitin for ELISA.
General notes	<p>The Life Science industry has been in the grips of a reproducibility crisis for a number of years. Abcam is leading the way in addressing this with our range of recombinant monoclonal antibodies and knockout edited cell lines for gold-standard validation. Please check that this product meets your needs before purchasing.</p> <p>If you have any questions, special requirements or concerns, please send us an inquiry and/or contact our Support team ahead of purchase. Recommended alternatives for this product can be found below, along with publications, customer reviews and Q&As</p>

Properties

Form	Liquid
Storage instructions	Shipped at 4°C. Store at +4°C short term (1-2 weeks). Store at -20°C or -80°C. Avoid freeze / thaw cycle.
Storage buffer	pH: 6.00 Preservative: 0.02% Sodium azide
Purity	Immunogen affinity purified
Purification notes	Immunoaffinity chromatography with phosphoserine-agarose.

Clonality	Polyclonal
Isotype	IgG

Applications

The Abpromise guarantee Our **Abpromise guarantee** covers the use of ab9335 in the following tested applications.

The application notes include recommended starting dilutions; optimal dilutions/concentrations should be determined by the end user.

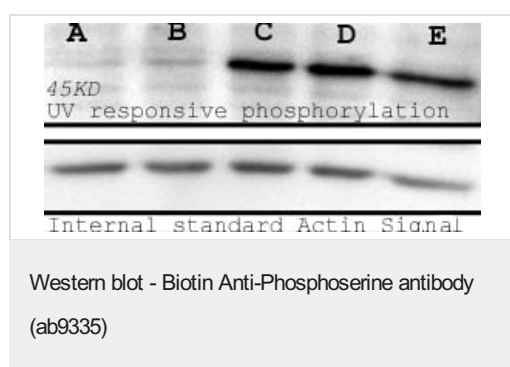
Application	Abreviews	Notes
WB		Use a concentration of 4 µg/ml. Do not use milk as a blocking agent or in diluents, as milk casein is phosphorylated at several serine residues. BSA is recommended instead.
IP		Use at an assay dependent dilution.
ELISA		Use a concentration of 0.5 µg/ml.

Target

Relevance

Changes in the serine/threonine phosphorylation state of a protein in response to various external stimuli can have profound effects on cellular signal transduction, apoptosis and carcinogenesis. The reagents, including phosphorylated protein/peptides, antibodies against the phosphospecific amino acid, are important tools to explore the activation of serine, threonine or tyrosine containing proteins. An aberrant protein phosphorylation is a hallmark of human disease, and the enzymes, particularly protein kinases, which control protein phosphorylation are recognized as a major new drug target family.

Images



Western blotting of a melanoma cell lysate with anti-phosphoserine antibodies

The detected band is 53 kD, and is a similar size to the p53 tumor suppressor factor.

The cells were treated with 0, 50, 200 or 400 J UV (lane A to D, respectively) and with 0.1 µM of okadaic acid (lane E). Actin level was measured as an internal standard of cell protein.

Western blotting of a melanoma cell lysate with anti-phosphoserine antibodies. The detected band is 53 kD, and is a similar size to the p53 tumor suppressor factor. The cells were treated with 0, 50, 200 or 400 J UV (lane A to D, respectively) and with 0.1 µM of okadaic acid (lane E). Actin level was measured as an internal standard of cell protein.

Please note: All products are "FOR RESEARCH USE ONLY. NOT FOR USE IN DIAGNOSTIC PROCEDURES"

Our Abpromise to you: Quality guaranteed and expert technical support

- Replacement or refund for products not performing as stated on the datasheet
- Valid for 12 months from date of delivery
- Response to your inquiry within 24 hours

- We provide support in Chinese, English, French, German, Japanese and Spanish
- Extensive multi-media technical resources to help you
- We investigate all quality concerns to ensure our products perform to the highest standards

If the product does not perform as described on this datasheet, we will offer a refund or replacement. For full details of the Abpromise, please visit <https://www.abcam.com/abpromise> or contact our technical team.

Terms and conditions

- Guarantee only valid for products bought direct from Abcam or one of our authorized distributors