

Anti-Blood Group Lewis a antibody [SPM 522] ab231432

2 Images

Overview

Product name	Anti-Blood Group Lewis a antibody [SPM 522]
Description	Mouse monoclonal [SPM 522] to Blood Group Lewis a
Host species	Mouse
Tested applications	Suitable for: IHC-P
Species reactivity	Reacts with: Human
Immunogen	Full length native protein (purified) corresponding to Human Blood Group Lewis a. Mucin isolated from an ovarian cyst.
Positive control	IHC-P: Human colon carcinoma tissue.
General notes	<p>This product is FOR RESEARCH USE ONLY. For commercial use, please contact partnerships@abcam.com.</p> <p>The Life Science industry has been in the grips of a reproducibility crisis for a number of years. Abcam is leading the way in addressing this with our range of recombinant monoclonal antibodies and knockout edited cell lines for gold-standard validation. Please check that this product meets your needs before purchasing.</p> <p>If you have any questions, special requirements or concerns, please send us an inquiry and/or contact our Support team ahead of purchase. Recommended alternatives for this product can be found below, along with publications, customer reviews and Q&As</p>

Properties

Form	Liquid
Storage instructions	Shipped at 4°C. Store at +4°C short term (1-2 weeks). Upon delivery aliquot. Store at -20°C long term. Avoid freeze / thaw cycle.
Storage buffer	<p>pH: 7.60</p> <p>Preservative: 0.1% Sodium azide</p> <p>Constituents: PBS, 1% BSA</p>
Purity	Protein A/G purified
Purification notes	Purified from TCS by Protein A/G.
Clonality	Monoclonal
Clone number	SPM 522

Isotype

IgG1

Applications

The Abpromise guarantee

Our **Abpromise guarantee** covers the use of ab231432 in the following tested applications.

The application notes include recommended starting dilutions; optimal dilutions/concentrations should be determined by the end user.

Application	Abreviews	Notes
IHC-P		1/200. Perform heat mediated antigen retrieval with citrate buffer pH 6 before commencing with IHC staining protocol. Boil tissue section in Citrate buffer, pH 6.0 for 10 minutes followed by cooling at room temperature for 20 minutes. Incubate with primary antibody for 30 minutes at room temperature.

Target

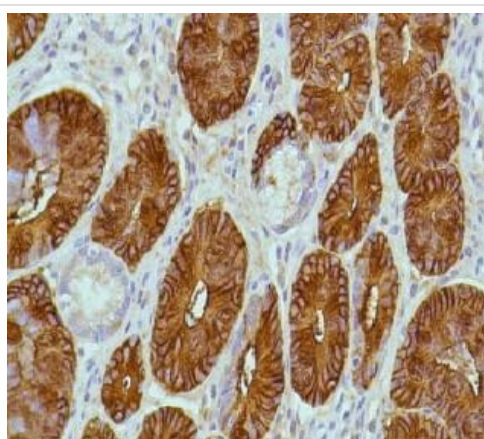
Relevance

Lewis A (type 1 chain) is expressed in colonic epithelial cells and may be useful for detection of gastrointestinal tumors, pancreatic cancer, and colorectal tumors. Blood group related antigens represent a group of carbohydrate determinants carried on both glycolipids and glycoproteins. They are usually mucin-type, and are detected on erythrocytes, certain epithelial cells, and in secretions of certain individuals. Sixteen genetically and biosynthetically distinct but inter-related specificities belong to this group of antigens, including A, B, H, Lewis A, Lewis B, Lewis X, Lewis Y, and precursor type 1 chain antigens.

Cellular localization

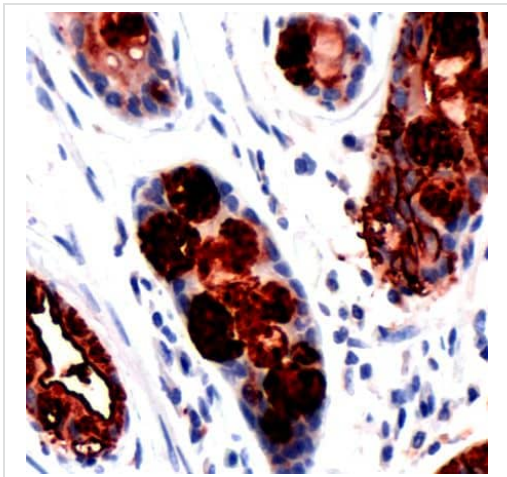
Cytoplasmic

Images



Formalin-fixed, paraffin-embedded human colon carcinoma tissue stained for blood group Lewis a antibody using ab231432 at 1/200 dilution in immunohistochemical analysis.

Immunohistochemistry (Formalin/PFA-fixed paraffin-embedded sections) - Anti-Blood Group Lewis a antibody [SPM 522] (ab231432)



Immunohistochemistry (Formalin/PFA-fixed paraffin-embedded sections) - Anti-Blood Group Lewis x antibody [SPM 522] (ab231432)

Formalin-fixed, paraffin-embedded human colon carcinoma tissue stained for blood group Lewis x antibody using ab231432 at 1/200 dilution in immunohistochemical analysis.

Please note: All products are "FOR RESEARCH USE ONLY. NOT FOR USE IN DIAGNOSTIC PROCEDURES"

Our Abpromise to you: Quality guaranteed and expert technical support

- Replacement or refund for products not performing as stated on the datasheet
- Valid for 12 months from date of delivery
- Response to your inquiry within 24 hours
- We provide support in Chinese, English, French, German, Japanese and Spanish
- Extensive multi-media technical resources to help you
- We investigate all quality concerns to ensure our products perform to the highest standards

If the product does not perform as described on this datasheet, we will offer a refund or replacement. For full details of the Abpromise, please visit <https://www.abcam.com/abpromise> or contact our technical team.

Terms and conditions

- Guarantee only valid for products bought direct from Abcam or one of our authorized distributors