

Anti-Blooms Syndrome Protein Blm antibody ab226945

[2 Images](#)

Overview

Product name	Anti-Blooms Syndrome Protein Blm antibody
Description	Rabbit polyclonal to Blooms Syndrome Protein Blm
Host species	Rabbit
Tested applications	Suitable for: WB, ICC/IF
Species reactivity	Reacts with: Human
Immunogen	Recombinant fragment within Human Blooms Syndrome Protein Blm (internal sequence). The exact sequence is proprietary. Database link: P54132
Positive control	WB: HEK-293T and A431 whole cell lysates. ICC/IF: HeLa cells.
General notes	<p>The Life Science industry has been in the grips of a reproducibility crisis for a number of years. Abcam is leading the way in addressing this with our range of recombinant monoclonal antibodies and knockout edited cell lines for gold-standard validation. Please check that this product meets your needs before purchasing.</p> <p>If you have any questions, special requirements or concerns, please send us an inquiry and/or contact our Support team ahead of purchase. Recommended alternatives for this product can be found below, along with publications, customer reviews and Q&As</p>

Properties

Form	Liquid
Storage instructions	Shipped at 4°C. Store at +4°C short term (1-2 weeks). Upon delivery aliquot. Store at -20°C long term. Avoid freeze / thaw cycle.
Storage buffer	pH: 7.00 Preservative: 0.01% Thimerosal (merthiolate) Constituents: 78.99% PBS, 1% BSA, 20% Glycerol (glycerin, glycerine)
Purity	Immunogen affinity purified
Clonality	Polyclonal
Isotype	IgG

Applications

The Abpromise guarantee

Our **Abpromise guarantee** covers the use of ab226945 in the following tested applications.

The application notes include recommended starting dilutions; optimal dilutions/concentrations should be determined by the end user.

Application	Abreviews	Notes
WB		1/500 - 1/3000. Predicted molecular weight: 159 kDa.
ICC/IF		1/100 - 1/1000.

Target

Function

Participates in DNA replication and repair. Exhibits a magnesium-dependent ATP-dependent DNA-helicase activity that unwinds single- and double-stranded DNA in a 3'-5' direction.

Involvement in disease

Defects in BLM are the cause of Bloom syndrome (BLM) [MIM:210900]. BLM is an autosomal recessive disorder characterized by proportionate pre- and postnatal growth deficiency, sun-sensitive telangiectatic hypo- and hyperpigmented skin, predisposition to malignancy, and chromosomal instability.

Sequence similarities

Belongs to the helicase family. RecQ subfamily.
Contains 1 helicase ATP-binding domain.
Contains 1 helicase C-terminal domain.
Contains 1 HRDC domain.

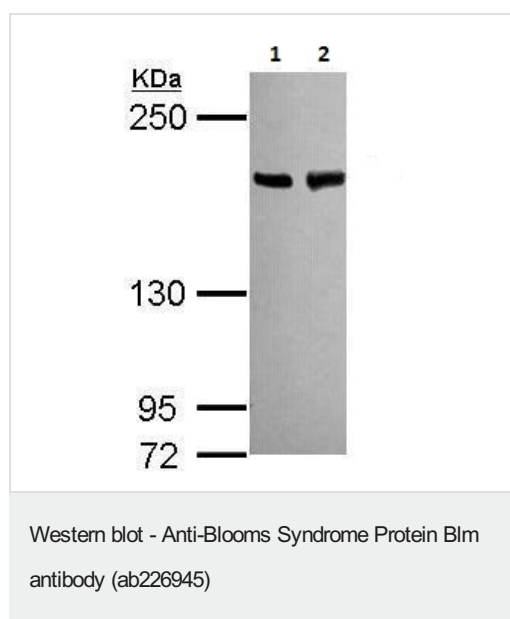
Post-translational modifications

Phosphorylated in response to DNA damage. Phosphorylation requires the FANCA-FANCC-FANCE-FANCF-FANCG protein complex, as well as the presence of RMI1.

Cellular localization

Nucleus.

Images



All lanes : Anti-Blooms Syndrome Protein Blm antibody (ab226945) at 1/1000 dilution

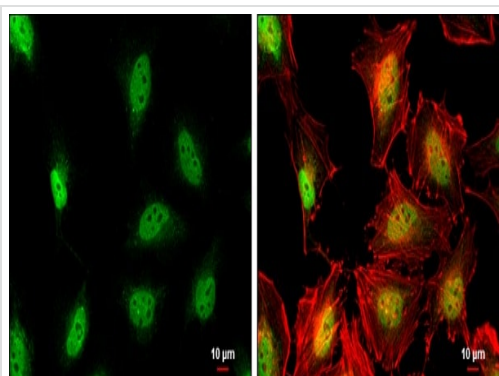
Lane 1 : HEK-293T (human epithelial cell line from embryonic kidney transformed with large T antigen) whole cell lysate

Lane 2 : A431 (human epidermoid carcinoma cell line) whole cell lysate

Lysates/proteins at 30 µg per lane.

Developed using the ECL technique.

Predicted band size: 159 kDa



Immunocytochemistry/ Immunofluorescence - Anti-Blooms Syndrome Protein Bln antibody (ab226945)

HeLa (human epithelial cell line from cervix adenocarcinoma) cells stained for Blooms Syndrome Protein Bln (green) using ab226945 at 1/500 dilution in ICC/IF. Cells were fixed in 4% paraformaldehyde for 15 minutes at RT.

The cytoskeleton is stained with Phalloidin (red).

Please note: All products are "FOR RESEARCH USE ONLY. NOT FOR USE IN DIAGNOSTIC PROCEDURES"

Our Abpromise to you: Quality guaranteed and expert technical support

- Replacement or refund for products not performing as stated on the datasheet
- Valid for 12 months from date of delivery
- Response to your inquiry within 24 hours
- We provide support in Chinese, English, French, German, Japanese and Spanish
- Extensive multi-media technical resources to help you
- We investigate all quality concerns to ensure our products perform to the highest standards

If the product does not perform as described on this datasheet, we will offer a refund or replacement. For full details of the Abpromise, please visit <https://www.abcam.com/abpromise> or contact our technical team.

Terms and conditions

- Guarantee only valid for products bought direct from Abcam or one of our authorized distributors