


## Product datasheet

# Anti-Blooms Syndrome Protein Blm antibody ab5446

★★★★★ [3 Abreviews](#) [2 References](#) [2 Images](#)

### Overview

<b>Product name</b>	Anti-Blooms Syndrome Protein Blm antibody
<b>Description</b>	Goat polyclonal to Blooms Syndrome Protein Blm
<b>Host species</b>	Goat
<b>Tested applications</b>	<b>Suitable for:</b> WB, IP
<b>Species reactivity</b>	<b>Reacts with:</b> Human <b>Predicted to work with:</b> Chimpanzee 
<b>Immunogen</b>	Immunogen was a synthetic peptide, which represented a portion of human Bloom Syndrome encoded within exon 2.
<b>Positive control</b>	WB: HeLa, HEK-293T and Jurkat whole cell lysates. IP: HeLa whole cell lysate.
<b>General notes</b>	<p>The Life Science industry has been in the grips of a reproducibility crisis for a number of years. Abcam is leading the way in addressing this with our range of recombinant monoclonal antibodies and knockout edited cell lines for gold-standard validation. Please check that this product meets your needs before purchasing.</p> <p>If you have any questions, special requirements or concerns, please send us an inquiry and/or contact our Support team ahead of purchase. Recommended alternatives for this product can be found below, along with publications, customer reviews and Q&amp;As</p>

### Properties

<b>Form</b>	Liquid
<b>Storage instructions</b>	Shipped at 4°C. Upon delivery aliquot and store at -20°C. Avoid freeze / thaw cycles.
<b>Storage buffer</b>	pH: 7 Constituents: 0.021% PBS, 1.764% Sodium citrate, 1.815% Tris
<b>Purity</b>	Immunogen affinity purified
<b>Clonality</b>	Polyclonal
<b>Isotype</b>	IgG

### Applications

**The Abpromise guarantee** Our **Abpromise guarantee** covers the use of ab5446 in the following tested applications.

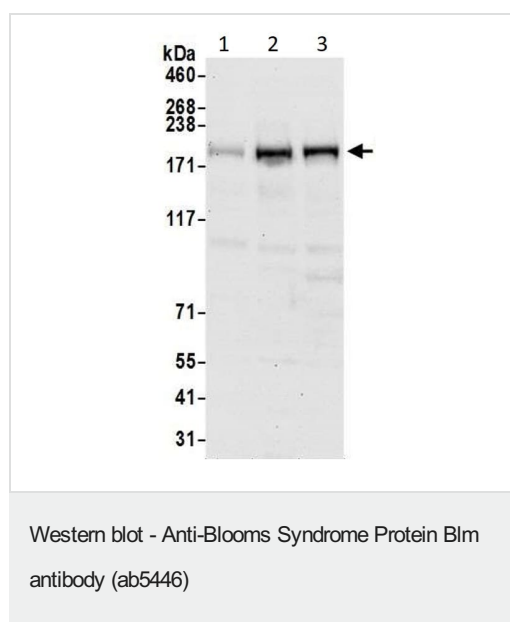
The application notes include recommended starting dilutions; optimal dilutions/concentrations should be determined by the end user.

Application	Abreviews	Notes
WB	★★★★★ (2)	1/10000 - 1/25000. Predicted molecular weight: 159 kDa.
IP		Use at 2-10 µg/mg of lysate.

## Target

<b>Function</b>	Participates in DNA replication and repair. Exhibits a magnesium-dependent ATP-dependent DNA-helicase activity that unwinds single- and double-stranded DNA in a 3'-5' direction.
<b>Involvement in disease</b>	Defects in BLM are the cause of Bloom syndrome (BLM) [MIM:210900]. BLM is an autosomal recessive disorder characterized by proportionate pre- and postnatal growth deficiency, sun-sensitive telangiectatic hypo- and hyperpigmented skin, predisposition to malignancy, and chromosomal instability.
<b>Sequence similarities</b>	Belongs to the helicase family. RecQ subfamily. Contains 1 helicase ATP-binding domain. Contains 1 helicase C-terminal domain. Contains 1 HRDC domain.
<b>Post-translational modifications</b>	Phosphorylated in response to DNA damage. Phosphorylation requires the FANCA-FANCC-FANCE-FANCF-FANCG protein complex, as well as the presence of RMI1.
<b>Cellular localization</b>	Nucleus.

## Images



**All lanes :** Anti-Blooms Syndrome Protein Blm antibody (ab5446)  
at 0.04 µg/ml

**Lane 1 :** HeLa (Human cervix adenocarcinoma epithelial cell)  
whole cell lysate

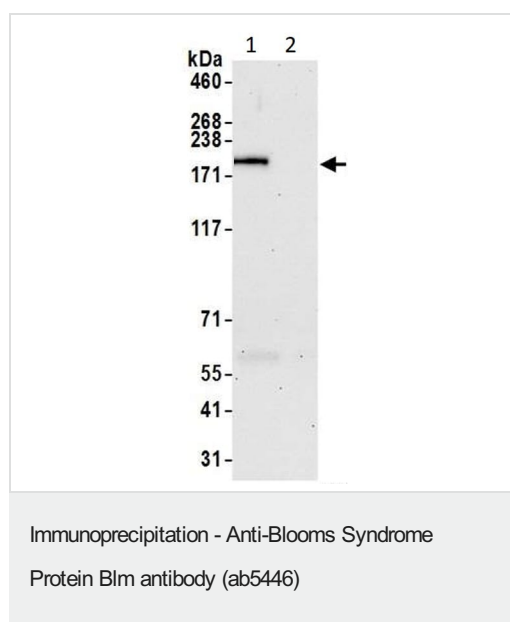
**Lane 2 :** HEK-293T (Human epithelial cell line from embryonic  
kidney transformed with large T antigen) whole cell lysate

**Lane 3 :** Jurkat (Human T cell leukemia cell line from peripheral  
blood) whole cell lysate

Lysates/proteins at 50 µg per lane.

**Predicted band size:** 159 kDa

**Exposure time:** 30 seconds



Blooms Syndrome Protein Blm was immunoprecipitated from HeLa (human epithelial cell line from cervix adenocarcinoma) whole cell lysate (1 mg for IP, 20% of IP loaded) with ab5446 at 6 µg/mg lysate. Western blot was performed from the immunoprecipitate using ab5446 at 1 µg/ml.

**Lane 1:** ab5446 IP in HeLa whole cell lysate.

**Lane 2:** Control IgG IP in HeLa whole cell lysate.

**Please note:** All products are "FOR RESEARCH USE ONLY. NOT FOR USE IN DIAGNOSTIC PROCEDURES"

### Our Abpromise to you: Quality guaranteed and expert technical support

- Replacement or refund for products not performing as stated on the datasheet
- Valid for 12 months from date of delivery
- Response to your inquiry within 24 hours
- We provide support in Chinese, English, French, German, Japanese and Spanish
- Extensive multi-media technical resources to help you
- We investigate all quality concerns to ensure our products perform to the highest standards

If the product does not perform as described on this datasheet, we will offer a refund or replacement. For full details of the Abpromise, please visit <https://www.abcam.com/abpromise> or contact our technical team.

### Terms and conditions

- Guarantee only valid for products bought direct from Abcam or one of our authorized distributors