



### Anti-BMP2 antibody ab14933

★★★★★ [14 Abreviews](#) [161 References](#) [1 Image](#)

#### Overview

<b>Product name</b>	Anti-BMP2 antibody
<b>Description</b>	Rabbit polyclonal to BMP2
<b>Host species</b>	Rabbit
<b>Specificity</b>	ab14933 detects only the pro-form of the BMP2
<b>Tested applications</b>	<b>Suitable for:</b> WB
<b>Species reactivity</b>	<b>Reacts with:</b> Human
<b>Immunogen</b>	Synthetic peptide corresponding to Mouse BMP2 aa 45-60 (N terminal) conjugated to Keyhole Limpet Haemocyanin (KLH). Sequence: SEDVLSEFELRLLSMF  Database link: <a href="#">P21274</a> (Peptide available as <a href="#">ab80798</a> )
	 <a href="#">Run BLAST with</a>  <a href="#">Run BLAST with</a>
<b>Positive control</b>	WB: HeLa, THP, HepG2 and Huh7 cells
<b>General notes</b>	<p>The Life Science industry has been in the grips of a reproducibility crisis for a number of years. Abcam is leading the way in addressing this with our range of recombinant monoclonal antibodies and knockout edited cell lines for gold-standard validation. Please check that this product meets your needs before purchasing.</p> <p>If you have any questions, special requirements or concerns, please send us an inquiry and/or contact our Support team ahead of purchase. Recommended alternatives for this product can be found below, along with publications, customer reviews and Q&amp;As</p>

#### Properties

<b>Form</b>	Liquid
<b>Storage instructions</b>	Shipped at 4°C. Store at +4°C short term (1-2 weeks). Upon delivery aliquot. Store at -20°C or -80°C. Avoid freeze / thaw cycle.
<b>Storage buffer</b>	pH: 7.40 Preservative: 0.02% Sodium azide Constituents: 30% Glycerol, 0.75% BSA

The antibody is provided in antibody stabilization buffer containing phosphate buffer, pH 7.4, glycerol, stabilizing proteins and preservatives. The exact buffer contents are considered proprietary.

<b>Purity</b>	Immunogen affinity purified
<b>Clonality</b>	Polyclonal
<b>Isotype</b>	IgG

## Applications

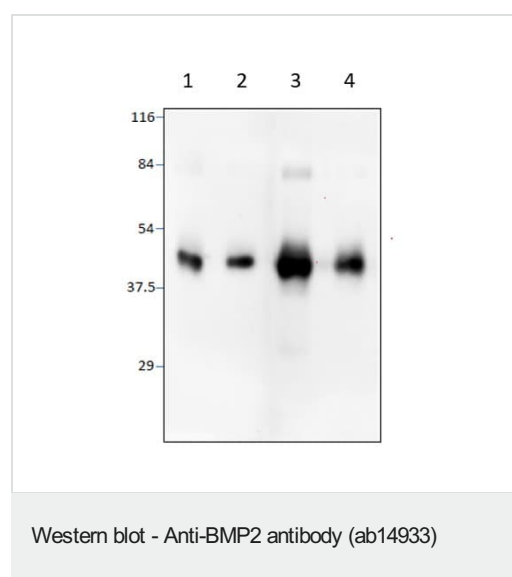
**The Abpromise guarantee** Our **Abpromise guarantee** covers the use of ab14933 in the following tested applications. The application notes include recommended starting dilutions; optimal dilutions/concentrations should be determined by the end user.

Application	Abreviews	Notes
WB	★★★★★ (6)	1/500 - 1/1000. Detects a band of approximately 45 kDa.

## Target

<b>Function</b>	Induces cartilage and bone formation.
<b>Tissue specificity</b>	Particularly abundant in lung, spleen and colon and in low but significant levels in heart, brain, placenta, liver, skeletal muscle, kidney, pancreas, prostate, ovary and small intestine.
<b>Sequence similarities</b>	Belongs to the TGF-beta family.
<b>Cellular localization</b>	Secreted.

## Images



**All lanes :** Anti-BMP2 antibody (ab14933) at 1/500 dilution

**Lane 1 :** HeLa cells

**Lane 2 :** THP cells

**Lane 3 :** HepG2 cells

**Lane 4 :** Huh7 cells

Cell extracts were made in protein extraction buffer (Solobuffer) with protease inhibitor cocktail.

Total 40-50ug of protein was applied in each lane on a 10% SDSPAGE,

The gel was transferred on to Immobilon F and blotted with ab14933.

**Please note:** All products are "FOR RESEARCH USE ONLY. NOT FOR USE IN DIAGNOSTIC PROCEDURES"

### **Our Abpromise to you: Quality guaranteed and expert technical support**

---

- Replacement or refund for products not performing as stated on the datasheet
- Valid for 12 months from date of delivery
- Response to your inquiry within 24 hours
  
- We provide support in Chinese, English, French, German, Japanese and Spanish
- Extensive multi-media technical resources to help you
- We investigate all quality concerns to ensure our products perform to the highest standards

If the product does not perform as described on this datasheet, we will offer a refund or replacement. For full details of the Abpromise, please visit <https://www.abcam.com/abpromise> or contact our technical team.

### **Terms and conditions**

---

- Guarantee only valid for products bought direct from Abcam or one of our authorized distributors