


Anti-BMPER antibody ab73900

★★★★★ [1 Abreviews](#) [2 Images](#)

Overview

Product name	Anti-BMPER antibody
Description	Rabbit polyclonal to BMPER
Host species	Rabbit
Tested applications	Suitable for: ICC/IF, WB
Species reactivity	Reacts with: Mouse Predicted to work with: Rat, Chicken, Cow, Dog, Human, Chimpanzee, Rhesus monkey 
Immunogen	Synthetic peptide corresponding to Mouse BMPER aa 500-600 conjugated to keyhole limpet haemocyanin. (Peptide available as ab74993)
General notes	<p>The Life Science industry has been in the grips of a reproducibility crisis for a number of years. Abcam is leading the way in addressing this with our range of recombinant monoclonal antibodies and knockout edited cell lines for gold-standard validation. Please check that this product meets your needs before purchasing.</p> <p>If you have any questions, special requirements or concerns, please send us an inquiry and/or contact our Support team ahead of purchase. Recommended alternatives for this product can be found below, along with publications, customer reviews and Q&As</p>

Properties

Form	Liquid
Storage instructions	Shipped at 4°C. Store at +4°C short term (1-2 weeks). Upon delivery aliquot. Store at -20°C or -80°C. Avoid freeze / thaw cycle.
Storage buffer	pH: 7.40 Preservative: 0.02% Sodium azide Constituent: PBS Batches of this product that have a concentration < 1mg/ml may have BSA added as a stabilising agent. If you would like information about the formulation of a specific lot, please contact our scientific support team who will be happy to help.
Purity	Immunogen affinity purified
Clonality	Polyclonal

Isotype

IgG

Applications

The Abpromise guarantee

Our **Abpromise guarantee** covers the use of ab73900 in the following tested applications.

The application notes include recommended starting dilutions; optimal dilutions/concentrations should be determined by the end user.

Application	Abreviews	Notes
ICC/IF		Use a concentration of 1 µg/ml.
WB		Use a concentration of 1 µg/ml. Detects a band of approximately 75,110 kDa (predicted molecular weight: 76 kDa).

Target

Function

Inhibitor of bone morphogenetic protein (BMP) function, it may regulate BMP responsiveness of osteoblasts and chondrocytes.

Tissue specificity

Highly expressed in lung, and brain and also in primary chondrocytes.

Involvement in disease

Defects in BMPER are the cause of diaphanospondylodysostosis (DSD) [MIM:608022]. A rare, recessively inherited, perinatal lethal skeletal disorder. The primary skeletal characteristics of the phenotype include a small chest, abnormal vertebral segmentation, and posterior rib gaps containing incompletely differentiated mesenchymal tissue. Consistent craniofacial features include ocular hypertelorism, epicanthal folds, a depressed nasal bridge with a short nose, and low-set ears. The most commonly described extraskeletal finding is nephroblastomatosis with cystic kidneys, but other visceral findings have been described in some cases.

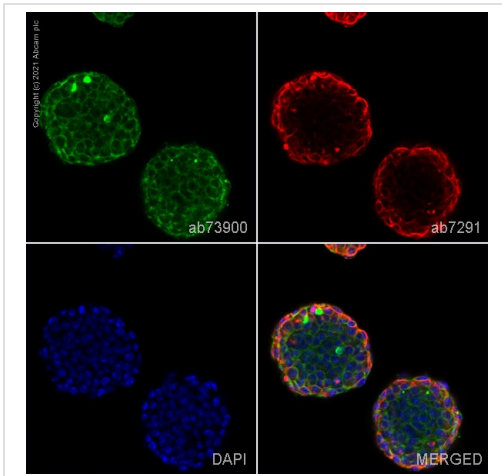
Sequence similarities

Contains 1 TIL (trypsin inhibitory-like) domain.
Contains 5 VWFC domains.
Contains 1 VWFD domain.

Cellular localization

Secreted.

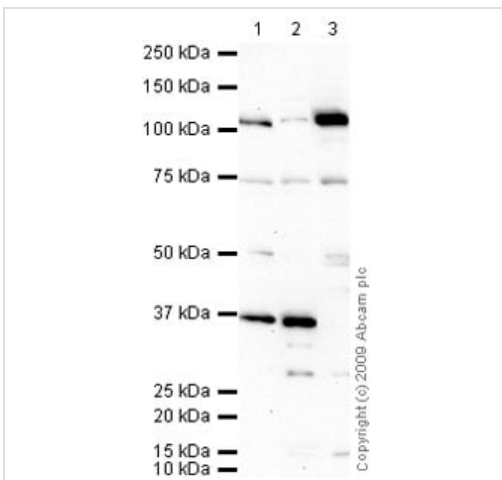
Images



Immunocytochemistry/ Immunofluorescence - Anti-BMPER antibody (ab73900)

ab73900 staining BMPER in mES cells. The cells were fixed with 100% methanol (5 min), permeabilized with 0.1% PBS-Tween for 5 minutes and then blocked with 1% BSA/10% normal goat serum/0.3M glycine in 0.1% PBS-Tween for 1h. The cells were then incubated overnight at 4°C with ab73900 at 1µg/ml and **ab7291**, Mouse monoclonal [DM1A] to alpha Tubulin - Loading Control. Cells were then incubated with **ab150081**, Goat polyclonal Secondary Antibody to Rabbit IgG - H&L (Alexa Fluor® 488), pre-adsorbed at 1/1000 dilution (shown in green) and **ab150120**, Goat polyclonal Secondary Antibody to Mouse IgG - H&L (Alexa Fluor® 594), pre-adsorbed at 1/1000 dilution (shown in pseudocolour red). Nuclear DNA was labelled with DAPI (shown in blue).

Image was acquired with a confocal microscope (Leica-Microsystems TCS SP8) and a single confocal section is shown.



Western blot - Anti-BMPER antibody (ab73900)

All lanes : Anti-BMPER antibody (ab73900) at 1 µg/ml

Lane 1 : F9 (Mouse embryonic carcinoma cell line) Whole Cell Lysate

Lane 2 : NIH 3T3 (Mouse embryonic fibroblast cell line) Whole Cell Lysate

Lane 3 : EBS E14 TG2A Day 0 (Mouse Pluripotent Embryonic Stem Cell) Lysate

Lysates/proteins at 10 µg per lane.

Secondary

All lanes : Goat polyclonal to Rabbit IgG - H&L - Pre-Adsorbed (HRP) at 1/3000 dilution

Developed using the ECL technique.

Performed under reducing conditions.

Predicted band size: 76 kDa

Observed band size: 110,75 kDa

Additional bands at: 37 kDa. We are unsure as to the identity of these extra bands.

Exposure time: 20 minutes

BMPER has a predicted molecular weight of 76 kDa, however it is

extensively glycosylated and has been seen to run in the 100 kDa region (other commercially available antibodies).

Please note: All products are "FOR RESEARCH USE ONLY. NOT FOR USE IN DIAGNOSTIC PROCEDURES"

Our Abpromise to you: Quality guaranteed and expert technical support

- Replacement or refund for products not performing as stated on the datasheet
- Valid for 12 months from date of delivery
- Response to your inquiry within 24 hours

- We provide support in Chinese, English, French, German, Japanese and Spanish
- Extensive multi-media technical resources to help you
- We investigate all quality concerns to ensure our products perform to the highest standards

If the product does not perform as described on this datasheet, we will offer a refund or replacement. For full details of the Abpromise, please visit <https://www.abcam.com/abpromise> or contact our technical team.

Terms and conditions

- Guarantee only valid for products bought direct from Abcam or one of our authorized distributors