

Product datasheet

Anti-Bone marrow stromal cell antigen 1 antibody [SY11B5] ab92395

[1 References](#) [2 Images](#)

Overview

Product name	Anti-Bone marrow stromal cell antigen 1 antibody [SY11B5]
Description	Mouse monoclonal [SY11B5] to Bone marrow stromal cell antigen 1
Host species	Mouse
Tested applications	Suitable for: Flow Cyt
Species reactivity	Reacts with: Human
Immunogen	Full length native protein (purified) corresponding to Bone marrow stromal cell antigen 1.
Positive control	Normal Human peripheral blood cells
General notes	<p>The Life Science industry has been in the grips of a reproducibility crisis for a number of years. Abcam is leading the way in addressing this with our range of recombinant monoclonal antibodies and knockout edited cell lines for gold-standard validation. Please check that this product meets your needs before purchasing.</p> <p>If you have any questions, special requirements or concerns, please send us an inquiry and/or contact our Support team ahead of purchase. Recommended alternatives for this product can be found below, along with publications, customer reviews and Q&As</p>

Properties

Form	Liquid
Storage instructions	Shipped at 4°C. Store at +4°C short term (1-2 weeks). Store at -20°C or -80°C. Avoid freeze / thaw cycle.
Storage buffer	pH: 7.20 Preservative: 0.09% Sodium azide Constituents: PBS, 0.87% Sodium chloride
Purity	Protein G purified
Clonality	Monoclonal
Clone number	SY11B5
Isotype	IgG1

Applications

The Abpromise guarantee

Our **Abpromise guarantee** covers the use of ab92395 in the following tested applications.

The application notes include recommended starting dilutions; optimal dilutions/concentrations should be determined by the end user.

Application	Abreviews	Notes
Flow Cyt		

Application notes

Flow Cyt: Use 0.5µg for 10⁶ cells.

Not yet tested in other applications.

Optimal dilutions/concentrations should be determined by the end user.

Target

Function

Synthesizes the second messengers cyclic ADP-ribose and nicotinate-adenine dinucleotide phosphate, the former a second messenger that elicits calcium release from intracellular stores. May be involved in pre-B-cell growth.

Tissue specificity

Widely expressed.

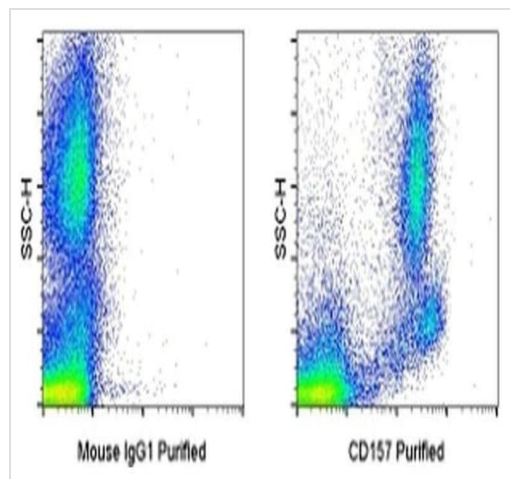
Sequence similarities

Belongs to the ADP-ribosyl cyclase family.

Cellular localization

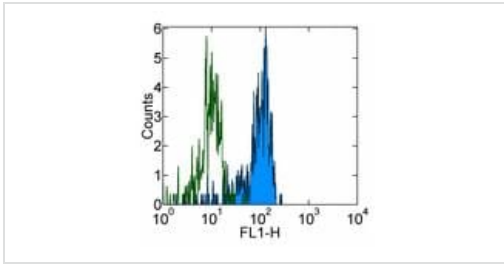
Cell membrane.

Images



Flow cytometry analysis labelling normal human peripheral blood cells with Mouse IgG1 K Isotype Control Purified (left) or ab92395 (right) at 0.25 µg, followed by F(ab')₂ Anti-Mouse IgG PE.

Flow Cytometry - Anti-Bone marrow stromal cell antigen 1 antibody [SY11B5] (ab92395)



Flow Cytometry - Anti-Bone marrow stromal cell antigen 1 antibody [SY11B5] (ab92395)

Staining of normal human peripheral blood cells with ab92395 at 0.25 μg (blue histogram), or purified Mouse IgG1k, isotype control at 0.25 μg (green histogram), followed by treatment with FITC anti-mouse IgG. Cells in the monocyte gate were used for analysis.

Please note: All products are "FOR RESEARCH USE ONLY. NOT FOR USE IN DIAGNOSTIC PROCEDURES"

Our Abpromise to you: Quality guaranteed and expert technical support

- Replacement or refund for products not performing as stated on the datasheet
- Valid for 12 months from date of delivery
- Response to your inquiry within 24 hours
- We provide support in Chinese, English, French, German, Japanese and Spanish
- Extensive multi-media technical resources to help you
- We investigate all quality concerns to ensure our products perform to the highest standards

If the product does not perform as described on this datasheet, we will offer a refund or replacement. For full details of the Abpromise, please visit <https://www.abcam.com/abpromise> or contact our technical team.

Terms and conditions

- Guarantee only valid for products bought direct from Abcam or one of our authorized distributors