

Product datasheet

Anti-Bovine Papilloma Virus E2 antibody [1E4] ab980

★★★★★ [2 Abreviews](#) [5 References](#) [1 Image](#)

Overview

Product name	Anti-Bovine Papilloma Virus E2 antibody [1E4]
Description	Mouse monoclonal [1E4] to Bovine Papilloma Virus E2
Host species	Mouse
Tested applications	Suitable for: WB, IP, ICC/IF
Species reactivity	Reacts with: Bovine papillomavirus
Immunogen	Mapped to amino acids 250-280.
Epitope	Not Determined.
General notes	<p>The Life Science industry has been in the grips of a reproducibility crisis for a number of years. Abcam is leading the way in addressing this with our range of recombinant monoclonal antibodies and knockout edited cell lines for gold-standard validation. Please check that this product meets your needs before purchasing.</p> <p>If you have any questions, special requirements or concerns, please send us an inquiry and/or contact our Support team ahead of purchase. Recommended alternatives for this product can be found below, along with publications, customer reviews and Q&As</p>

Properties

Form	Liquid
Storage instructions	Shipped at 4°C. Store at +4°C short term (1-2 weeks). Upon delivery aliquot. Store at -20°C or -80°C. Avoid freeze / thaw cycle.
Storage buffer	pH: 7.4 Constituent: 50% Glycerol (glycerin, glycerine)
Purity	Protein A purified
Clonality	Monoclonal
Clone number	1E4
Isotype	IgG1

Applications

The Abpromise guarantee Our **Abpromise guarantee** covers the use of ab980 in the following tested applications.

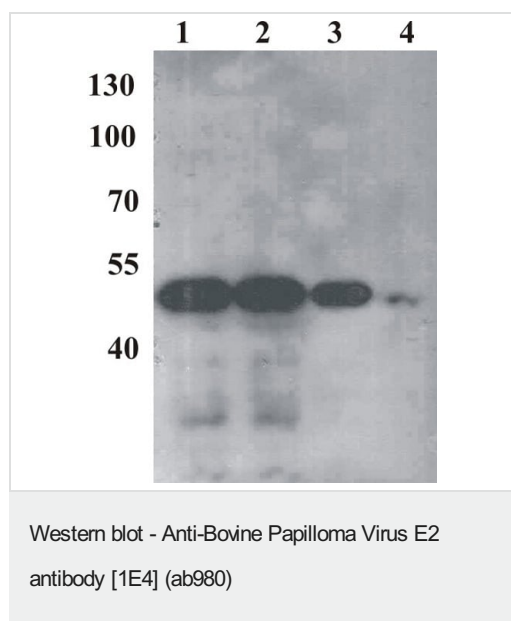
The application notes include recommended starting dilutions; optimal dilutions/concentrations should be determined by the end user.

Application	Abreviews	Notes
WB		1/1000 - 1/5000. Predicted molecular weight: 45 kDa. 1hr, RT. Dilute in a diluent containing 2% non-fat dry milk in TBST. (Background can be reduced by adding NaCl up to a concentration of 1.5 M.)
IP		Use at an assay dependent concentration. To isolate E2Tag-tagged proteins and associated proteins/protein binding partners. Use protein G-agarose.
ICC/IF		1/500 - 1/1000. 1hr, RT. Dilute in a diluent containing 1% BSA in PBS.

Target

Relevance	The bovine papilloma virus E2 protein is the master regulator of papillomavirus replication and transcription. Binds to the E2RE response element (5'-ACCNNNNNNGGT-3') present in multiple copies in the regulatory region. Can either activate or repress transcription depending on E2RE's position with regards to proximal promoter elements. Repression occurs by sterically hindering the assembly of the transcription initiation complex. The E1-E2 complex binds to the origin of DNA replication.
Cellular localization	Host cell nucleus

Images



All lanes : Anti-Bovine Papilloma Virus E2 antibody [1E4] (ab980)

Lane 1 : Purified recombinant Bovine Papillomavirus E2 protein at 15000 µg

Lane 2 : Purified recombinant Bovine Papillomavirus E2 protein at 10000 µg

Lane 3 : Purified recombinant Bovine Papillomavirus E2 protein at 5000 µg

Lane 4 : Purified recombinant Bovine Papillomavirus E2 protein at 1000 µg

Predicted band size: 45 kDa

Please note: All products are "FOR RESEARCH USE ONLY. NOT FOR USE IN DIAGNOSTIC PROCEDURES"

Our Abpromise to you: Quality guaranteed and expert technical support

- Replacement or refund for products not performing as stated on the datasheet
- Valid for 12 months from date of delivery
- Response to your inquiry within 24 hours

- We provide support in Chinese, English, French, German, Japanese and Spanish
- Extensive multi-media technical resources to help you
- We investigate all quality concerns to ensure our products perform to the highest standards

If the product does not perform as described on this datasheet, we will offer a refund or replacement. For full details of the Abpromise, please visit <https://www.abcam.com/abpromise> or contact our technical team.

Terms and conditions

- Guarantee only valid for products bought direct from Abcam or one of our authorized distributors