

Anti-Bovine Serum Albumin antibody [1C12] ab79827

[1 References](#) [2 Images](#)

Overview

Product name	Anti-Bovine Serum Albumin antibody [1C12]
Description	Mouse monoclonal [1C12] to Bovine Serum Albumin
Host species	Mouse
Specificity	This antibody reacts specifically with BSA. It does not cross react with Human Serum Albumin or Albumin from other species.
Tested applications	Suitable for: ELISA, WB
Species reactivity	Reacts with: Cow Does not react with: Rabbit, Human
Immunogen	Full length protein. This information is proprietary to Abcam and/or its suppliers.
Positive control	WB: Bovine serum albumin.
General notes	<p>The Life Science industry has been in the grips of a reproducibility crisis for a number of years. Abcam is leading the way in addressing this with our range of recombinant monoclonal antibodies and knockout edited cell lines for gold-standard validation. Please check that this product meets your needs before purchasing.</p> <p>If you have any questions, special requirements or concerns, please send us an inquiry and/or contact our Support team ahead of purchase. Recommended alternatives for this product can be found below, along with publications, customer reviews and Q&As</p>

Properties

Form	Liquid
Storage instructions	Shipped at 4°C. Upon delivery aliquot and store at -20°C. Avoid freeze / thaw cycles.
Storage buffer	Constituents: 1.21% Tris, 0.75% Glycine, 2% Sucrose
Purity	Protein A purified
Clonality	Monoclonal
Clone number	1C12
Isotype	IgG1
Light chain type	kappa

Applications

The Abpromise guarantee

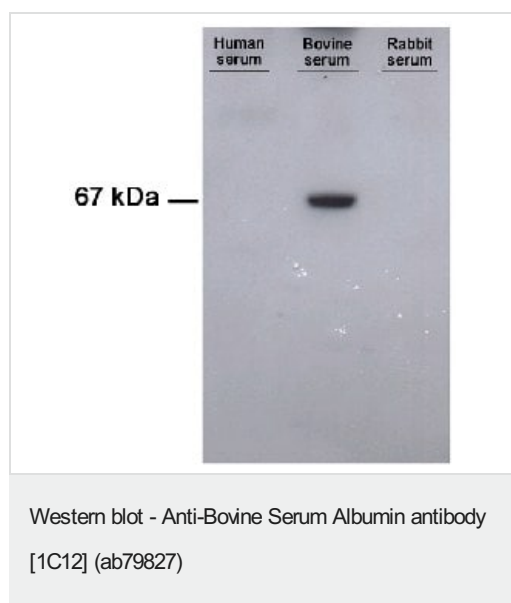
Our **Abpromise guarantee** covers the use of ab79827 in the following tested applications.

The application notes include recommended starting dilutions; optimal dilutions/concentrations should be determined by the end user.

Application	Abreviews	Notes
ELISA		1/20000 - 1/100000.
WB		1/2000 - 1/10000. Predicted molecular weight: 69 kDa.

Target

Images



All lanes : Anti-Bovine Serum Albumin antibody [1C12] (ab79827)
at 1/2000 dilution

Lane 1 : Human Serum

Lane 2 : Bovine Serum

Lane 3 : Rabbit Serum

Lysates/proteins at 10 µl per lane.

Secondary

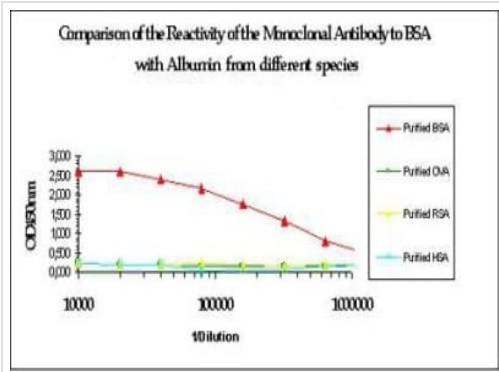
All lanes : Goat anti-mouse IgG (H+L) peroxidase conjugate at
1/4000 dilution

Predicted band size: 69 kDa

Observed band size: 67 kDa

Exposure time: 1 minute

Non-denaturing SDS-PAGE (7.5%).



Graph showing comparison of the reactivity of **ab79287** with Bovine Serum Albumin, Ovalbumin, Rabbit Serum Albumin and Human Serum Albumin.

ELISA - Anti-Bovine Serum Albumin antibody [1C12]
(ab79827)

Please note: All products are "FOR RESEARCH USE ONLY. NOT FOR USE IN DIAGNOSTIC PROCEDURES"

Our Abpromise to you: Quality guaranteed and expert technical support

- Replacement or refund for products not performing as stated on the datasheet
- Valid for 12 months from date of delivery
- Response to your inquiry within 24 hours
- We provide support in Chinese, English, French, German, Japanese and Spanish
- Extensive multi-media technical resources to help you
- We investigate all quality concerns to ensure our products perform to the highest standards

If the product does not perform as described on this datasheet, we will offer a refund or replacement. For full details of the Abpromise, please visit <https://www.abcam.com/abpromise> or contact our technical team.

Terms and conditions

- Guarantee only valid for products bought direct from Abcam or one of our authorized distributors