

## Product datasheet

# Anti-BTBD17 antibody [EPR9593(B)] ab138507

Recombinant RabMAb

[2 References](#) [4 Images](#)

### Overview

<b>Product name</b>	Anti-BTBD17 antibody [EPR9593(B)]
<b>Description</b>	Rabbit monoclonal [EPR9593(B)] to BTBD17
<b>Host species</b>	Rabbit
<b>Tested applications</b>	<b>Suitable for:</b> WB, IHC-P <b>Unsuitable for:</b> ICC/IF or IP
<b>Species reactivity</b>	<b>Reacts with:</b> Human
<b>Immunogen</b>	Synthetic peptide within Human BTBD17 aa 1-100. The exact sequence is proprietary.
<b>Positive control</b>	Human colon cancer, Human fetal kidney, and Human bladder lysates, Human kidney clear cell carcinoma and Human liver tissues.
<b>General notes</b>	<p>This product is a recombinant monoclonal antibody, which offers several advantages including:</p> <ul style="list-style-type: none"><li>- High batch-to-batch consistency and reproducibility</li><li>- Improved sensitivity and specificity</li><li>- Long-term security of supply</li><li>- Animal-free production</li></ul> <p>For more information <a href="#">see here</a>.</p> <p>Our RabMAb<sup>®</sup> technology is a patented hybridoma-based technology for making rabbit monoclonal antibodies. For details on our patents, please refer to <a href="#">RabMAb<sup>®</sup> patents</a>.</p> <p>Mouse, Rat: We have preliminary internal testing data to indicate this antibody may not react with these species. Please contact us for more information.</p>

### Properties

<b>Form</b>	Liquid
<b>Storage instructions</b>	Shipped at 4°C. Upon delivery aliquot and store at -20°C. Avoid freeze / thaw cycles.
<b>Storage buffer</b>	pH: 7.2 Preservative: 0.01% Sodium azide Constituents: 9% PBS, 40% Glycerol (glycerin, glycerine), 0.05% BSA, 50% Tissue culture supernatant
<b>Purity</b>	Protein A purified

<b>Clonality</b>	Monoclonal
<b>Clone number</b>	EPR9593(B)
<b>Isotype</b>	IgG

## Applications

**The Abpromise guarantee** Our **Abpromise guarantee** covers the use of ab138507 in the following tested applications. The application notes include recommended starting dilutions; optimal dilutions/concentrations should be determined by the end user.

Application	Abreviews	Notes
WB		1/1000 - 1/10000. Predicted molecular weight: 52 kDa.
IHC-P		1/50 - 1/100. Perform heat mediated antigen retrieval before commencing with IHC staining protocol.

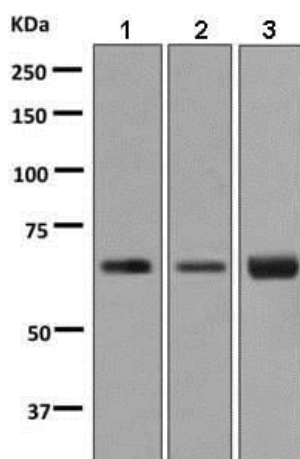
**Application notes** Is unsuitable for ICC/IF or IP.

## Target

**Sequence similarities** Contains 1 BACK (BTB/Kelch associated) domain.  
Contains 1 BTB (POZ) domain.

**Cellular localization** Secreted.

## Images



Western blot - Anti-BTBD17 antibody [EPR9593(B)] (ab138507)

**All lanes** : Anti-BTBD17 antibody [EPR9593(B)] (ab138507) at 1/1000 dilution

**Lane 1** : Human colon cancer lysate

**Lane 2** : Human fetal kidney tissue lysate

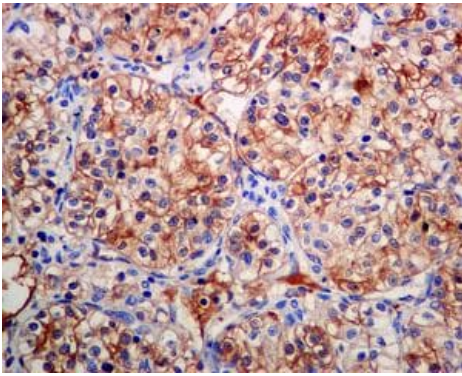
**Lane 3** : Human bladder lysate

Lysates/proteins at 10 µg per lane.

### Secondary

**All lanes** : HRP labelled goat anti-rabbit at 1/2000 dilution

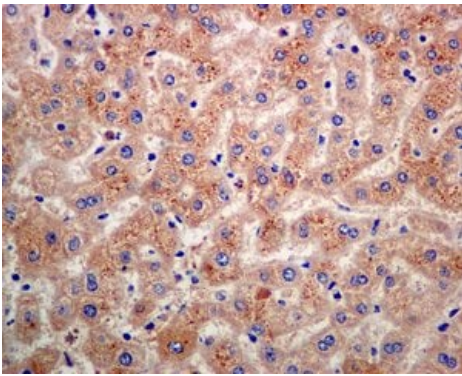
**Predicted band size:** 52 kDa



Immunohistochemistry (Formalin/PFA-fixed paraffin-embedded sections) - Anti-BTBD17 antibody [EPR9593(B)] (ab138507)

Immunohistochemical analysis of paraffin embedded Human kidney clear cell carcinoma tissue labelling BTBD17 with ab138507 antibody at a dilution of 1/50.

Perform heat mediated antigen retrieval before commencing with IHC staining protocol.



Immunohistochemistry (Formalin/PFA-fixed paraffin-embedded sections) - Anti-BTBD17 antibody [EPR9593(B)] (ab138507)

Immunohistochemical analysis of paraffin embedded Human liver tissue labelling BTBD17 with ab138507 antibody at a dilution of 1/50.

Perform heat mediated antigen retrieval before commencing with IHC staining protocol.

### Why choose a recombinant antibody?

- 

**Research with confidence**  
Consistent and reproducible results
- 

**Long-term and scalable supply**  
Recombinant technology
- 

**Success from the first experiment**  
Confirmed specificity
- 

**Ethical standards compliant**  
Animal-free production

Anti-BTBD17 antibody [EPR9593(B)] (ab138507)

**Please note:** All products are "FOR RESEARCH USE ONLY. NOT FOR USE IN DIAGNOSTIC PROCEDURES"

### **Our Abpromise to you: Quality guaranteed and expert technical support**

---

- Replacement or refund for products not performing as stated on the datasheet
- Valid for 12 months from date of delivery
- Response to your inquiry within 24 hours
  
- We provide support in Chinese, English, French, German, Japanese and Spanish
- Extensive multi-media technical resources to help you
- We investigate all quality concerns to ensure our products perform to the highest standards

If the product does not perform as described on this datasheet, we will offer a refund or replacement. For full details of the Abpromise, please visit <https://www.abcam.com/abpromise> or contact our technical team.

### **Terms and conditions**

---

- Guarantee only valid for products bought direct from Abcam or one of our authorized distributors