

## Product datasheet

### Anti-C Reactive Protein antibody [Y284] ab32412

Recombinant RabMAb

★★★★★ **6 Abreviews** **35 References** [7 Images](#)

#### Overview

<b>Product name</b>	Anti-C Reactive Protein antibody [Y284]
<b>Description</b>	Rabbit monoclonal [Y284] to C Reactive Protein
<b>Host species</b>	Rabbit
<b>Specificity</b>	This antibody recognises C Reactive Protein. This antibody is predicted to detect the splice isoform 2 as well as isoform 1.
<b>Tested applications</b>	<b>Suitable for:</b> WB, IP, IHC-P <b>Unsuitable for:</b> ICC/IF
<b>Species reactivity</b>	<b>Reacts with:</b> Human
<b>Immunogen</b>	Synthetic peptide. This information is proprietary to Abcam and/or its suppliers.
<b>Epitope</b>	ab32412 reacts with an epitope located in the C terminal region of C Reactive Protein.
<b>Positive control</b>	WB: Human serum and plasma lysates. IHC-P: Normal human liver tissue. IP: HepG2 whole cell lysate.
<b>General notes</b>	<p>This product is a recombinant monoclonal antibody, which offers several advantages including:</p> <ul style="list-style-type: none"> <li>- High batch-to-batch consistency and reproducibility</li> <li>- Improved sensitivity and specificity</li> <li>- Long-term security of supply</li> <li>- Animal-free production</li> </ul> <p>For more information <a href="#">see here</a>.</p> <p>Our RabMAb<sup>®</sup> technology is a patented hybridoma-based technology for making rabbit monoclonal antibodies. For details on our patents, please refer to <a href="#">RabMAb<sup>®</sup> patents</a>.</p> <p>Mouse, Rat: We have preliminary internal testing data to indicate this antibody may not react with these species. Please contact us for more information.</p>

#### Properties

<b>Form</b>	Liquid
<b>Storage instructions</b>	Shipped at 4°C. Store at +4°C short term (1-2 weeks). Upon delivery aliquot. Store at -20°C. Avoid freeze / thaw cycle.
<b>Storage buffer</b>	pH: 7.20

	Preservative: 0.01% Sodium azide
	Constituents: 59% PBS, 40% Glycerol, 0.05% BSA
<b>Purity</b>	Protein A purified
<b>Clonality</b>	Monoclonal
<b>Clone number</b>	Y284
<b>Isotype</b>	IgG

## Applications

**The Abpromise guarantee** Our **Abpromise guarantee** covers the use of ab32412 in the following tested applications. The application notes include recommended starting dilutions; optimal dilutions/concentrations should be determined by the end user.

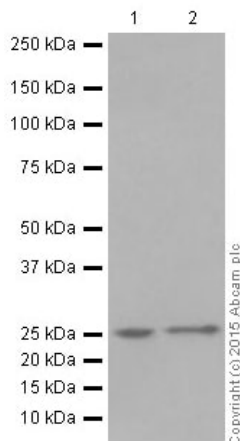
Application	Abreviews	Notes
<b>WB</b>	★★★★★ (1)	1/1000 - 1/2000. Predicted molecular weight: 25 kDa.
<b>IP</b>		1/30 - 1/50.
<b>IHC-P</b>	★★★★★ (3)	1/100 - 1/250. Perform heat mediated antigen retrieval with Tris/EDTA buffer pH 9.0 before commencing with IHC staining protocol.

**Application notes** Is unsuitable for ICC/IF.

## Target

<b>Function</b>	Displays several functions associated with host defense: it promotes agglutination, bacterial capsular swelling, phagocytosis and complement fixation through its calcium-dependent binding to phosphorylcholine. Can interact with DNA and histones and may scavenge nuclear material released from damaged circulating cells.
<b>Tissue specificity</b>	Found in plasma.
<b>Sequence similarities</b>	Belongs to the pentaxin family. Contains 1 pentaxin domain.
<b>Cellular localization</b>	Secreted.

## Images



Western blot - Anti-C Reactive Protein antibody  
[Y284] (ab32412)

**All lanes :** Anti-C Reactive Protein antibody [Y284] (ab32412) at 1/2000 dilution (purified)

**Lane 1 :** Human serum

**Lane 2 :** Human plasma

Lysates/proteins at 20 µg per lane.

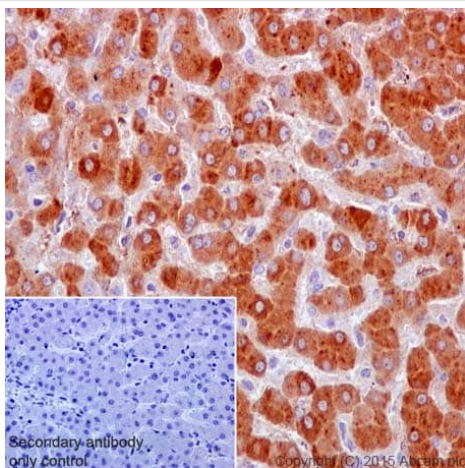
#### Secondary

**All lanes :** HRP-conjugated anti-rabbit IgG, specific to the non-reduced form of IgG at 1/50000 dilution

**Predicted band size:** 25 kDa

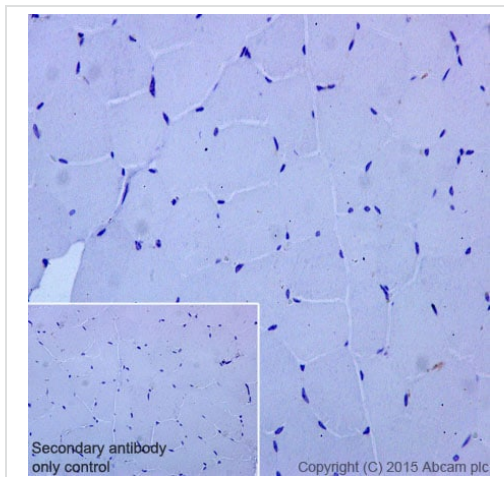
**Observed band size:** 27 kDa

Blocking and dilution buffer: 5% NFDM/TBST.



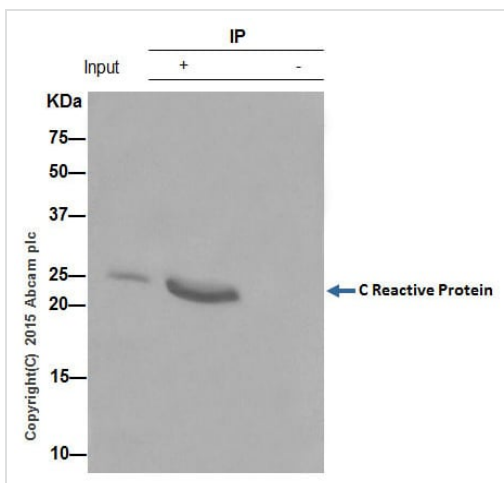
Immunohistochemistry (Formalin/PFA-fixed paraffin-embedded sections) - Anti-C Reactive Protein antibody [Y284] (ab32412)

Immunohistochemistry (Formalin/PFA-fixed paraffin-embedded sections) analysis of human liver tissue labelling C Reactive Protein with purified ab32412 at 1/100. Heat mediated antigen retrieval was performed using Tris/EDTA buffer pH 9. [ab97051](#), a HRP-conjugated goat anti-rabbit IgG (H+L) was used as the secondary antibody (1/500). Negative control using PBS instead of primary antibody. Counterstained with hematoxylin.



Immunohistochemistry (Formalin/PFA-fixed paraffin-embedded sections) - Anti-C Reactive Protein antibody [Y284] (ab32412)

Immunohistochemistry (Formalin/PFA-fixed paraffin-embedded sections) analysis of human skeletal muscle tissue labelling C Reactive Protein with purified ab32412 at 1/100. Heat mediated antigen retrieval was performed using Tris/EDTA buffer pH 9. **ab97051**, a HRP-conjugated goat anti-rabbit IgG (H+L) was used as the secondary antibody (1/500). Negative control using PBS instead of primary antibody. Counterstained with hematoxylin.



Immunoprecipitation - Anti-C Reactive Protein antibody [Y284] (ab32412)

ab32412 (purified) at 1/30 immunoprecipitating C Reactive Protein in HepG2 (human liver hepatocellular carcinoma cell line) whole cell lysate.

Lane 1 (input): HepG2 whole cell lysate (10µg)

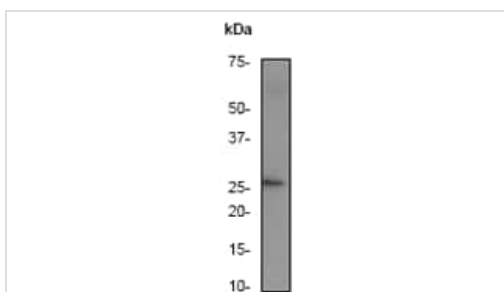
Lane 2 (+): ab32412 + HepG2 whole cell lysate.

Lane 3 (-): Rabbit monoclonal IgG (**ab172730**) instead of ab32412 in HepG2 whole cell lysate.

For western blotting, a HRP-conjugated anti-rabbit IgG, specific to the non-reduced form of IgG was used as the secondary antibody (1/1500).

Blocking buffer and concentration: 5% NFDM/TBST.

Diluting buffer and concentration: 5% NFDM /TBST.

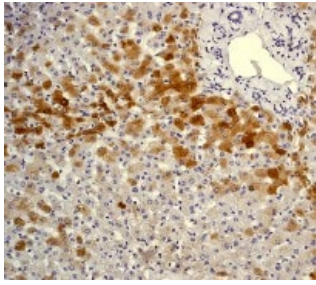


Western blot - Anti-C Reactive Protein antibody [Y284] (ab32412)

Anti-C Reactive Protein antibody [Y284] (ab32412) at 1/1000 dilution (unpurified) + Human serum

**Predicted band size:** 25 kDa

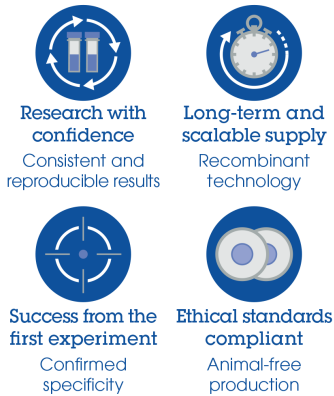
**Observed band size:** 27 kDa



Immunohistochemistry (Formalin/PFA-fixed paraffin-embedded) analysis of human normal liver tissue labelling C Reactive Protein using unpurified ab32412 at a dilution of 1/100.

Immunohistochemistry (Formalin/PFA-fixed paraffin-embedded sections) - Anti-C Reactive Protein antibody [Y284] (ab32412)

Why choose a recombinant antibody?



Anti-C Reactive Protein antibody [Y284] (ab32412)

**Please note:** All products are "FOR RESEARCH USE ONLY. NOT FOR USE IN DIAGNOSTIC PROCEDURES"

### Our Abpromise to you: Quality guaranteed and expert technical support

- Replacement or refund for products not performing as stated on the datasheet
- Valid for 12 months from date of delivery
- Response to your inquiry within 24 hours
- We provide support in Chinese, English, French, German, Japanese and Spanish
- Extensive multi-media technical resources to help you
- We investigate all quality concerns to ensure our products perform to the highest standards

If the product does not perform as described on this datasheet, we will offer a refund or replacement. For full details of the Abpromise, please visit <https://www.abcam.com/abpromise> or contact our technical team.

### Terms and conditions

- Guarantee only valid for products bought direct from Abcam or one of our authorized distributors