


## Product datasheet

### Anti-C1D antibody [EPR11122] ab166897

Recombinant RabMAb

4 Images

#### Overview

Product name	Anti-C1D antibody [EPR11122]
Description	Rabbit monoclonal [EPR11122] to C1D
Host species	Rabbit
Tested applications	<b>Suitable for:</b> WB, ICC/IF <b>Unsuitable for:</b> IHC-P or IP
Species reactivity	<b>Reacts with:</b> Human <b>Predicted to work with:</b> Mouse, Rat 
Immunogen	Synthetic peptide. This information is proprietary to Abcam and/or its suppliers.
Positive control	WB: Human fetal heart, heart and skeletal muscle lysates. ICC/IF: MCF7 cells.
General notes	<p>This product is a recombinant monoclonal antibody, which offers several advantages including:</p> <ul style="list-style-type: none"> <li>- High batch-to-batch consistency and reproducibility</li> <li>- Improved sensitivity and specificity</li> <li>- Long-term security of supply</li> <li>- Animal-free production</li> </ul> <p>For more information <a href="#">see here</a>.</p> <p>Our RabMAb<sup>®</sup> technology is a patented hybridoma-based technology for making rabbit monoclonal antibodies. For details on our patents, please refer to <a href="#">RabMAb<sup>®</sup> patents</a>.</p>

#### Properties

Form	Liquid
Storage instructions	Shipped at 4°C. Store at -20°C.
Storage buffer	pH: 7.2 Preservative: 0.01% Sodium azide Constituents: 59% PBS, 40% Glycerol (glycerin, glycerine), 0.5% BSA
Purity	Protein A purified
Clonality	Monoclonal
Clone number	EPR11122
Isotype	IgG

Applications

**The Abpromise guarantee** Our **Abpromise guarantee** covers the use of ab166897 in the following tested applications. The application notes include recommended starting dilutions; optimal dilutions/concentrations should be determined by the end user.

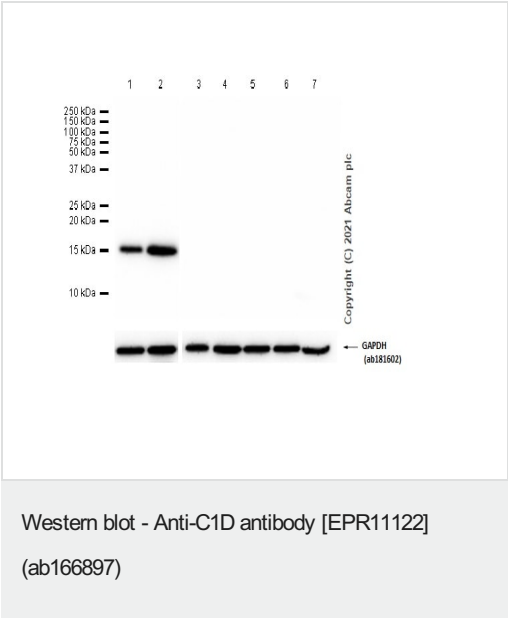
Application	Abreviews	Notes
WB		1/1000 - 1/5000. Predicted molecular weight: 16 kDa.
ICC/IF		1/100 - 1/250.

**Application notes** Is unsuitable for IHC-P or IP.

Target

<b>Function</b>	Plays a role in the recruitment of the RNA exosome complex to pre-rRNA to mediate the 3'-5' end processing of the 5.8S rRNA; this function may include MPHOSPH6. Can activate PRKDC not only in the presence of linear DNA but also in the presence of supercoiled DNA. Can induce apoptosis in a p53/TP53 dependent manner. May regulate the TRAX/TSN complex formation. Potentiates transcriptional repression by NR1D1 and THRB.
<b>Tissue specificity</b>	Ubiquitous. Expressed at very high levels in the hippocampus, medulla oblongata, mammary gland, thyroid and salivary gland. Expressed at high levels in the fetal; lung, liver and kidney. Expressed at low levels in skeletal muscle, appendix, heart, lung and colon.
<b>Sequence similarities</b>	Belongs to the C1D family.
<b>Post-translational modifications</b>	Phosphorylated by PRKDC.
<b>Cellular localization</b>	Cytoplasm. Nucleus > nucleolus. EXOSC10 is required for nucleolar localization.

Images



**All lanes :** Anti-C1D antibody [EPR11122] (ab166897) at 1/1000 dilution

- Lane 1 :** Human heart tissue lysate with NFDN /TBST
- Lane 2 :** Human skeletal muscle tissue lysate with NFDN /TBST
- Lane 3 :** Human thyroid tissue lysate with NFDN /TBST
- Lane 4 :** Hela (Human cervix adenocarcinoma epithelial cell) whole cell lysate with NFDN /TBST
- Lane 5 :** HT-1080 (Human fibrosarcoma epithelial cell) whole cell lysate with NFDN /TBST
- Lane 6 :** MDA-MB-231 (Human breast adenocarcinoma epithelial cell) whole cell lysate with NFDN /TBST
- Lane 7 :** MCF-7 (Human breast adenocarcinoma epithelial cell) whole cell lysate with NFDN /TBST

Lysates/proteins at 20 µg per lane.

Blocking peptides at 5 % per lane.

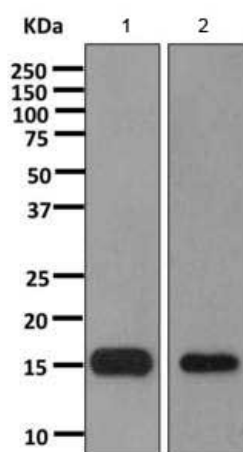
### Secondary

**All lanes :** Goat Anti-Rabbit IgG (HRP) with minimal cross-reactivity with human IgG at 1/20000 dilution

**Predicted band size:** 16 kDa

**Observed band size:** 16 kDa

**Exposure time:** 1 second



Western blot - Anti-C1D antibody [EPR11122]  
(ab166897)

**All lanes :** Anti-C1D antibody [EPR11122] (ab166897) at 1/1000 dilution

**Lane 1 :** Human fetal heart lysate

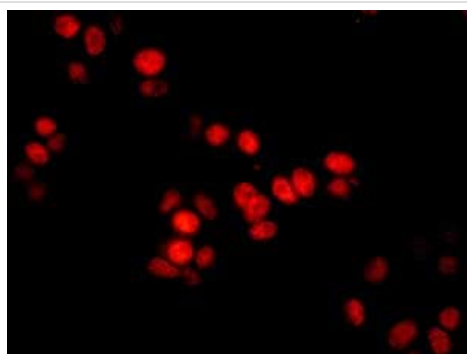
**Lane 2 :** Human skeletal muscle lysate

Lysates/proteins at 10 µg per lane.

### Secondary

**All lanes :** Goat anti-rabbit HRP antibody at 1/2000 dilution

**Predicted band size:** 16 kDa



Immunocytochemistry/ Immunofluorescence - Anti-C1D antibody [EPR11122] (ab166897)

Immunofluorescent analysis of MCF7 cells labeling C1D using ab166897 at 1/100 dilution.

### Why choose a recombinant antibody?



**Research with confidence**  
Consistent and reproducible results



**Long-term and scalable supply**  
Recombinant technology



**Success from the first experiment**  
Confirmed specificity



**Ethical standards compliant**  
Animal-free production

Anti-C1D antibody [EPR11122] (ab166897)

**Please note:** All products are "FOR RESEARCH USE ONLY. NOT FOR USE IN DIAGNOSTIC PROCEDURES"

### Our Abpromise to you: Quality guaranteed and expert technical support

---

- Replacement or refund for products not performing as stated on the datasheet
- Valid for 12 months from date of delivery
- Response to your inquiry within 24 hours
- We provide support in Chinese, English, French, German, Japanese and Spanish
- Extensive multi-media technical resources to help you
- We investigate all quality concerns to ensure our products perform to the highest standards

If the product does not perform as described on this datasheet, we will offer a refund or replacement. For full details of the Abpromise, please visit <https://www.abcam.com/abpromise> or contact our technical team.

### Terms and conditions

---

- Guarantee only valid for products bought direct from Abcam or one of our authorized distributors