

Product datasheet

Anti-C1q antibody [7H8] ab11861

Recombinant

★★★★★ **9 Abreviews** **14 References** [1 Image](#)

Overview

Product name	Anti-C1q antibody [7H8]
Description	Rat monoclonal [7H8] to C1q
Host species	Rat
Specificity	Immunization schedule and immunogen used has been described in the following article: Wasiliu, M et al; Monoclonal antibodies to complement components without the need of their prior purification. I. Antibodies to mouse C1q. Hybridoma 1989, 8 (6): 615.
Tested applications	Suitable for: ICC/IF, ELISA, IHC-FoFr, IHC-Fr Unsuitable for: IHC-P or WB
Species reactivity	Reacts with: Mouse, Human
Immunogen	Tissue, cells or virus. This information is proprietary to Abcam and/or its suppliers.
Positive control	IHC-Fr: P90 Wild-type mouse.
General notes	<p>This product was switched from a hybridoma to a recombinant production format on 25th October 2021.</p> <p>This product is a recombinant monoclonal antibody, which offers several advantages including:</p> <ul style="list-style-type: none">- High batch-to-batch consistency and reproducibility- Improved sensitivity and specificity- Long-term security of supply- Animal-free production <p>For more information see here.</p>

Properties

Form	Liquid
Storage instructions	Shipped at 4°C. Store at +4°C short term (1-2 weeks). Upon delivery aliquot. Store at -20°C long term. Avoid freeze / thaw cycle.
Storage buffer	Preservative: 0.01% Sodium azide Constituents: 59% PBS, 0.05% BSA, 40% Glycerol (glycerin, glycerine)
Purity	Protein A purified
Clonality	Monoclonal

Clone number	7H8
Isotype	IgG1
Light chain type	kappa

Applications

The Abpromise guarantee Our **Abpromise guarantee** covers the use of ab11861 in the following tested applications. The application notes include recommended starting dilutions; optimal dilutions/concentrations should be determined by the end user.

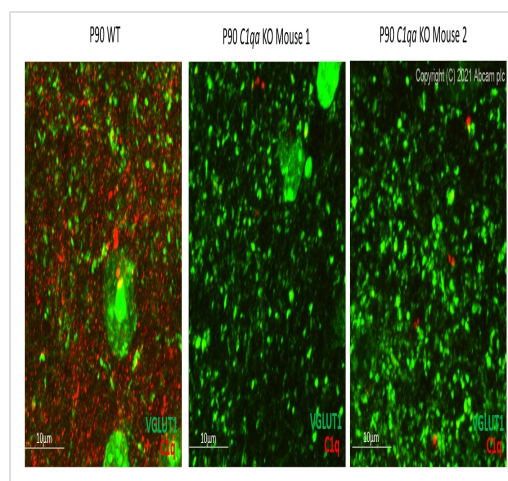
Application	Abreviews	Notes
ICC/IF	★★★★★ (2)	Use at an assay dependent concentration.
ELISA	★★★★★ (1)	Use at an assay dependent concentration.
IHC-FoFr	★★★★★ (1)	Use at an assay dependent concentration.
IHC-Fr		1/500.

Application notes Is unsuitable for IHC-P or WB.

Target

Function	C1q associates with the proenzymes C1r and C1s to yield C1, the first component of the serum complement system. The collagen-like regions of C1q interact with the Ca(2+)-dependent C1r(2)C1s(2) proenzyme complex, and efficient activation of C1 takes place on interaction of the globular heads of C1q with the Fc regions of IgG or IgM antibody present in immune complexes.
Involvement in disease	Defects in C1QA are a cause of complement component C1q deficiency (C1QD) [MIM:613652]. A rare defect resulting in C1 deficiency and impaired activation of the complement classical pathway. C1 deficiency generally leads to severe immune complex disease with features of systemic lupus erythematosus and glomerulonephritis.
Sequence similarities	Contains 1 C1q domain. Contains 1 collagen-like domain.
Post-translational modifications	O-linked glycans consist of Glc-Gal disaccharides bound to the oxygen atom of post-translationally added hydroxyl groups.
Cellular localization	Secreted.

Images



Immunohistochemistry (Frozen sections) - Anti-C1q antibody [7H8] (ab11861)

This image is kindly provided by Dr. Daniel Wilton from Boston Children's Hospital.

Positive staining on P90 Wild-type mouse, and no staining on P90 C1qa Knockout Mouse . Primary antibody was applied at a dilution of 1/500 and anti-VGLUT1 antibody. Secondary antibodies including goat anti rabbit IgG (H+L) highly cross-adsorbed Alexa Fluor 594 and goat anti guinea pig IgG (H+L) highly cross-adsorbed Alexa Fluor 488 were also employed at a dilution of 1/500.

Please note: All products are "FOR RESEARCH USE ONLY. NOT FOR USE IN DIAGNOSTIC PROCEDURES"

Our Abpromise to you: Quality guaranteed and expert technical support

- Replacement or refund for products not performing as stated on the datasheet
- Valid for 12 months from date of delivery
- Response to your inquiry within 24 hours
- We provide support in Chinese, English, French, German, Japanese and Spanish
- Extensive multi-media technical resources to help you
- We investigate all quality concerns to ensure our products perform to the highest standards

If the product does not perform as described on this datasheet, we will offer a refund or replacement. For full details of the Abpromise, please visit <https://www.abcam.com/abpromise> or contact our technical team.

Terms and conditions

- Guarantee only valid for products bought direct from Abcam or one of our authorized distributors