

## Product datasheet

### Anti-C1QA antibody [EPR2980Y] $\alpha$ b76425

Recombinant RabMAb

[1 References](#) [3 Images](#)

#### Overview

<b>Product name</b>	Anti-C1QA antibody [EPR2980Y]
<b>Description</b>	Rabbit monoclonal [EPR2980Y] to C1QA
<b>Host species</b>	Rabbit
<b>Tested applications</b>	<b>Suitable for:</b> WB, IHC-P <b>Unsuitable for:</b> Flow Cyt (Intra) or IP
<b>Species reactivity</b>	<b>Reacts with:</b> Human
<b>Immunogen</b>	Synthetic peptide within Human C1QA aa 200-300 (C terminal). The exact sequence is proprietary.
<b>Positive control</b>	Human plasma lysate; human tonsil tissue.
<b>General notes</b>	<p>This product is a recombinant monoclonal antibody, which offers several advantages including:</p> <ul style="list-style-type: none"> <li>- High batch-to-batch consistency and reproducibility</li> <li>- Improved sensitivity and specificity</li> <li>- Long-term security of supply</li> <li>- Animal-free production</li> </ul> <p>For more information <a href="#">see here</a>.</p> <p>Our RabMAb<sup>®</sup> technology is a patented hybridoma-based technology for making rabbit monoclonal antibodies. For details on our patents, please refer to <a href="#">RabMAb<sup>®</sup> patents</a>.</p> <p>Mouse, Rat: We have preliminary internal testing data to indicate this antibody may not react with these species. Please contact us for more information.</p>

#### Properties

<b>Form</b>	Liquid
<b>Storage instructions</b>	Shipped at 4°C. Upon delivery aliquot and store at -20°C. Avoid freeze / thaw cycles.
<b>Storage buffer</b>	<p>pH: 7.20</p> <p>Preservative: 0.05% Sodium azide</p> <p>Constituents: 0.1% BSA, 40% Glycerol (glycerin, glycerine), 9.85% Tris glycine, 50% Tissue culture supernatant</p>
<b>Purity</b>	Protein A purified

<b>Clonality</b>	Monoclonal
<b>Clone number</b>	EPR2980Y
<b>Isotype</b>	IgG

## Applications

**The Abpromise guarantee** Our **Abpromise guarantee** covers the use of ab76425 in the following tested applications. The application notes include recommended starting dilutions; optimal dilutions/concentrations should be determined by the end user.

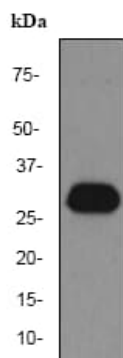
Application	Abreviews	Notes
<b>WB</b>		1/500 - 1/1000. Detects a band of approximately 26 kDa (predicted molecular weight: 26 kDa).
<b>IHC-P</b>		1/100 - 1/250. Perform heat mediated antigen retrieval before commencing with IHC staining protocol. Use of HRP-conjugated or polymerized HRP secondary antibodies, stronger signals have been found using the polymerized HRP secondary.

**Application notes** Is unsuitable for Flow Cyt (Intra) or IP.

## Target

<b>Function</b>	C1q associates with the proenzymes C1r and C1s to yield C1, the first component of the serum complement system. The collagen-like regions of C1q interact with the Ca(2+)-dependent C1r(2)C1s(2) proenzyme complex, and efficient activation of C1 takes place on interaction of the globular heads of C1q with the Fc regions of IgG or IgM antibody present in immune complexes.
<b>Involvement in disease</b>	Defects in C1QA are the cause of complement component C1qA deficiency (C1QAD) [MIM:120550]. A rare defect resulting in C1 deficiency and impaired activation of the complement classical pathway. C1 deficiency generally leads to severe immune complex disease with features of systemic lupus erythematosus and glomerulonephritis.
<b>Sequence similarities</b>	Contains 1 C1q domain. Contains 1 collagen-like domain.
<b>Post-translational modifications</b>	O-linked glycans consist of Glc-Gal disaccharides bound to the oxygen atom of post-translationally added hydroxyl groups.
<b>Cellular localization</b>	Secreted.

## Images



Western blot - Anti-C1QA antibody [EPR2980Y]  
(ab76425)

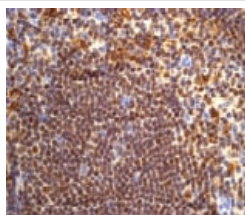
Anti-C1QA antibody [EPR2980Y] (ab76425) at 1/1000 dilution +  
human plasma lysate at 10 µg

### Secondary

goat anti-rabbit HRP at 1/1000 dilution

**Predicted band size:** 26 kDa

**Observed band size:** 26 kDa



Immunohistochemistry (Formalin/PFA-fixed paraffin-  
embedded sections) - Anti-C1QA antibody  
[EPR2980Y] (ab76425)

ab76425 at 1/100 dilution staining C1q in human tonsils by  
Immunohistochemistry, Paraffin-embedded tissue.

Perform heat mediated antigen retrieval before commencing with  
IHC staining protocol.

### Why choose a recombinant antibody?



**Research with  
confidence**  
Consistent and  
reproducible results



**Long-term and  
scalable supply**  
Recombinant  
technology



**Success from the  
first experiment**  
Confirmed  
specificity



**Ethical standards  
compliant**  
Animal-free  
production

Anti-C1QA antibody [EPR2980Y] (ab76425)

### **Our Abpromise to you: Quality guaranteed and expert technical support**

---

- Replacement or refund for products not performing as stated on the datasheet
- Valid for 12 months from date of delivery
- Response to your inquiry within 24 hours
- We provide support in Chinese, English, French, German, Japanese and Spanish
- Extensive multi-media technical resources to help you
- We investigate all quality concerns to ensure our products perform to the highest standards

If the product does not perform as described on this datasheet, we will offer a refund or replacement. For full details of the Abpromise, please visit <https://www.abcam.com/abpromise> or contact our technical team.

### **Terms and conditions**

---

- Guarantee only valid for products bought direct from Abcam or one of our authorized distributors