


### Anti-C1s antibody ab87986

[1 References](#) [1 Image](#)

#### Overview

<b>Product name</b>	Anti-C1s antibody
<b>Description</b>	Rabbit polyclonal to C1s
<b>Host species</b>	Rabbit
<b>Tested applications</b>	<b>Suitable for:</b> WB
<b>Species reactivity</b>	<b>Reacts with:</b> Human <b>Predicted to work with:</b> Mouse 
<b>Immunogen</b>	Synthetic peptide corresponding to Human C1s aa 650 to the C-terminus (C terminal) conjugated to keyhole limpet haemocyanin. (Peptide available as <a href="#">ab88235</a> )
<b>Positive control</b>	This antibody gave a positive signal in Human Plasma Total Protein.
<b>General notes</b>	<p>The Life Science industry has been in the grips of a reproducibility crisis for a number of years. Abcam is leading the way in addressing this with our range of recombinant monoclonal antibodies and knockout edited cell lines for gold-standard validation. Please check that this product meets your needs before purchasing.</p> <p>If you have any questions, special requirements or concerns, please send us an inquiry and/or contact our Support team ahead of purchase. Recommended alternatives for this product can be found below, along with publications, customer reviews and Q&amp;As</p>

#### Properties

<b>Form</b>	Liquid
<b>Storage instructions</b>	Shipped at 4°C. Store at +4°C short term (1-2 weeks). Upon delivery aliquot. Store at -20°C or -80°C. Avoid freeze / thaw cycle.
<b>Storage buffer</b>	pH: 7.40 Preservative: 0.02% Sodium azide Constituent: PBS  Batches of this product that have a concentration < 1mg/ml may have BSA added as a stabilising agent. If you would like information about the formulation of a specific lot, please contact our scientific support team who will be happy to help.
<b>Purity</b>	Immunogen affinity purified

<b>Clonality</b>	Polyclonal
<b>Isotype</b>	IgG

## Applications

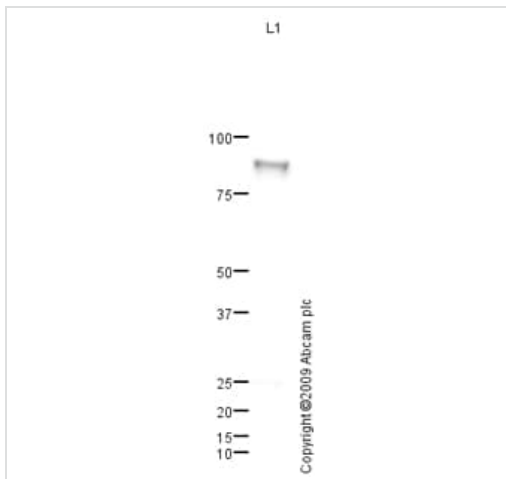
**The Abpromise guarantee** Our **Abpromise guarantee** covers the use of ab87986 in the following tested applications. The application notes include recommended starting dilutions; optimal dilutions/concentrations should be determined by the end user.

Application	Abreviews	Notes
<b>WB</b>		Use a concentration of 1 µg/ml. Detects a band of approximately 90 kDa (predicted molecular weight: 76 kDa).

## Target

<b>Function</b>	C1s B chain is a serine protease that combines with C1q and C1s to form C1, the first component of the classical pathway of the complement system. C1r activates C1s so that it can, in turn, activate C2 and C4.
<b>Involvement in disease</b>	Defects in C1S are the cause of complement component C1s deficiency (C1SD) [MIM:613783]. A rare defect resulting in C1 deficiency and impaired activation of the complement classical pathway. C1 deficiency generally leads to severe immune complex disease with features of systemic lupus erythematosus and glomerulonephritis.
<b>Sequence similarities</b>	Belongs to the peptidase S1 family. Contains 2 CUB domains. Contains 1 EGF-like domain. Contains 1 peptidase S1 domain. Contains 2 Sushi (CCP/SCR) domains.
<b>Post-translational modifications</b>	The iron and 2-oxoglutarate dependent 3-hydroxylation of aspartate and asparagine is (R) stereospecific within EGF domains.

## Images



Western blot - Anti-C1s antibody (ab87986)

Anti-C1s antibody (ab87986) at 1 µg/ml + Human Plasma Total Protein Lysate at 10 µg

### Secondary

Goat polyclonal to Rabbit IgG - H&L - Pre-Adsorbed (HRP) at 1/3000 dilution

Developed using the ECL technique.

Performed under reducing conditions.

**Predicted band size:** 76 kDa

**Observed band size:** 88 kDa

**Exposure time:** 3 minutes

The Complement C1s subcomponent protein contains a number of potential glycosylation sites (SwissProt) which may explain its migration at a higher molecular weight than predicted. Abcam welcomes customer feedback and would appreciate any comments regarding this product and the data presented above.

**Please note:** All products are "FOR RESEARCH USE ONLY. NOT FOR USE IN DIAGNOSTIC PROCEDURES"

### Our Abpromise to you: Quality guaranteed and expert technical support

- Replacement or refund for products not performing as stated on the datasheet
- Valid for 12 months from date of delivery
- Response to your inquiry within 24 hours
- We provide support in Chinese, English, French, German, Japanese and Spanish
- Extensive multi-media technical resources to help you
- We investigate all quality concerns to ensure our products perform to the highest standards

If the product does not perform as described on this datasheet, we will offer a refund or replacement. For full details of the Abpromise, please visit <https://www.abcam.com/abpromise> or contact our technical team.

### Terms and conditions

- Guarantee only valid for products bought direct from Abcam or one of our authorized distributors