

Product datasheet

Anti-Calcium-independent Phospholipase A2/PLA2G6 antibody ab104416

[3 Images](#)

Overview

Product name	Anti-Calcium-independent Phospholipase A2/PLA2G6 antibody
Description	Rabbit polyclonal to Calcium-independent Phospholipase A2/PLA2G6
Host species	Rabbit
Specificity	Reactive against mammalian transfected lysate.
Tested applications	Suitable for: WB
Species reactivity	Reacts with: Mouse, Human
Immunogen	Recombinant full length protein within Human Calcium-independent Phospholipase A2/PLA2G6. The exact immunogen sequence used to generate this antibody is proprietary information. If additional detail on the immunogen is needed to determine the suitability of the antibody for your needs, please contact our Scientific Support team to discuss your requirements. Database link: NP_001004426.1
Positive control	Human kidney tissue lysate, Mouse kidney tissue lysate, Transfected 293T cell lysate
General notes	<p>The Life Science industry has been in the grips of a reproducibility crisis for a number of years. Abcam is leading the way in addressing this with our range of recombinant monoclonal antibodies and knockout edited cell lines for gold-standard validation. Please check that this product meets your needs before purchasing.</p> <p>If you have any questions, special requirements or concerns, please send us an inquiry and/or contact our Support team ahead of purchase. Recommended alternatives for this product can be found below, along with publications, customer reviews and Q&As</p>

Properties

Form	Liquid
Storage instructions	Shipped at 4°C. Upon delivery aliquot. Store at -20°C or -80°C. Avoid freeze / thaw cycle.
Storage buffer	pH: 7.40 Constituent: 100% PBS
Purity	Protein A purified
Clonality	Polyclonal
Isotype	IgG

Applications

The Abpromise guarantee

Our **Abpromise guarantee** covers the use of ab104416 in the following tested applications.

The application notes include recommended starting dilutions; optimal dilutions/concentrations should be determined by the end user.

Application	Abreviews	Notes
WB		Use a concentration of 1 µg/ml. Predicted molecular weight: 90 kDa.

Target

Function

Catalyzes the release of fatty acids from phospholipids. It has been implicated in normal phospholipid remodeling, nitric oxide-induced or vasopressin-induced arachidonic acid release and in leukotriene and prostaglandin production. May participate in fas mediated apoptosis and in regulating transmembrane ion flux in glucose-stimulated B-cells. Has a role in cardiolipin (CL) deacylation. Required for both speed and directionality of monocyte MCP1/CCL2-induced chemotaxis through regulation of F-actin polymerization at the pseudopods. Isoform ankyrin-iPLA2-1 and isoform ankyrin-iPLA2-2, which lack the catalytic domain, are probably involved in the negative regulation of iPLA2 activity.

Tissue specificity

Four different transcripts were found to be expressed in a distinct tissue distribution.

Involvement in disease

Neurodegeneration with brain iron accumulation 2B
Neurodegeneration with brain iron accumulation 2A
Parkinson disease 14

Sequence similarities

Contains 7 ANK repeats.
Contains 1 patatin domain.

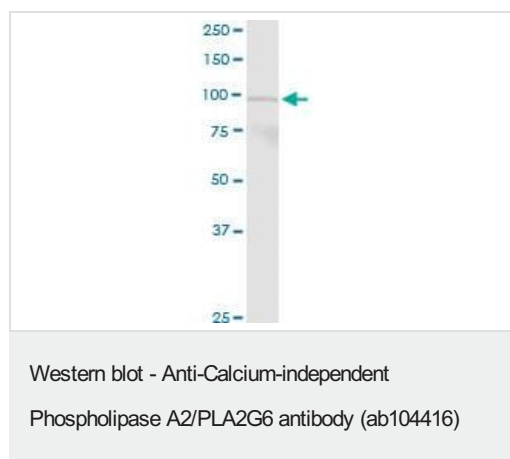
Cellular localization

Cytoplasm and Membrane. Recruited to the membrane-enriched pseudopod upon MCP1/CCL2 stimulation in monocytes.

Form

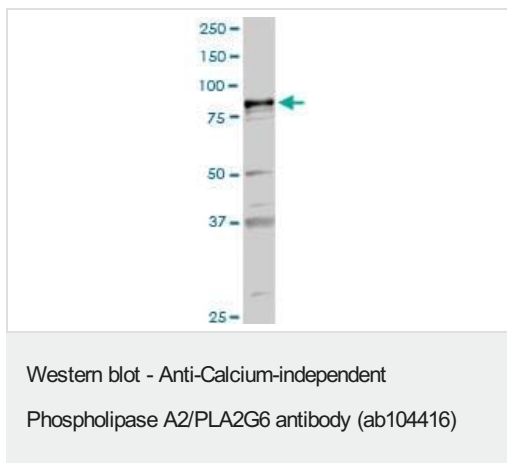
The isoform LH-iPLA2 is located at the membrane. The isoform SH-iPLA2 is cytoplasmic.

Images



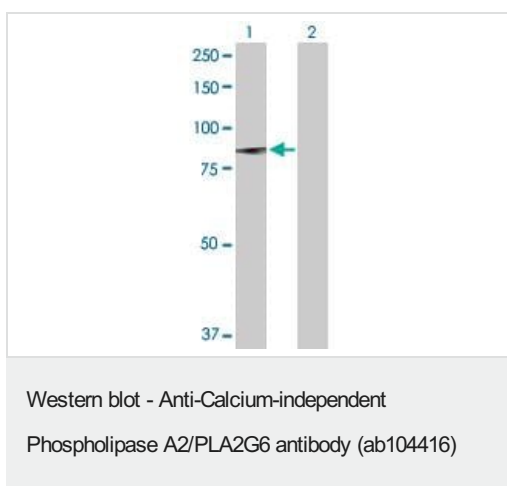
Anti-Calcium-independent Phospholipase A2/PLA2G6 antibody
(ab104416) at 1 µg/ml + Human kidney tissue lysate at 50 µg

Predicted band size: 90 kDa



Anti-Calcium-independent Phospholipase A2/PLA2G6 antibody (ab104416) at 1 µg/ml + Mouse kidney tissue lysate at 50 µg

Predicted band size: 90 kDa



All lanes : Anti-Calcium-independent Phospholipase A2/PLA2G6 antibody (ab104416) at 1 µg/ml

Lane 1 : Calcium-independent Phospholipase A2/PLA2G6 transfected 293T lysate

Lane 2 : Non-transfected 293T lysate

Lysates/proteins at 25 µg per lane.

Predicted band size: 90 kDa

Observed band size: 84 kDa

Please note: All products are "FOR RESEARCH USE ONLY. NOT FOR USE IN DIAGNOSTIC PROCEDURES"

Our Abpromise to you: Quality guaranteed and expert technical support

- Replacement or refund for products not performing as stated on the datasheet
- Valid for 12 months from date of delivery
- Response to your inquiry within 24 hours
- We provide support in Chinese, English, French, German, Japanese and Spanish
- Extensive multi-media technical resources to help you
- We investigate all quality concerns to ensure our products perform to the highest standards

If the product does not perform as described on this datasheet, we will offer a refund or replacement. For full details of the Abpromise, please visit <https://www.abcam.com/abpromise> or contact our technical team.

Terms and conditions

- Guarantee only valid for products bought direct from Abcam or one of our authorized distributors