


## Product datasheet

# Anti-Calmodulin 1/2/3 antibody ab155550

[1 References](#) [2 Images](#)

### Overview

---

<b>Product name</b>	Anti-Calmodulin 1/2/3 antibody
<b>Description</b>	Rabbit polyclonal to Calmodulin 1/2/3
<b>Host species</b>	Rabbit
<b>Tested applications</b>	<b>Suitable for:</b> WB, ICC/IF
<b>Species reactivity</b>	<b>Reacts with:</b> Mouse, Human <b>Predicted to work with:</b> Rat, Rabbit, Xenopus laevis, Xenopus tropicalis 
<b>Immunogen</b>	Recombinant fragment corresponding to Human Calmodulin 1/2/3 aa 1-165.
<b>Positive control</b>	Mouse brain whole cell lysate; HeLa cells.
<b>General notes</b>	<p>The Life Science industry has been in the grips of a reproducibility crisis for a number of years. Abcam is leading the way in addressing this with our range of recombinant monoclonal antibodies and knockout edited cell lines for gold-standard validation. Please check that this product meets your needs before purchasing.</p> <p>If you have any questions, special requirements or concerns, please send us an inquiry and/or contact our Support team ahead of purchase. Recommended alternatives for this product can be found below, along with publications, customer reviews and Q&amp;As</p>

### Properties

---

<b>Form</b>	Liquid
<b>Storage instructions</b>	Shipped at 4°C. Upon delivery aliquot. Store at -20°C or -80°C. Avoid freeze / thaw cycle.
<b>Storage buffer</b>	pH: 7.00 Preservative: 0.01% Thimerosal (merthiolate) Constituents: 79.99% PBS, 20% Glycerol (glycerin, glycerine)
<b>Purity</b>	Immunogen affinity purified
<b>Clonality</b>	Polyclonal
<b>Isotype</b>	IgG

### Applications

---

The **Abpromise guarantee** Our **Abpromise guarantee** covers the use of ab155550 in the following tested applications.

The application notes include recommended starting dilutions; optimal dilutions/concentrations should be determined by the end user.

Application	Abreviews	Notes
WB		1/500 - 1/3000. Predicted molecular weight: 17 kDa.
ICC/IF		1/100 - 1/1000.

## Target

### Relevance

Function: Calmodulin mediates the control of a large number of enzymes and other proteins by Ca(2+). Among the enzymes to be stimulated by the calmodulin-Ca(2+) complex are a number of protein kinases and phosphatases. Together with CEP110 and centrin, is involved in a genetic pathway that regulates the centrosome cycle and progression through cytokinesis.

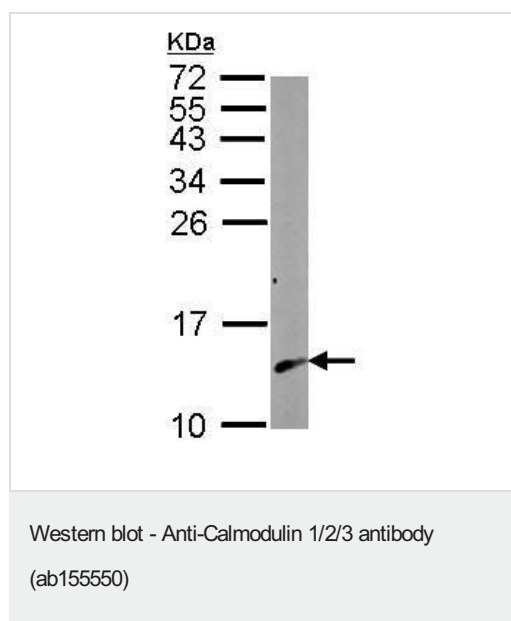
### Cellular localization

Cytoplasm > cytoskeleton > spindle. Cytoplasm > cytoskeleton > spindle pole. Distributed throughout the cell during interphase, but during mitosis becomes dramatically localized to the spindle poles and the spindle microtubules.

### Form

There are three genes which encode an identical calcium binding protein which is one of the four subunits of phosphorylase kinase.

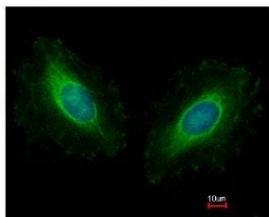
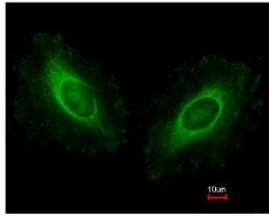
## Images



Anti-Calmodulin 1/2/3 antibody (ab155550) at 1/1000 dilution +  
Mouse brain whole cell lysate at 50 µg

**Predicted band size: 17 kDa**

15% SDS PAGE



Immunofluorescence analysis of methanol-fixed HeLa cells labeling Calmodulin with ab155550 at 1/500 dilution (green). The image in the lower panel is costained with Hoechst 33342 (blue).

Immunocytochemistry/ Immunofluorescence - Anti-Calmodulin 1/2/3 antibody (ab155550)

**Please note:** All products are "FOR RESEARCH USE ONLY. NOT FOR USE IN DIAGNOSTIC PROCEDURES"

### Our Abpromise to you: Quality guaranteed and expert technical support

---

- Replacement or refund for products not performing as stated on the datasheet
- Valid for 12 months from date of delivery
- Response to your inquiry within 24 hours
- We provide support in Chinese, English, French, German, Japanese and Spanish
- Extensive multi-media technical resources to help you
- We investigate all quality concerns to ensure our products perform to the highest standards

If the product does not perform as described on this datasheet, we will offer a refund or replacement. For full details of the Abpromise, please visit <https://www.abcam.com/abpromise> or contact our technical team.

### Terms and conditions

---

- Guarantee only valid for products bought direct from Abcam or one of our authorized distributors