


Product datasheet

Anti-Calmodulin 1/2/3 (phospho T79 + S81) antibody ab61001

[4 References](#) [3 Images](#)

Overview

Product name	Anti-Calmodulin 1/2/3 (phospho T79 + S81) antibody
Description	Rabbit polyclonal to Calmodulin 1/2/3 (phospho T79 + S81)
Host species	Rabbit
Specificity	Detects endogenous levels of Calmodulin only when phosphorylated at threonine 79 and serine 81.
Tested applications	Suitable for: ICC/IF, WB, IHC-P
Species reactivity	Reacts with: Human Predicted to work with: Mouse, Rat 
Immunogen	Synthetic peptide corresponding to Human Calmodulin 1/2/3 (phospho T79 + S81). The antiserum was produced against synthesized phosphopeptide derived from human Calmodulin around the phosphorylation site of threonine 79 and serine 81 (K-D-T(p)-D-S(p)-E-E) Database link: P0DP23
Positive control	IHC-P: human brain tissue. WB: extracts from Jurkat cells.
General notes	<p>The Life Science industry has been in the grips of a reproducibility crisis for a number of years. Abcam is leading the way in addressing this with our range of recombinant monoclonal antibodies and knockout edited cell lines for gold-standard validation. Please check that this product meets your needs before purchasing.</p> <p>If you have any questions, special requirements or concerns, please send us an inquiry and/or contact our Support team ahead of purchase. Recommended alternatives for this product can be found below, along with publications, customer reviews and Q&As</p>

Properties

Form	Liquid
Storage instructions	Shipped at 4°C. Store at +4°C short term (1-2 weeks). Upon delivery aliquot. Store at -20°C long term. Avoid freeze / thaw cycle.
Storage buffer	pH: 7.40 Preservative: 0.02% Sodium azide Constituents: PBS, 50% Glycerol (glycerin, glycerine), 0.87% Sodium chloride

	Without Mg ²⁺ and Ca ²⁺
Purity	Immunogen affinity purified
Purification notes	Affinity purified from rabbit antiserum by affinity-chromatography using epitope-specific phosphopeptide. The antibody against non-phosphopeptide was removed by chromatography using non-phosphopeptide corresponding to the phosphorylation site.
Clonality	Polyclonal
Isotype	IgG

Applications

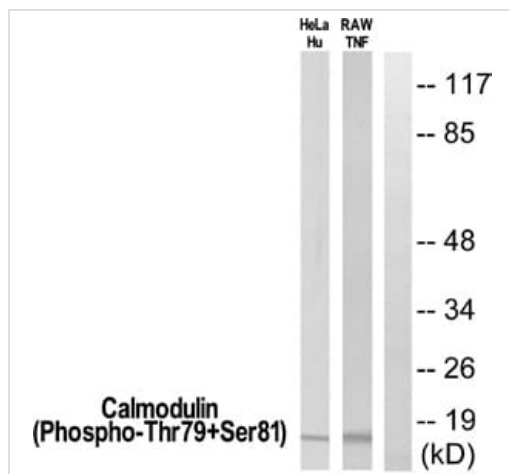
The Abpromise guarantee Our **Abpromise guarantee** covers the use of ab61001 in the following tested applications. The application notes include recommended starting dilutions; optimal dilutions/concentrations should be determined by the end user.

Application	Abreviews	Notes
ICC/IF		1/100 - 1/500.
WB		1/500 - 1/1000. Detects a band of approximately 17 kDa (predicted molecular weight: 17 kDa).
IHC-P		1/50 - 1/100.

Target

Relevance	Function: Calmodulin mediates the control of a large number of enzymes and other proteins by Ca(2+). Among the enzymes to be stimulated by the calmodulin-Ca(2+) complex are a number of protein kinases and phosphatases. Together with CEP110 and centrin, is involved in a genetic pathway that regulates the centrosome cycle and progression through cytokinesis.
Cellular localization	Cytoplasm > cytoskeleton > spindle. Cytoplasm > cytoskeleton > spindle pole. Distributed throughout the cell during interphase, but during mitosis becomes dramatically localized to the spindle poles and the spindle microtubules.
Form	There are three genes which encode an identical calcium binding protein which is one of the four subunits of phosphorylase kinase.

Images



Western blot - Anti-Calmodulin 1/2/3 (phospho T79 + S81) antibody (ab61001)

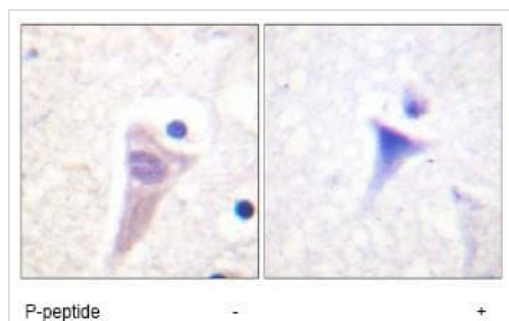
All lanes : Anti-Calmodulin 1/2/3 (phospho T79 + S81) antibody (ab61001) at 1/500 dilution

Lane 1 : HeLa cells treated with Hu (1mg/ml)

Lane 2 : Raw264.7 cells treated with TNFa (1mg/ml)

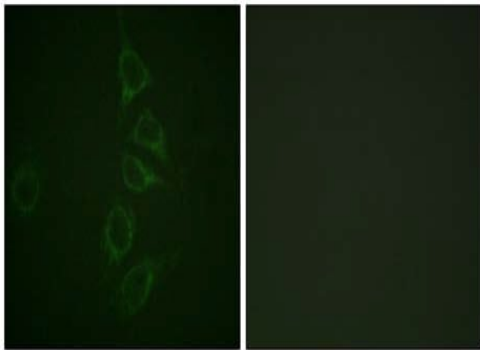
Lysates/proteins at 15 µl per lane.

Predicted band size: 17 kDa



Immunohistochemistry (Formalin/PFA-fixed paraffin-embedded sections) - Anti-Calmodulin 1/2/3 (phospho T79 + S81) antibody (ab61001)

ab61001, at a 1/50 dilution, staining bi-phosphorylated Calmodulin on human brain tissue sections, in the presence (right) or absence (left) of the immunizing phosphopeptide.



Immunofluorescence analysis of HepG2 cells labeling Calmodulin (Phospho-Thr79+Ser81) with ab61001 at 1/100 dilution. The panel on the left is without the blocking peptide, while the panel on the right includes the blocking peptide.

Immunocytochemistry/ Immunofluorescence - Anti-Calmodulin 1/2/3 (phospho T79 + S81) antibody (ab61001)

Please note: All products are "FOR RESEARCH USE ONLY. NOT FOR USE IN DIAGNOSTIC PROCEDURES"

Our Abpromise to you: Quality guaranteed and expert technical support

- Replacement or refund for products not performing as stated on the datasheet
- Valid for 12 months from date of delivery
- Response to your inquiry within 24 hours
- We provide support in Chinese, English, French, German, Japanese and Spanish
- Extensive multi-media technical resources to help you
- We investigate all quality concerns to ensure our products perform to the highest standards

If the product does not perform as described on this datasheet, we will offer a refund or replacement. For full details of the Abpromise, please visit <https://www.abcam.com/abpromise> or contact our technical team.

Terms and conditions

- Guarantee only valid for products bought direct from Abcam or one of our authorized distributors