

Product datasheet

Anti-Calnexin antibody ab13505

[4 References](#) [5 Images](#)

Overview

Product name	Anti-Calnexin antibody
Description	Rabbit polyclonal to Calnexin
Host species	Rabbit
Specificity	Recognizes ER membrane, mitochondria and cis-Golgi
Tested applications	Suitable for: IHC-P, ICC/IF, WB
Species reactivity	Reacts with: Mouse, Rat, Human
Immunogen	Synthetic peptide: TAPPSSPKVTYKAPVPTGE conjugated to KLH, corresponding to amino acids 50-68 of Human Calnexin Run BLAST with Run BLAST with

General notes

The Life Science industry has been in the grips of a reproducibility crisis for a number of years. Abcam is leading the way in addressing this with our range of recombinant monoclonal antibodies and knockout edited cell lines for gold-standard validation. Please check that this product meets your needs before purchasing.

If you have any questions, special requirements or concerns, please send us an inquiry and/or contact our Support team ahead of purchase. Recommended alternatives for this product can be found below, along with publications, customer reviews and Q&As

Properties

Form	Liquid
Storage instructions	Shipped at 4°C. Store at +4°C short term (1-2 weeks). Upon delivery aliquot. Store at -20°C or -80°C. Avoid freeze / thaw cycle.
Storage buffer	Constituent: Whole serum
Purity	Whole antiserum
Clonality	Polyclonal
Isotype	IgG

Applications

The Abpromise guarantee

Our **Abpromise guarantee** covers the use of ab13505 in the following tested applications.

The application notes include recommended starting dilutions; optimal dilutions/concentrations should be determined by the end user.

Application	Abreviews	Notes
IHC-P		1/100.
ICC/IF		1/100.
WB		1/5000. Detects a band of approximately 90 kDa (predicted molecular weight: 90 kDa).

Target

Function

Calcium-binding protein that interacts with newly synthesized glycoproteins in the endoplasmic reticulum. It may act in assisting protein assembly and/or in the retention within the ER of unassembled protein subunits. It seems to play a major role in the quality control apparatus of the ER by the retention of incorrectly folded proteins.

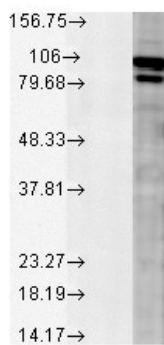
Sequence similarities

Belongs to the calreticulin family.

Cellular localization

Endoplasmic reticulum membrane. Melanosome. Identified by mass spectrometry in melanosome fractions from stage I to stage IV.

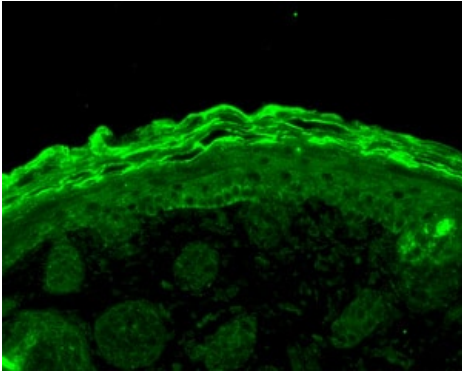
Images



Anti-Calnexin antibody (ab13505) at 1/1000 dilution + Mixture of tissue lysates prepared from Rat tissues.

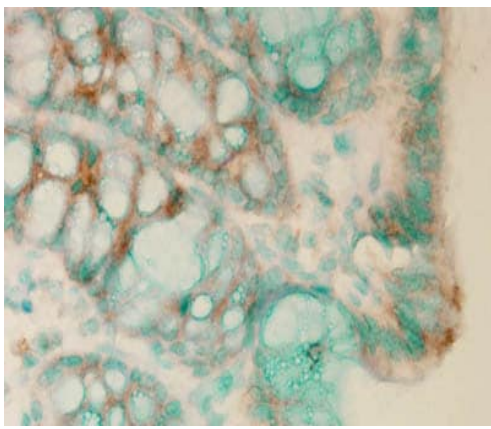
Predicted band size: 90 kDa

Western blot - Anti-Calnexin antibody (ab13505)



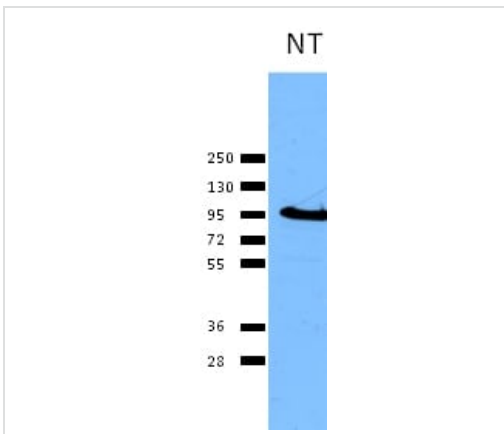
Immunohistochemistry (Formalin/PFA-fixed paraffin-embedded sections) - Anti-Calnexin antibody (ab13505)

ab13505 staining Calnexin - ER membrane marker in mouse back skin tissue section by Immunohistochemistry (Bouin's fixed paraffin embedded tissue sections). Tissue underwent heat mediated antigen retrieval in microwave with two, 5 minutes incubation intervals in citrate buffer. The primary antibody was used at 1/100 dilution and a Fluorophore conjugated goat anti rabbit secondary at 1/50 dilution.



Immunohistochemistry (Formalin/PFA-fixed paraffin-embedded sections) - Anti-Calnexin antibody (ab13505)

ab13505 staining Calnexin - ER membrane marker in mouse colitis colon tissue section by immunohistochemistry (Bouin's fixed paraffin embedded tissue sections). Tissue underwent heat mediated antigen retrieval in microwave with two, 5 minutes incubation intervals in citrate buffer. An antibody amplifier™ was used for staining. A HRP-conjugated anti rabbit was used at 1/10 dilution as secondary.



Western blot - Anti-Calnexin antibody (ab13505)

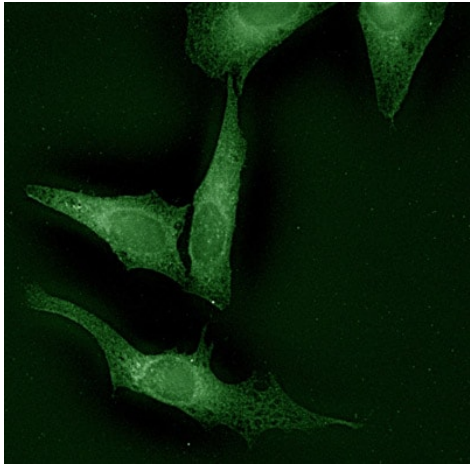
Anti-Calnexin antibody (ab13505) at 1/2000 dilution ((in TBS with 0.05% TW-20)) + HeLa cell lysate

Secondary

An HRP-conjugated goat anti-rabbit IgG

Developed using the ECL technique.

Predicted band size: 90 kDa



Immunocytochemistry/ Immunofluorescence - Anti-Calnexin antibody (ab13505)

ab13505 staining Calnexin in HeLa cells by ICC/IF (Immunocytochemistry/immunofluorescence). Cells were fixed with 4% PFA for 20 minutes at room temperature. Samples were incubated with primary antibody (1/100) for 1 hour at room temperature. A Fluorescein-conjugated goat anti-rabbit IgG secondary antibody was used.

Please note: All products are "FOR RESEARCH USE ONLY. NOT FOR USE IN DIAGNOSTIC PROCEDURES"

Our Abpromise to you: Quality guaranteed and expert technical support

- Replacement or refund for products not performing as stated on the datasheet
- Valid for 12 months from date of delivery
- Response to your inquiry within 24 hours

- We provide support in Chinese, English, French, German, Japanese and Spanish
- Extensive multi-media technical resources to help you
- We investigate all quality concerns to ensure our products perform to the highest standards

If the product does not perform as described on this datasheet, we will offer a refund or replacement. For full details of the Abpromise, please visit <https://www.abcam.com/abpromise> or contact our technical team.

Terms and conditions

- Guarantee only valid for products bought direct from Abcam or one of our authorized distributors