

Product datasheet

Anti-Calpain 1 antibody ab28258

★★★★★ [6 Abreviews](#) [24 References](#) [1 Image](#)

Overview

Product name	Anti-Calpain 1 antibody
Description	Rabbit polyclonal to Calpain 1
Host species	Rabbit
Specificity	ab28258 recognizes Domain I of the large subunit of Calpain 1. The antibody does not recognize amino-processed Calpain 1, and can be used to discriminate between latent and amino-processed forms. Also ab28258 does not recognize the other calpain family members (M calpain, calpain 94, ncl 2, ncl 3, etc.).
Tested applications	Suitable for: WB
Species reactivity	Reacts with: Recombinant fragment
Immunogen	Synthetic peptide corresponding to Human Calpain 1. (Peptide available as ab41299)
General notes	<p>The Life Science industry has been in the grips of a reproducibility crisis for a number of years. Abcam is leading the way in addressing this with our range of recombinant monoclonal antibodies and knockout edited cell lines for gold-standard validation. Please check that this product meets your needs before purchasing.</p> <p>If you have any questions, special requirements or concerns, please send us an inquiry and/or contact our Support team ahead of purchase. Recommended alternatives for this product can be found below, along with publications, customer reviews and Q&As</p>

Properties

Form	Liquid
Storage instructions	Shipped at 4°C. Store at +4°C short term (1-2 weeks). Upon delivery aliquot. Store at -20°C long term.
Storage buffer	Constituents: PBS, 50% Glycerol
Purity	Immunogen affinity purified
Purification notes	The antibody has been peptide-affinity purified.
Clonality	Polyclonal
Isotype	IgG

Applications

The Abpromise guarantee

Our **Abpromise guarantee** covers the use of ab28258 in the following tested applications.

The application notes include recommended starting dilutions; optimal dilutions/concentrations should be determined by the end user.

Application	Abreviews	Notes
WB	★★★★★ (3)	1/1000 - 1/5000. Predicted molecular weight: 82 kDa. 1/1000, when using colorimetric substrates such as BCIP/NBT - 1/5000, when using chemiluminescent substrates. But note that when used against the reduced protein, ab28258 identifies bands at 80 kDa, 68 kDa, and a series of further cleaved forms. Dilution optimised using Chromogenic detection.

Target

Function

Calcium-regulated non-lysosomal thiol-protease which catalyze limited proteolysis of substrates involved in cytoskeletal remodeling and signal transduction.

Tissue specificity

Ubiquitous.

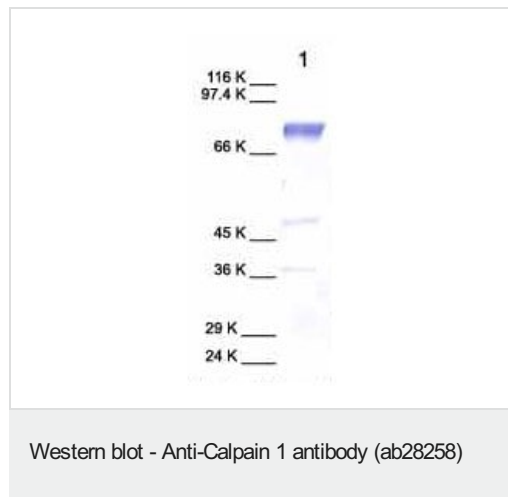
Sequence similarities

Belongs to the peptidase C2 family.
Contains 1 calpain catalytic domain.
Contains 4 EF-hand domains.

Cellular localization

Cytoplasm. Cell membrane. Translocates to the plasma membrane upon Ca(2+) binding.

Images



Anti-Calpain 1 antibody (ab28258) at 1/1000 dilution + Calpain 1 at 10 µg

Predicted band size: 82 kDa

Observed band size: 80 kDa

Please note: All products are "FOR RESEARCH USE ONLY. NOT FOR USE IN DIAGNOSTIC PROCEDURES"

Our Abpromise to you: Quality guaranteed and expert technical support

- Replacement or refund for products not performing as stated on the datasheet
- Valid for 12 months from date of delivery

- Response to your inquiry within 24 hours
- We provide support in Chinese, English, French, German, Japanese and Spanish
- Extensive multi-media technical resources to help you
- We investigate all quality concerns to ensure our products perform to the highest standards

If the product does not perform as described on this datasheet, we will offer a refund or replacement. For full details of the Abpromise, please visit <https://www.abcam.com/abpromise> or contact our technical team.

Terms and conditions

- Guarantee only valid for products bought direct from Abcam or one of our authorized distributors