

## Product datasheet

# Anti-Calpain 5 antibody ab28280

[3 References](#) [1 Image](#)

### Overview

---

<b>Product name</b>	Anti-Calpain 5 antibody
<b>Description</b>	Rabbit polyclonal to Calpain 5
<b>Host species</b>	Rabbit
<b>Specificity</b>	Does not cross react with the other calpain family members (Calpain 1, Calpain 2, Calpain 3, ncl 3, etc.).
<b>Tested applications</b>	<b>Suitable for:</b> ICC/IF
<b>Species reactivity</b>	<b>Reacts with:</b> Human
<b>Immunogen</b>	Synthetic peptide corresponding to Human Calpain 5 aa 1-30 (N terminal). (Peptide available as <a href="#">ab41310</a> )
<b>General notes</b>	Diluted antibody can be reused several times if not contaminated; store at 4°C with 0.05% Sodium Azide as preservative.

ab28280 does not recognize amino-processed Calpain 5, and can be used to discriminate between latent and amino-processed forms. ab28280 will also bind to the non-reduced protein, and thus may have application for immunoprecipitation, immunohistochemistry, and ELISA.

The Life Science industry has been in the grips of a reproducibility crisis for a number of years. Abcam is leading the way in addressing this with our range of recombinant monoclonal antibodies and knockout edited cell lines for gold-standard validation. Please check that this product meets your needs before purchasing.

If you have any questions, special requirements or concerns, please send us an inquiry and/or contact our Support team ahead of purchase. Recommended alternatives for this product can be found below, along with publications, customer reviews and Q&As

### Properties

---

<b>Form</b>	Liquid
<b>Storage instructions</b>	Shipped at 4°C. Store at +4°C short term (1-2 weeks). Upon delivery aliquot. Store at -20°C or -80°C. Avoid freeze / thaw cycle.
<b>Storage buffer</b>	Preservative: 0.05% Sodium azide Constituent: 50% Glycerol
<b>Purity</b>	Immunogen affinity purified

<b>Purification notes</b>	The antibody has been peptide-affinity purified.
<b>Primary antibody notes</b>	ab28280 does not recognize amino-processed Calpain 5, and can be used to discriminate between latent and amino-processed forms. ab28280 will also bind to the non-reduced protein, and thus may have application for immunoprecipitation, immunohistochemistry, and ELISA.
<b>Clonality</b>	Polyclonal
<b>Isotype</b>	IgG

## Applications

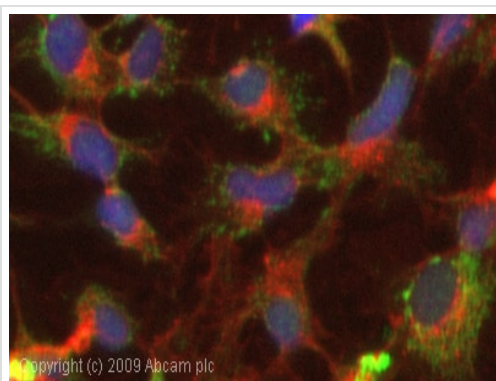
**The Abpromise guarantee** Our **Abpromise guarantee** covers the use of ab28280 in the following tested applications. The application notes include recommended starting dilutions; optimal dilutions/concentrations should be determined by the end user.

Application	Abreviews	Notes
ICC/IF		Use a concentration of 1 - 5 µg/ml.

## Target

<b>Tissue specificity</b>	Expressed in many tissues. Strong expression in the photoreceptor cells of the retina, with a punctate pattern of labeling over the nuclei and inner segments with less expression along the other segments and outer plexiform layer.
<b>Involvement in disease</b>	Vitreoretinopathy, neovascular inflammatory
<b>Sequence similarities</b>	Belongs to the peptidase C2 family. Contains 1 C2 domain. Contains 1 calpain catalytic domain.

## Images



Immunocytochemistry/ Immunofluorescence - Anti-Calpain 5 antibody (ab28280)

ICC/IF image of ab28280 stained HepG2 cells. The cells were 100% methanol fixed (5 min) and then incubated in 1%BSA / 10% normal goat serum / 0.3M glycine in 0.1% PBS-Tween for 1h to permeabilise the cells and block non-specific protein-protein interactions. The cells were then incubated with the antibody (ab28280, 1µg/ml) overnight at +4°C. The secondary antibody (green) was Alexa Fluor® 488 goat anti-rabbit IgG (H+L) used at a 1/1000 dilution for 1h. Alexa Fluor® 594 WGA was used to label plasma membranes (red) at a 1/200 dilution for 1h. DAPI was used to stain the cell nuclei (blue) at a concentration of 1.43µM.

**Please note:** All products are "FOR RESEARCH USE ONLY. NOT FOR USE IN DIAGNOSTIC PROCEDURES"

## **Our Abpromise to you: Quality guaranteed and expert technical support**

---

- Replacement or refund for products not performing as stated on the datasheet
- Valid for 12 months from date of delivery
- Response to your inquiry within 24 hours
  
- We provide support in Chinese, English, French, German, Japanese and Spanish
- Extensive multi-media technical resources to help you
- We investigate all quality concerns to ensure our products perform to the highest standards

If the product does not perform as described on this datasheet, we will offer a refund or replacement. For full details of the Abpromise, please visit <https://www.abcam.com/abpromise> or contact our technical team.

## **Terms and conditions**

---

- Guarantee only valid for products bought direct from Abcam or one of our authorized distributors