

Product datasheet

Anti-Calpain 6 antibody ab76974

[2 References](#) [1 Image](#)

Overview

Product name	Anti-Calpain 6 antibody
Description	Rabbit polyclonal to Calpain 6
Host species	Rabbit
Tested applications	Suitable for: WB
Species reactivity	Reacts with: Rat
Immunogen	An 18 amino acid peptide from near the carboxy terminus of human Calpain 6.
Positive control	WB: Rat lung tissue lysate.
General notes	<p>The Life Science industry has been in the grips of a reproducibility crisis for a number of years. Abcam is leading the way in addressing this with our range of recombinant monoclonal antibodies and knockout edited cell lines for gold-standard validation. Please check that this product meets your needs before purchasing.</p> <p>If you have any questions, special requirements or concerns, please send us an inquiry and/or contact our Support team ahead of purchase. Recommended alternatives for this product can be found below, along with publications, customer reviews and Q&As</p>

Properties

Form	Liquid
Storage instructions	Shipped at 4°C. Upon delivery aliquot and store at -20°C or -80°C. Avoid repeated freeze / thaw cycles.
Storage buffer	<p>pH: 7.2</p> <p>Preservative: 0.02% Sodium azide</p> <p>Constituent: PBS</p>
Purity	Protein A purified
Clonality	Polyclonal
Isotype	IgG

Applications

The Abpromise guarantee Our **Abpromise guarantee** covers the use of ab76974 in the following tested applications.

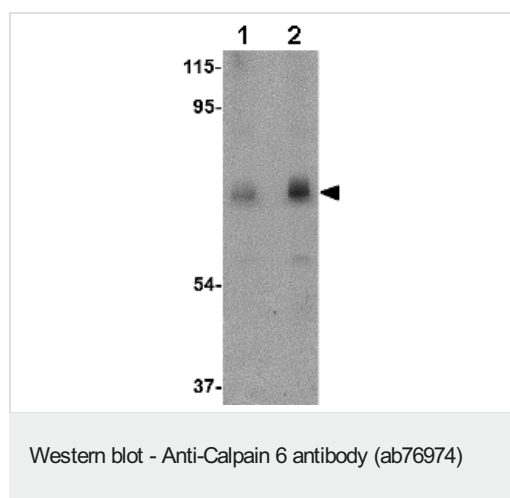
The application notes include recommended starting dilutions; optimal dilutions/concentrations should be determined by the end user.

Application	Abreviews	Notes
WB		Use a concentration of 0.5 - 1 µg/ml. Predicted molecular weight: 75 kDa.

Target

Function	Microtubule-stabilizing protein that may be involved in the regulation of microtubule dynamics and cytoskeletal organization. May act as a regulator of RAC1 activity through interaction with ARHGEF2 to control lamellipodial formation and cell mobility. Does not seem to have protease activity as it has lost the active site residues.
Tissue specificity	Expressed only in placenta.
Sequence similarities	Belongs to the peptidase C2 family. Contains 1 C2 domain. Contains 1 calpain catalytic domain.
Cellular localization	Cytoplasm > perinuclear region. Cytoplasm > cytoskeleton > spindle. During mitose associated with the mitotic spindle. At telophase colocalized to the midbody spindle.

Images



Lane 1 : Anti-Calpain 6 antibody (ab76974) at 0.5 µg/ml

Lane 2 : Anti-Calpain 6 antibody (ab76974) at 1 µg/ml

All lanes : rat lung tissue lysate

Predicted band size: 75 kDa

Observed band size: 75 kDa

Please note: All products are "FOR RESEARCH USE ONLY. NOT FOR USE IN DIAGNOSTIC PROCEDURES"

Our Abpromise to you: Quality guaranteed and expert technical support

- Replacement or refund for products not performing as stated on the datasheet
- Valid for 12 months from date of delivery
- Response to your inquiry within 24 hours
- We provide support in Chinese, English, French, German, Japanese and Spanish
- Extensive multi-media technical resources to help you

- We investigate all quality concerns to ensure our products perform to the highest standards

If the product does not perform as described on this datasheet, we will offer a refund or replacement. For full details of the Abpromise, please visit <https://www.abcam.com/abpromise> or contact our technical team.

Terms and conditions

- Guarantee only valid for products bought direct from Abcam or one of our authorized distributors