

## Product datasheet

### Anti-Calpastatin antibody [SP82] ab101684

Recombinant **RabMAb**

6 Images

#### Overview

<b>Product name</b>	Anti-Calpastatin antibody [SP82]
<b>Description</b>	Rabbit monoclonal [SP82] to Calpastatin
<b>Host species</b>	Rabbit
<b>Tested applications</b>	<b>Suitable for:</b> ICC/IF, IHC-P, Flow Cyt (Intra)
<b>Species reactivity</b>	<b>Reacts with:</b> Human
<b>Immunogen</b>	Synthetic peptide within Human Calpastatin aa 550-650 (C terminal). The exact sequence is proprietary. Database link: <a href="#">P20810</a>
<b>Positive control</b>	IHC-P: Human breast carcinoma tissue; Flow Cyt (Intra): HaCaT and HeLa cells; ICC/IF: HaCaT cells.
<b>General notes</b>	<b>This product is FOR RESEARCH USE ONLY. For commercial use, please contact <a href="mailto:partnerships@abcam.com">partnerships@abcam.com</a>.</b>

#### Properties

<b>Form</b>	Liquid
<b>Storage instructions</b>	Shipped at 4°C. Store at +4°C. Do Not Freeze.
<b>Storage buffer</b>	pH: 7.60 Preservative: 0.1% Sodium azide Constituents: PBS, 1% BSA
<b>Purity</b>	Protein A/G purified
<b>Purification notes</b>	Purified from TCS by protein A/G.
<b>Clonality</b>	Monoclonal
<b>Clone number</b>	SP82
<b>Isotype</b>	IgG

#### Applications

## The Abpromise guarantee

Our **Abpromise guarantee** covers the use of ab101684 in the following tested applications.

The application notes include recommended starting dilutions; optimal dilutions/concentrations should be determined by the end user.

Application	Abreviews	Notes
ICC/IF		Use at an assay dependent concentration.
IHC-P		1/100. Incubate for 30 minutes at RT. Antigen retrieval is recommended: boil tissue section in 10mM citrate buffer, pH 6.0 for 10 min followed by cooling at RT for 20 min.
Flow Cyt (Intra)		Use at an assay dependent concentration. <b>ab172730</b> - Rabbit monoclonal IgG, is suitable for use as an isotype control with this antibody.

## Target

### Function

Specific inhibition of calpain (calcium-dependent cysteine protease). Plays a key role in postmortem tenderization of meat and have been proposed to be involved in muscle protein degradation in living tissue.

### Sequence similarities

Belongs to the protease inhibitor I27 (calpastatin) family.

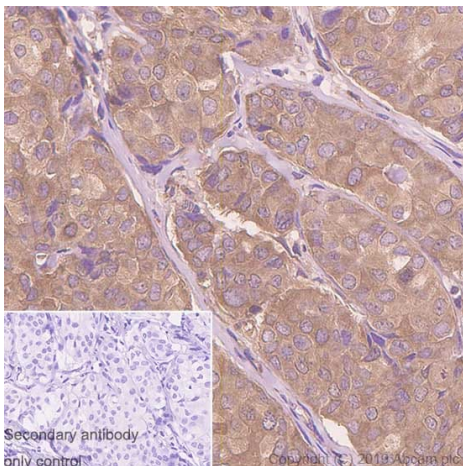
### Domain

Has four inhibitory domains.

### Post-translational modifications

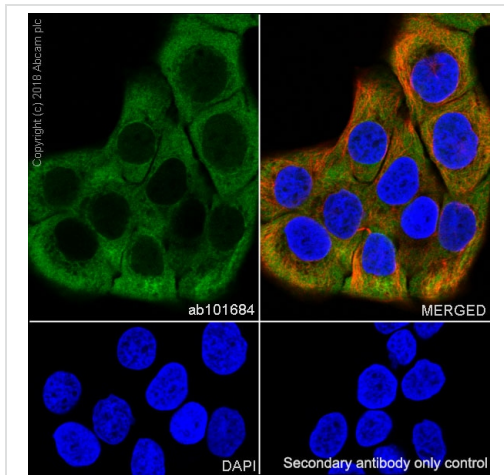
The N-terminus is blocked.

## Images



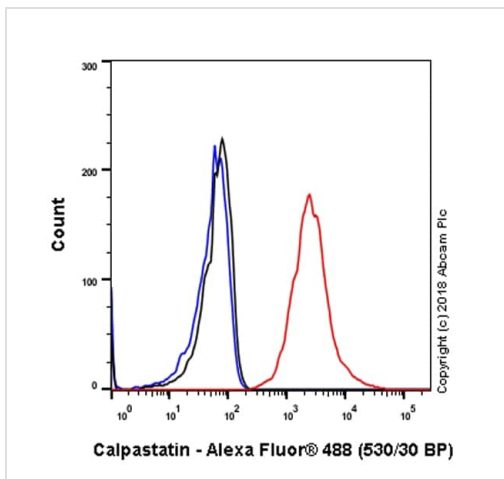
Immunohistochemistry (Formalin/PFA-fixed paraffin-embedded sections) analysis of Human breast carcinoma tissue sections labeling Calpastatin with Purified ab101684 at 1/100 dilution (0.59 µg/ml). Heat mediated antigen retrieval was performed Heat mediated antigen retrieval with Citrate buffer (pH 6.0, epitope retrieval solution 1) for 20mins. Rabbit specific IHC polymer detection kit HRP/DAB (**ab209101**) was used as the secondary antibody. Negative control: PBS instead of the primary antibody. Hematoxylin was used as a counterstain.

Immunohistochemistry (Formalin/PFA-fixed paraffin-embedded sections) - Anti-Calpastatin antibody [SP82] (ab101684)



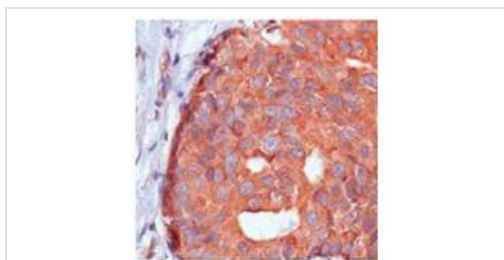
Immunocytochemistry/ Immunofluorescence - Anti-Calpastatin antibody [SP82] (ab101684)

Immunocytochemistry/ Immunofluorescence analysis of HaCaT (human skin keratinocyte) cells labeling Calpastatin with purified ab101684. Cells were fixed in 4% paraformaldehyde and permeabilized with 0.1% Triton X-100. Cells were counterstained with **ab195889** Anti-alpha Tubulin antibody [DM1A] - Microtubule Marker (Alexa Fluor® 594). Goat anti rabbit IgG (Alexa Fluor® 488, **ab150077**) was used as the secondary antibody. DAPI was used as nuclear counterstain. PBS instead of the primary antibody was used as the secondary antibody only control.



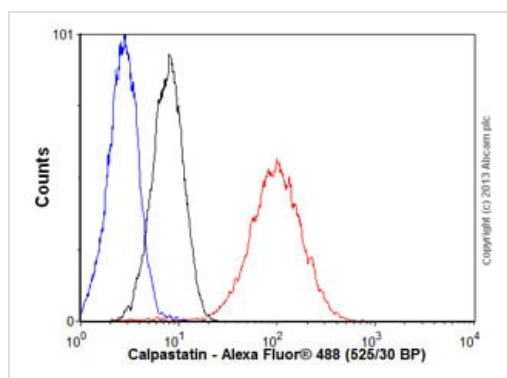
Flow Cytometry (Intracellular) - Anti-Calpastatin antibody [SP82] (ab101684)

Flow cytometry analysis of HaCaT (human skin keratinocyte) labeling Calpastatin with purified ab101684 (red). Cells were fixed with 4% paraformaldehyde and permeabilised with 90% methanol. Goat anti rabbit IgG (Alexa Fluor® 488, **ab150077**) was used as a secondary antibody. Isotype control - Rabbit monoclonal IgG (**ab172730**) (black). Unlabeled control - Unlabelled cells (blue).



Immunohistochemistry (Formalin/PFA-fixed paraffin-embedded sections) - Anti-Calpastatin antibody [SP82] (ab101684)





Immunohistochemical analysis of Calpastatin in formalin-fixed, paraffin-embedded Human breast carcinoma using ab101684 at 1/200 dilution.



Flow Cytometry (Intracellular) - Anti-Calpastatin antibody [SP82] (ab101684)

Overlay histogram showing HeLa cells stained with ab101684 (red line). The cells were fixed with 80% methanol (5 min) and then permeabilized with 0.1% PBS-Tween for 20 min. The cells were then incubated in 1x PBS / 10% normal goat serum / 0.3M glycine to block non-specific protein-protein interactions followed by the antibody (ab101684) for 30 min at 22°C. The secondary antibody used was Alexa Fluor® 488 goat anti-rabbit IgG (H&L) ([ab150077](#)) for 30 min at 22°C. Isotype control antibody (black line) was rabbit IgG (monoclonal) (1 µg/1x10<sup>6</sup> cells) used under the same conditions. Unlabelled sample (blue line) was also used as a control. Acquisition of >5,000 events were collected using a 20mW Argon ion laser (488nm) and 525/30 bandpass filter.

Why choose a recombinant antibody?

 <p><b>Research with confidence</b> Consistent and reproducible results</p>	 <p><b>Long-term and scalable supply</b> Recombinant technology</p>
 <p><b>Success from the first experiment</b> Confirmed specificity</p>	 <p><b>Ethical standards compliant</b> Animal-free production</p>

Anti-Calpastatin antibody [SP82] (ab101684)

**Please note:** All products are "FOR RESEARCH USE ONLY. NOT FOR USE IN DIAGNOSTIC PROCEDURES"

### Our Abpromise to you: Quality guaranteed and expert technical support

- Replacement or refund for products not performing as stated on the datasheet
- Valid for 12 months from date of delivery
- Response to your inquiry within 24 hours
- We provide support in Chinese, English, French, German, Japanese and Spanish
- Extensive multi-media technical resources to help you
- We investigate all quality concerns to ensure our products perform to the highest standards

If the product does not perform as described on this datasheet, we will offer a refund or replacement. For full details of the Abpromise, please visit <https://www.abcam.com/abpromise> or contact our technical team.

## **Terms and conditions**

---

- Guarantee only valid for products bought direct from Abcam or one of our authorized distributors