


Product datasheet

Anti-CaMKII (phospho T286) antibody ab32678

★★★★★ [28 Abreviews](#) [76 References](#) [1 Image](#)

Overview

Product name	Anti-CaMKII (phospho T286) antibody
Description	Rabbit polyclonal to CaMKII (phospho T286)
Host species	Rabbit
Specificity	This antibody is specific for the ~50 kDa alpha CaM Kinase II subunit and the ~60 kDa beta CaM Kinase II subunit phosphorylated at Thr286 in Western blots. Immunolabeling is blocked by the phosphopeptide used as the antigen but not by the corresponding dephosphopeptide.
Tested applications	Suitable for: WB
Species reactivity	Reacts with: Rat Predicted to work with: Chicken, Cow 
Immunogen	Synthetic peptide corresponding to Rat CaMKII (phospho T286).
Positive control	WB: Rat cortex lysate
General notes	<p>The Life Science industry has been in the grips of a reproducibility crisis for a number of years. Abcam is leading the way in addressing this with our range of recombinant monoclonal antibodies and knockout edited cell lines for gold-standard validation. Please check that this product meets your needs before purchasing.</p> <p>If you have any questions, special requirements or concerns, please send us an inquiry and/or contact our Support team ahead of purchase. Recommended alternatives for this product can be found below, along with publications, customer reviews and Q&As</p>

Properties

Form	Liquid
Storage instructions	Shipped at 4°C. Upon delivery aliquot and store at -20°C. Avoid freeze / thaw cycles.
Storage buffer	pH: 7.50 Constituents: 0.238% HEPES, 50% Glycerol, 0.87% Sodium chloride, 0.01% BSA
Purity	Immunogen affinity purified
Clonality	Polyclonal
Isotype	IgG

Applications

Applications

The Abpromise guarantee Our **Abpromise guarantee** covers the use of ab32678 in the following tested applications.

The application notes include recommended starting dilutions; optimal dilutions/concentrations should be determined by the end user.

Application	Abreviews	Notes
WB	★★★★★ (18)	1/1000. Predicted molecular weight: 50 kDa. Predicted molecular weight: ~50 kDa for the alpha subunit and ~60 kDa for the beta subunit of CaMKII.

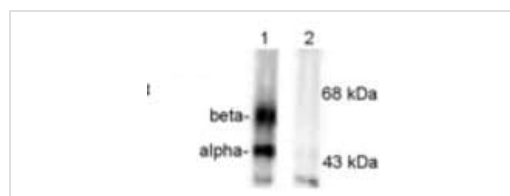
Target

Function CaM-kinase II (CAMK2) is a prominent kinase in the central nervous system that may function in long-term potentiation and neurotransmitter release. Member of the NMDAR signaling complex in excitatory synapses it may regulate NMDAR-dependent potentiation of the AMPAR and synaptic plasticity.

Sequence similarities Belongs to the protein kinase superfamily. CAMK Ser/Thr protein kinase family. CaMK subfamily. Contains 1 protein kinase domain.

Cellular localization Cell junction > synapse > presynaptic cell membrane. Cell junction > synapse. Postsynaptic lipid rafts.

Images



Western blot - Anti-CaMKII (phospho T286) antibody (ab32678)

All lanes : Anti-CaMKII (phospho T286) antibody (ab32678) at 1/1000 dilution

Lane 1 : Rat brain cortex lysate.

Lane 2 : Rat brain cortex lysate preincubated with lambda-phosphatase.

Lysates/proteins at 50 µg per lane.

Predicted band size: 50 kDa

Observed band size: 50,60 kDa

Predicted molecular weight: ~50 kDa for the alpha subunit and ~60 kDa for the beta subunit of CaMKII.

These images show the phosphospecificity of this antibody.

Please note: All products are "FOR RESEARCH USE ONLY. NOT FOR USE IN DIAGNOSTIC PROCEDURES"

Our Abpromise to you: Quality guaranteed and expert technical support

- Replacement or refund for products not performing as stated on the datasheet
- Valid for 12 months from date of delivery
- Response to your inquiry within 24 hours

- We provide support in Chinese, English, French, German, Japanese and Spanish
- Extensive multi-media technical resources to help you
- We investigate all quality concerns to ensure our products perform to the highest standards

If the product does not perform as described on this datasheet, we will offer a refund or replacement. For full details of the Abpromise, please visit <https://www.abcam.com/abpromise> or contact our technical team.

Terms and conditions

- Guarantee only valid for products bought direct from Abcam or one of our authorized distributors